



20ft Size Expandable Container House with Steel Frame Structure and 15+ Year Lifespan

Our Product Introduction

for more products please visit us on prefabricated-containerhouses.com

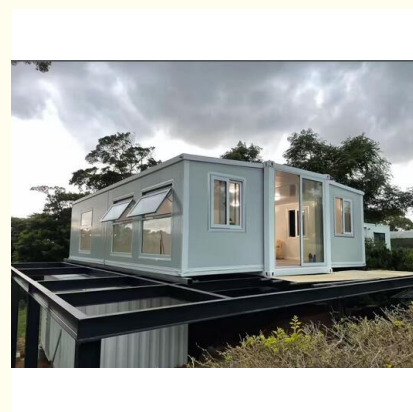
Basic Information

- Place of Origin: china
- Brand Name: INFINITE STARS
- Certification: CE,ISO9001,ISO45001,ISO14001
- Model Number: INFINITE STARS E01
- Minimum Order Quantity: 7 Sets
- Delivery Time: 5-8 work days
- Payment Terms: L/C,D/A,D/P,T/T,Western Union
- Supply Ability: 2000 Sets PER Month

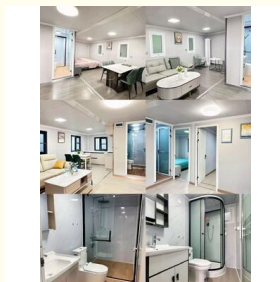
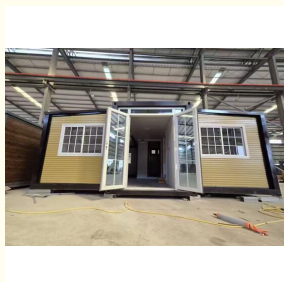
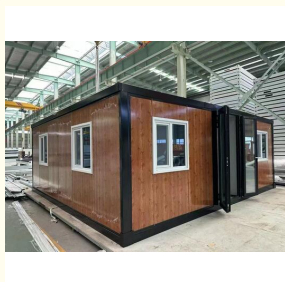


Product Specification

- Name: Expandable Container House
- Standard: AISI, ASTM, BS, DIN, GB, JIS
- Structure: Q235B, Q345B Or Other Requested
- Floor: 15mm Fiber Cement Board
- Window: W1130*H1100mm With Main And Subframe
- Window Of Bathroom: W400*H600mm Without Screen
- Door: W1520*H2200mm Aluminum Sliding Door
- Wall Panel: 50mm EPS/Mineral Wool/Glass Wool Sandwich Panel
- Application: Office/Hotel/Resort/School/Living House/Store/Shop/Stadium/Shopping Mall/Warehouse/Workshop/Hospital/Plant
- Tolerance: $\pm 1\%$
- Processing Service: BENDING, WELDING, Decoiling, Cutting, PUNCHING
- Type: Moneybox Expandable Container House



More Images



Product Description

Transform your approach to flexible and rapid construction with our 20ft Luxury Modular Expandable Container.

This product redefines the concept of prefabricated building expansion boxes, offering a sophisticated, ready-to-deploy unit that combines luxury with unparalleled functionality. Engineered for versatility, it serves as an ideal solution for residential, commercial, hospitality, and emergency housing needs, providing a seamless blend of durability, comfort, and style.

Product Features & Advantages

Our modular container stands out as a premium prefabricated building component, designed for efficiency and elegance. Its core advantages include:

- **Rapid Deployment & Superior Efficiency:** Fully prefabricated in our controlled factory environment, the unit arrives on-site as a finished functional module. This significantly reduces traditional construction timelines by 40-60%, allowing for swift assembly and immediate use through simple connection systems.
- **Uncompromising Quality & Safety:** Manufactured under stringent quality standards, the container ensures high precision and consistency. Built with a robust steel structure, it offers exceptional durability, seismic resistance, and fire safety, while minimizing on-site construction risks.
- **Enhanced Sustainability:** We prioritize eco-friendly practices. The factory production maximizes material utilization, minimizes waste, and reduces site pollution. The unit can be equipped with high-performance insulation and green energy systems, lowering long-term operational costs and environmental impact.
- **Ultimate Flexibility & Luxury:** The modular design allows for easy horizontal or vertical expansion to adapt to changing space requirements. Beyond its structural flexibility, the interior can be customized to luxurious standards, featuring high-end finishes and layouts tailored for comfortable living or premium workspaces. Its portable design also facilitates relocation and reuse.

Key Parameters at a Glance

Feature	Description
Structure & Durability	High-quality steel frame ensuring long-lasting resilience and structural integrity.
Installation	Designed for quick and easy on-site assembly and connection.
Weather Resistance	Engineered to withstand extreme conditions including heavy rain, strong winds, and seismic activity.
Mobility	Portable design for easy transportation to remote or challenging locations.
Customization	Options for exterior cladding, interior layouts, and luxury fittings available.

Frequently Asked Questions (FAQ)

Q: What is a "prefabricated building expansion box"?

A: It refers to a pre-manufactured, self-contained unit—like our modular container—designed to quickly add or expand space for a building. It integrates seamlessly with existing structures or can function as a standalone unit.

Q: How long does installation take?

A: Due to its prefabricated nature, on-site installation is remarkably fast, often completed in a fraction of the time required for conventional construction, depending on the project scope.

Q: Is it suitable for permanent buildings?

A: Absolutely. With its durable steel construction, high-quality finishes, and compliance with stringent building standards, it is perfectly suited for both permanent and temporary applications.

Q: Can the interior be customized?

A: Yes. We offer a range of customization options, from basic layouts to luxury interior designs, allowing you to create a space that meets your specific functional and aesthetic needs.

Q: What are the environmental benefits?

A: The factory-controlled production reduces material waste and site disturbance. The design supports energy-efficient systems, and the structure itself is recyclable, aligning with sustainable construction principles.

As a specialized subsidiary of Wujiang Saima, Suzhou Stars Integrated Housing Co., Ltd. leverages deep expertise and international project experience (including ventures like the 2022 Qatar World Cup) to deliver premium, reliable modular solutions worldwide. Choose innovation, choose luxury, choose expandable efficiency.



Flat Pack Packing



Floor Installation



Roof Installation



Wall Installation



Expandable
House Finessed

Easy installation:4 workers + 10 mins=1 house



Suzhou Stars Integrated Housing Co., Ltd.



+8615228076365



sales@szstarhouse.com



prefabricated-containerhouses.com

NO.1 ZHUJIABANG VILLIAGE.ZHENZE TOWN,WUJANG,SUZHOU,CHINA