



## Expandable Prefab House with Galvanized Steel Frame for Rapid Deployment and Customizable Layout

### Our Product Introduction

for more products please visit us on [prefabricated-containerhouses.com](http://prefabricated-containerhouses.com)

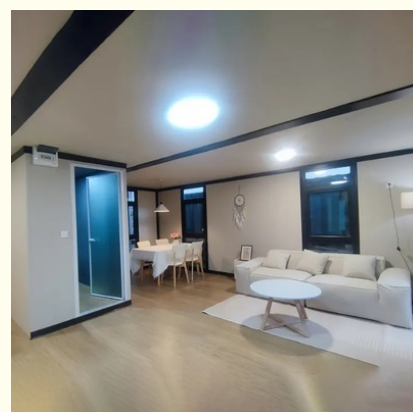
#### Basic Information

- Place of Origin: china
- Brand Name: INFINITE STARS
- Certification: CE,ISO9001,ISO45001,ISO14001
- Minimum Order Quantity: 7 Sets
- Delivery Time: 5-8 work days
- Payment Terms: L/C,D/A,D/P,T/T,Western Union
- Supply Ability: 2000 Sets PER Month

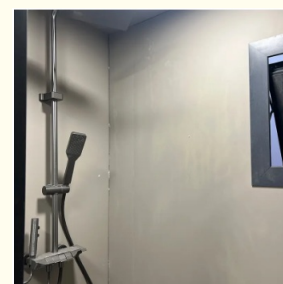
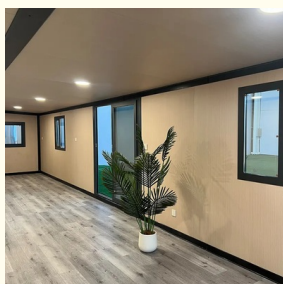
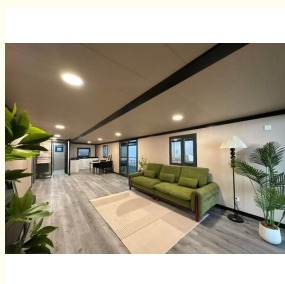


#### Product Specification

- Name: Expandable Container House
- Standard: AISI, ASTM, BS, DIN, GB, JIS
- Structure: Q235B, Q345B Or Other Requested
- Open Size: 6300x5850x2500mm
- Closed Size: 2250x5850x2500mm
- Floor: 15mm Fiber Cement Board
- Window: W1130\*H1100mm With Main And Subframe
- Window Of Bathroom: W400\*H600mm Without Screen
- Door: W1520\*H2200mm Aluminum Sliding Door
- Wall Panel: 50mm EPS/Mineral Wool/Glass Wool Sandwich Panel
- Application: Office/Hotel/Resort/School/Living House/Store/Shop/Stadium/Shopping Mall/Warehouse/Workshop/Hospital/Plant
- Tolerance:  $\pm 1\%$
- Processing Service: Bending, WELDING, Decoiling, Cutting,



#### More Images



## Product Description

Discover the future of flexible and efficient living with our Expandable Prefab House. Designed for speed, durability, and comfort, this versatile housing solution is engineered to meet diverse needs, from residential homes to commercial and remote projects. Its standout feature includes stylish metal carved panels, combining aesthetic appeal with robust construction.

### Product Features & Highlights

Our prefab house redefines modular living with its intelligent fold-out design, enabling rapid deployment. Four workers can complete installation in under 10 minutes without heavy machinery. Available in five adaptable sizes (7x20ft to 19x20ft), each unit is a complete living space featuring a bedroom, modern bathroom with dry/wet separation, and a lounge area.

The construction prioritizes longevity and comfort. It utilizes a high-grade galvanized steel frame with rock wool insulation and composite sandwich panels for superior climate resistance. Windows and doors employ energy-efficient broken-bridge aluminum. Interiors are move-in ready, offering choices between 1 to 4 bedroom layouts, fully fitted kitchens with L-shaped cabinetry, and options for PVC leather or SPC flooring.

### Key Benefits & Advantages

- **Rapid Deployment & Cost Savings:** Dramatically reduce on-site construction time, labor costs, and transportation expenses due to the compact, foldable design.
- **Unmatched Durability:** Built to withstand harsh environments, the galvanized steel structure and insulated panels offer excellent weather resistance, making it ideal for African climates or remote areas.
- **Total Flexibility:** Perfect for a wide range of applications. Use it as a permanent residence, a hospitality unit, agricultural staff housing, a site office, or emergency relief shelter.
- **Customizable Comfort:** Choose from open-plan or multi-bedroom layouts. The modern amenities ensure a convenient and comfortable living experience anywhere.

### Technical Specifications Overview

Category	Specification
Frame & Structure	Fully galvanized steel with electrostatic spray coating
Wall/Roof Panel	75mm EPS sandwich walls; Roof: 0.35mm sheet + 50mm EPS panel
Flooring System	18mm fireproof magnesium glass + PVC/SPC flooring layer
Windows	Main (930x930mm) & bathroom (500x500mm) with broken-bridge aluminum
Bathroom	Fully equipped with shower, toilet, basin; Frosted glass door
Kitchen	Fully fitted L-shaped cabinetry
Electrical	Compliant with CE, AU, US standards; Customizable

### Frequently Asked Questions (FAQ)

#### Q: How quickly can the house be installed?

A: Thanks to the innovative fold-out mechanism, a team of four workers can install the core structure on-site in under 10 minutes.

#### Q: Is this house suitable for extreme climates?

A: Yes. The galvanized steel structure, combined with rock wool/EPS insulation and weather-resistant panels, is engineered to perform reliably in harsh weather conditions.

#### Q: Can the interior layout be customized?

A: Absolutely. We offer flexible layouts ranging from open-plan designs to configurations with up to 4 bedrooms to suit your specific project needs.

#### Q: What are the primary use cases for this expandable house?

A: Its applications are vast, including permanent housing, hotel extensions, farm worker accommodations, construction site offices, and rapid deployment emergency housing.

rapid-deployment emergency housing.

**Q: Are utilities like electrical wiring pre-installed?**

A: Yes, units come with pre-installed electrical systems that meet international standards, with customization options available for specific regional requirements.



**Suzhou Stars Integrated Housing Co., Ltd.**



+8615228076365



sales@szstarhouse.com



prefabricated-containerhouses.com

NO.1 ZHUJIABANG VILLIAGE.ZHENZE TOWN,WUJANG,SUZHOU,CHINA