



## 40ft Size 2-Bedroom Expandable Container Home with Q235B/Q345B Steel Frames for Modern Living

### Our Product Introduction

for more products please visit us on [prefabricated-containerhouses.com](http://prefabricated-containerhouses.com)

#### Basic Information

- Place of Origin: china
- Brand Name: INFINITE STARS
- Certification: CE,ISO9001,ISO45001,ISO14001
- Model Number: INFINITE STARS E01
- Minimum Order Quantity: 7 Sets
- Delivery Time: 5-8 work days
- Payment Terms: L/C,D/A,D/P,T/T,Western Union
- Supply Ability: 2000 Sets PER Month

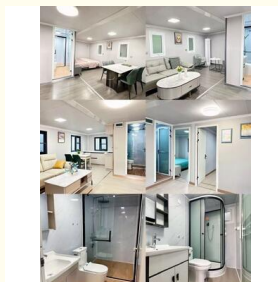
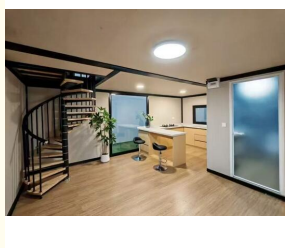


#### Product Specification

- Name: Expandable Container House
- Standard: AISI, ASTM, BS, DIN, GB, JIS
- Structure: Q235B, Q345B Or Other Requested
- Open Size: 6300x5850x2500mm
- Closed Size: 2250x5850x2500mm
- Floor: 15mm Fiber Cement Board
- Window: W1130\*H1100mm With Main And Subframe
- Window Of Bathroom: W400\*H600mm Without Screen
- Door: W1520\*H2200mm Aluminum Sliding Door
- Wall Panel: 50mm EPS/Mineral Wool/Glass Wool Sandwich Panel
- Application: Office/Hotel/Resort/School/Living House/Store/Shop/Stadium/Shopping Mall/Warehouse/Workshop/Hospital/Plant
- Tolerance:  $\pm 1\%$
- Processing Service: Bending, WELDING, Decoiling, Cutting,



#### More Images



## Product Description

Looking for a smart, sustainable, and stylish housing solution? Our 40ft Expandable Container Home redefines modern living by combining industrial strength with contemporary design. Perfect as a primary residence, vacation home, office, or commercial space, it offers unparalleled flexibility, rapid installation, and eco-friendly construction.

### Product Features & Key Advantages

- Innovative Expandable Design:** This house cleverly transforms from a compact, transportable unit (2250mm wide) to a spacious living area (6460mm wide), effectively doubling your space. The expandable modules provide adaptable room for growing families, home offices, or hospitality needs.
- Robust & Sustainable Construction:** Built with a durable steel structure (Q235B/Q345B) and insulated 50mm EPS/Mineral Wool sandwich panels, the home ensures longevity, thermal efficiency, and comfort. We prioritize eco-friendly materials and practices, including options for solar panels.
- Swift Installation & Customization:** Delivered as a complete prefabricated unit, it allows for rapid on-site assembly, minimizing construction time and disruption. We offer extensive customization, letting you tailor floor plans, interior finishes, door types (steel or aluminum alloy), and window configurations to match your personal style and functional requirements.
- Wide-Ranging Applications:** Its versatility suits numerous needs: affordable housing, remote workstations, pop-up retail stores, emergency shelters, resort cabins, and on-site accommodation for construction projects.

### Technical Specifications at a Glance

- Model:** Expandable Container Home (Moneybox Type)
- Expanded Dimensions:** 6460mm (W) x 5850mm (L) x 2530mm (H)
- Transport Dimensions:** 2250mm (W) x 5850mm (L) x 2500mm (H)
- Structure:** Primary Steel Frame
- Wall/Roof Panel:** 50mm EPS/Mineral Wool/Glass Wool Sandwich Panel
- Floor:** 15mm Fibre Cement Board
- Main Door:** Aluminum Sliding Door (W1520 x H2200mm)
- Main Window:** Aluminum Alloy (W1130 x H1100mm)
- Design Standards:** Complies with GB, ASTM, BS, DIN, and other international standards
- Estimated Service Life:** 15+ years

### Frequently Asked Questions (FAQ)

#### Q: How long does installation take?

A: Thanks to its prefabricated modular design, the basic structure can be deployed and installed remarkably quickly, often within days, depending on site conditions and customization level.

#### Q: Is this home suitable for extreme climates?

A: Yes. The standard 50mm insulated sandwich panels provide excellent thermal resistance. For harsh climates, we offer optional upgrades with thicker panels and enhanced insulation materials to ensure year-round comfort.

#### Q: Can I customize the interior layout?

A: Absolutely. While we offer a standard 2-bedroom layout, the interior is highly customizable. You can modify room sizes, add partitions, or choose different finishes for kitchens, bathrooms, and living areas to create your ideal space.

#### Q: What foundation is required?

A: A level, prepared foundation is necessary, such as concrete piers, a slab, or compacted gravel blocks. Our team can provide general foundation guidelines based on your local soil conditions.

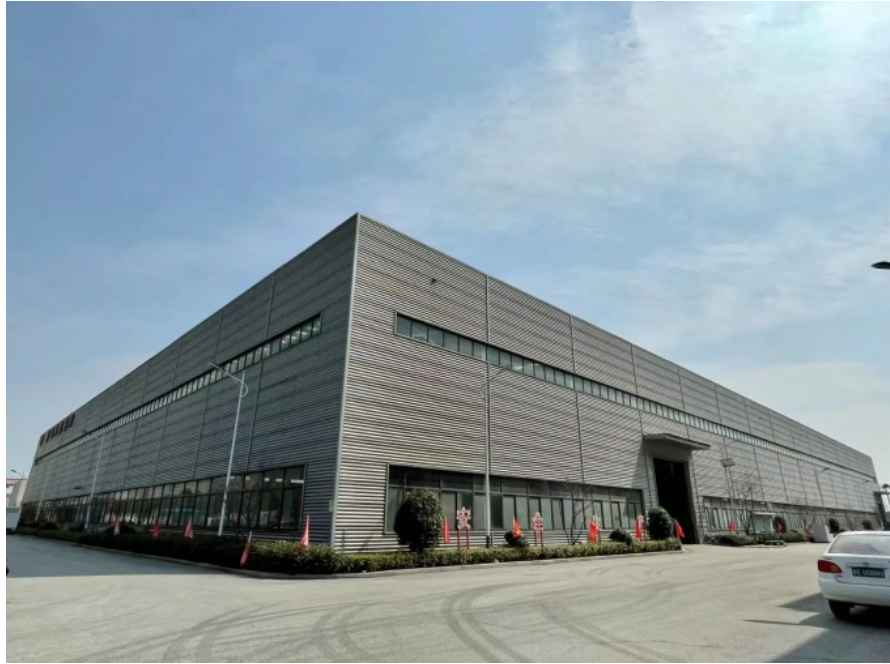
#### Q: Do you ship internationally?

A: Yes, we export worldwide. The unit is packed in a seaworthy, compact package for safe and cost-efficient ocean freight. We handle all necessary documentation for a smooth delivery process.

Embrace efficient and sustainable living with our versatile Expandable Container Home. Designed for durability, comfort, and adaptability, it's the perfect solution for modern living needs.

Embrace efficient and sustainable living with our versatile Expandable Container Home. Designed for durability, comfort, and adaptability, it is the intelligent choice for diverse global housing and commercial challenges.

**Contact us today to discuss your project and receive a customized quote.**



**Suzhou Stars Integrated Housing Co., Ltd.**



+8615228076365



sales@szstarhouse.com



prefabricated-containerhouses.com

NO.1 ZHUJIABANG VILLIAGE.ZHENZE TOWN,WUJANG,SUZHOU,CHINA