



Durable Q235B/Q345B Steel Frames Expandable Container House with 15mm Fiber Cement Floor and 15+ Year Lifespan

Our Product Introduction

for more products please visit us on prefabricated-containerhouses.com

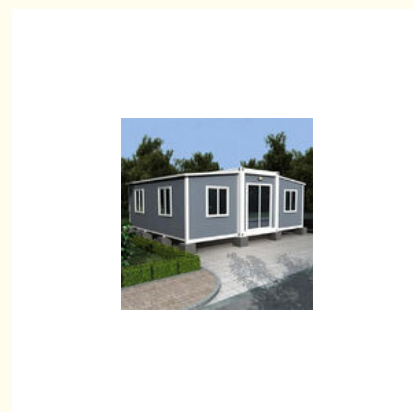
Basic Information

- Place of Origin: china
- Brand Name: INFINITE STARS
- Certification: CE, ISO9001, ISO45001, ISO14001
- Minimum Order Quantity: 7 Sets
- Delivery Time: 5-8 work days
- Payment Terms: L/C, D/A, D/P, T/T, Western Union
- Supply Ability: 2000 Sets PER Month

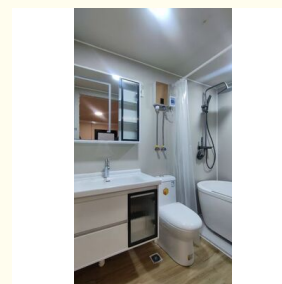
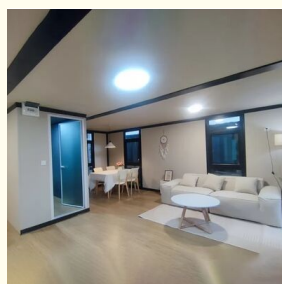
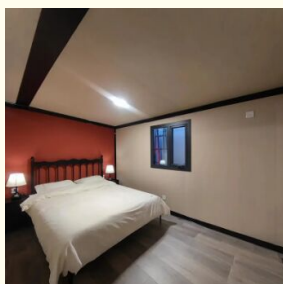


Product Specification

- Name: Expandable Container House
- Standard: AISI, ASTM, BS, DIN, GB, JIS
- Structure: Q235B, Q345B Or Other Requested
- Open Size: 6300x5850x2500mm
- Closed Size: 2250x5850x2500mm
- Floor: 15mm Fiber Cement Board
- Window: W1130*H1100mm With Main And Subframe
- Window Of Bathroom: W400*H600mm Without Screen
- Door: W1520*H2200mm Aluminum Sliding Door
- Wall Panel: 50mm EPS/Mineral Wool/Glass Wool Sandwich Panel
- Application: Office/Hotel/Resort/School/Living House/Store/Shop/Stadium/Shopping Mall/Warehouse/Workshop/Hospital/Plant
- Tolerance: $\pm 1\%$
- Processing Service: Bending, WELDING, Decoiling, Cutting,



More Images



Product Description

Looking for a durable, cost-effective, and versatile housing solution? Our prefab modular expandable container homes are engineered for modern living. Built with high-strength steel frames and insulated sandwich panels, these units seamlessly transition from a compact, shippable module to a spacious living area. Featuring a sleek contemporary design, they offer a perfect blend of industrial resilience and residential comfort, ideal for a wide range of applications worldwide.

Key Features & Advantages

- **Superior Expandable Design:** Maximizes space efficiency. Ships compactly (2250x5850x2500mm) and expands to a comfortable living area (6460x5850x2530mm), drastically reducing logistics costs.
- **Exceptional Durability:** Constructed from robust steel (Q235B/Q345B) and engineered to meet international standards (AISI, ASTM, BS, etc.). With a lifespan of 15+ years, it withstands harsh weather and demanding conditions.
- **Cost-Effective Solution:** Achieve significant savings—up to $\frac{1}{3}$ the cost of traditional construction—without compromising on quality or structural integrity.
- **Rapid Deployment & Flexibility:** Delivered as a complete, pre-assembled unit. Requires minimal on-site work and can be easily relocated, offering unparalleled flexibility.
- **Premium Build Components:** Includes a steel/aluminum alloy door, large windows (W1130xH1100mm), a 15mm fiber cement board floor, and options for EPS, mineral wool, or glass wool wall insulation for thermal and acoustic comfort.

Technical Specifications at a Glance

Item	Specification
Expanded Size	6460mm (W) x 5850mm (L) x 2530mm (H)
Transport Size	2250mm (W) x 5850mm (L) x 2500mm (H)
Primary Structure	Steel Frame (Q235B/Q345B)
Wall/Roof Panel	50mm Sandwich Panel (EPS/Mineral Wool/Glass Wool)
Main Door	Aluminum Alloy Sliding Door (W1520 x H2200mm)
Main Window	W1130 x H1100mm with Frame
Floor	15mm Fiber Cement Board
Design Life	15+ Years
Key Applications	Residential Homes, Offices, Hotels, Retail Shops, Emergency Shelters, Remote Site Accommodation

Frequently Asked Questions (FAQ)

Q: What is the delivery and setup process?

A: The home is delivered as a fully finished, sea-worthy package. On-site, it simply requires connection to utilities and expansion, which can typically be completed within a few days with minimal labor.

Q: Are these homes suitable for permanent living?

A: Absolutely. With their durable steel construction, high-quality insulation, and compliant building materials, they are designed for safe, comfortable, and long-term residential use.

Q: Can I customize the layout or interior finishes?

A: Yes. While we offer standard high-spec models, we provide various customization options for interior partitions, fixtures, and external cladding to meet specific project needs.

Q: What foundations are required?

A: A simple, level concrete slab or piled foundation is typically sufficient, making site preparation faster and more economical than for traditional buildings.

Q: Are you a certified manufacturer?

A: Yes. We are Suzhou Stars Integrated Housing Co., Ltd., a professional manufacturer with extensive experience supplying large-scale global projects, including the 2022 Qatar World Cup. Our production adheres to strict international standards.

Explore a smarter, sustainable building solution. Contact us today to discuss your project requirements and receive a detailed quote for your modular expandable container home.



Suzhou Stars Integrated Housing Co., Ltd.



+8615228076365



sales@szstarhouse.com



prefabricated-containerhouses.com

NO.1 ZHUJIABANG VILLIAGE.ZHENZE TOWN,WUJANG,SUZHOU,CHINA