



20ft Size Expandable Container House with Rapid Deployment and Steel Frame Structure for Modern Living

Our Product Introduction

for more products please visit us on prefabricated-containerhouses.com

Basic Information

- Place of Origin: china
- Brand Name: INFINITE STARS
- Certification: CE, ISO9001, ISO45001, ISO14001
- Minimum Order Quantity: 7 Sets
- Delivery Time: 5-8 work days
- Payment Terms: D/A, L/C, D/P, T/T, Western Union
- Supply Ability: 2000 Sets PER Month

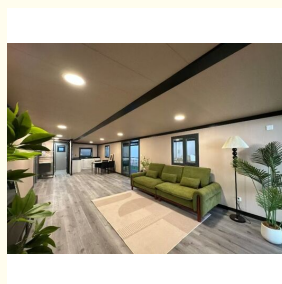
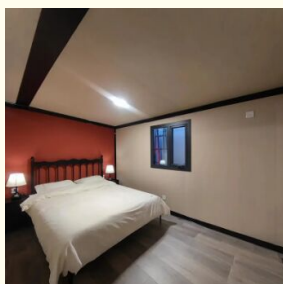
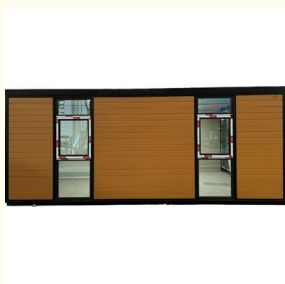


Product Specification

- Standard: AISI, ASTM, BS, DIN, GB, JIS
- Name: Expandable Container House
- Structure: Q235B, Q345B Or Other Requested
- Open Size: 6300x5850x2500mm
- Closed Size: 2250x5850x2500mm
- Floor: 15mm Fiber Cement Board
- Window: W1130*H1100mm With Main And Subframe
- Window Of Bathroom: W400*H600mm Without Screen
- Door: W1520*H2200mm Aluminum Sliding Door
- Wall Panel: 50mm EPS/Mineral Wool/Glass Wool Sandwich Panel
- Application: Office/Hotel/Resort/School/Living House/Store/Shop/Stadium/Shopping Mall/Warehouse/Workshop/Hospital/Plant
- Tolerance: $\pm 1\%$
- Processing Service: Bending, WELDING, Decoiling, Cutting,



More Images



Product Description

Innovative & Portable Living: The 20ft Folding Expandable Container House

Searching for a smart, sustainable, and instantly deployable housing solution? Our 20ft Folding Expandable Container House combines cutting-edge design with practical engineering. This modular home transforms from a compact, transportable unit into a spacious, comfortable living area in minimal time, offering an unparalleled blend of convenience and quality.

Core Features & Design

This contemporary mobile home features a unique "moneybox" folding mechanism. It ships in a closed, sea-worthy size of 2250x5850x2500mm (LxWxH), easily expanding on-site to a generous 6460x5850x2530mm. The core structure utilizes high-grade steel (Q235B/Q345B) for maximum strength, paired with 50mm thick insulated sandwich panels (EPS, Mineral Wool, or Glass Wool options) for superior thermal and acoustic performance. The inclusion of a large aluminum alloy sliding door (1520x2200mm) and PVC windows creates a bright, modern interior environment right out of the box.

Key Benefits for You

- **Ultra-Fast Installation:** Delivered fully assembled. The folding design allows for rapid deployment, slashing on-site construction time and costs by up to 70%.
- **Exceptional Durability:** Built with robust steel and corrosion-resistant materials, it withstands harsh climates and offers a service life exceeding 15 years with minimal maintenance.
- **Cost-Effective & Eco-Conscious:** The efficient factory prefabrication process reduces material waste and overall expense. Its excellent insulation lowers long-term energy consumption.
- **Unmatched Versatility:** A perfect turnkey solution for diverse needs: affordable housing, remote workforce camps, pop-up retail stores, emergency shelters, or comfortable vacation homes.

Technical Specifications at a Glance

Model	Folding (Moneybox) Expandable Container House
Standard Sizes	Open: 6300x5850x2500mm; Closed for Transport: 2250x5850x2500mm
Wall/Roof	50mm Insulated Sandwich Panel
Floor	15mm Fiber Cement Board
Compliance	Manufactured to AISI, ASTM, BS, DIN, GB, JIS standards.
Production Tolerance	±1%
Main Materials	Steel Structure Frame, Sandwich Panels

Frequently Asked Questions (FAQ)

Q: How long does it take to set up the house on-site?

A: With its pre-assembled, folding design, the basic structure can be expanded and secured by a small team within a matter of hours, significantly faster than traditional construction.

Q: Are utilities and interior finishes included?

A: The house comes as a complete shell with doors, windows, and insulation. We offer comprehensive optional packages for electrical wiring, plumbing, interior partitioning, and finishing to meet your exact specifications.

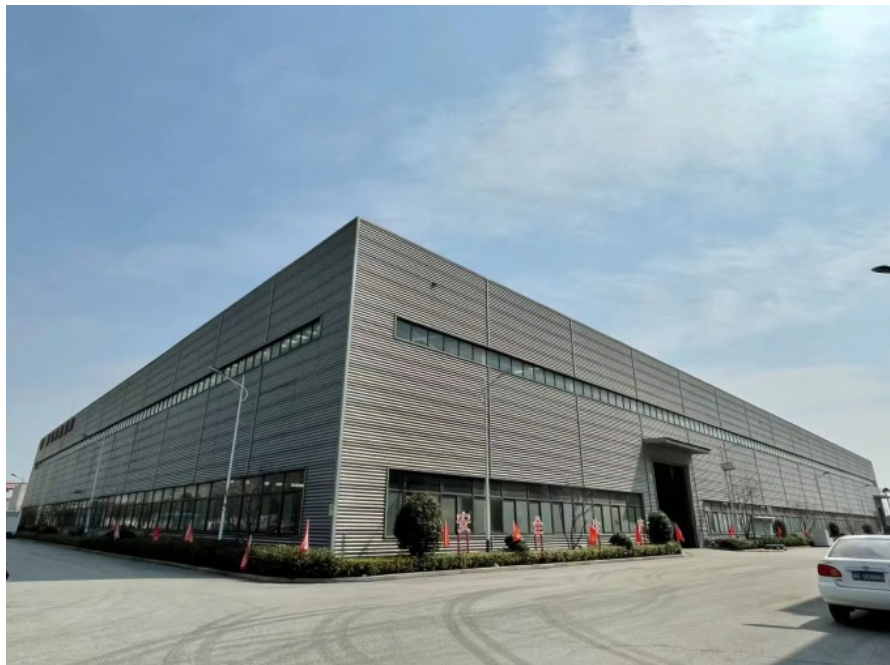
Q: Can it be relocated after initial installation?

A: Yes, a primary advantage is its portability. The unit can be folded back to its compact size, transported, and redeployed at a new location with relative ease.

Q: What is your experience with international projects?

A: As Suzhou Stars Integrated Housing, we have extensive export experience and adhere to global standards. Our portfolio includes supplying high-quality units for major international projects such as the 2022 Qatar World Cup infrastructure.

We are a specialized manufacturer dedicated to providing innovative, reliable, and cost-effective prefabricated housing solutions worldwide. Contact us today to discuss your project requirements and receive a customized quotation.



Suzhou Stars Integrated Housing Co., Ltd.



+8615228076365



sales@szstarhouse.com



prefabricated-containerhouses.com

NO.1 ZHUJIABANG VILLIAGE,ZHENZE TOWN,WUJANG,SUZHOU,CHINA