

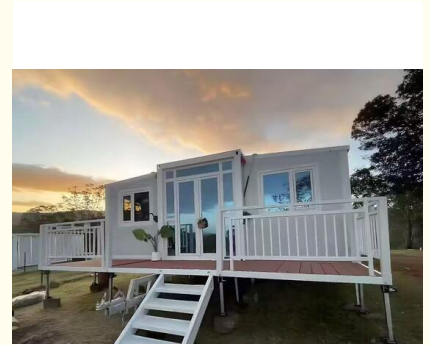


20ft Expandable Container House with 3 Bedrooms and Steel Frame Structure for Modern Living

Our Product Introduction

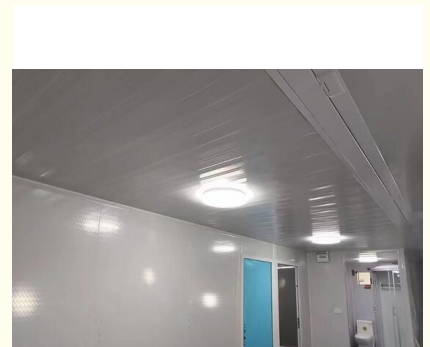
for more products please visit us on prefabricated-containerhouses.com

Basic Information

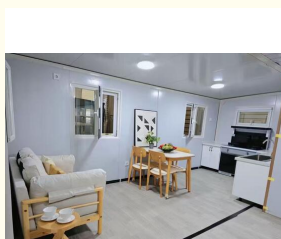


Product Specification

- Highlight: 20ft Size Expandable Container House, 3 Bedrooms Prefabricated Container Home, Steel Frame Structure Modular Container Residence



More Images



Product Description

Looking for a versatile, durable, and rapidly deployable housing solution? Our **20ft Prefabricated Expandable Container House** redefines modern living. Designed with contemporary aesthetics and engineered for performance, it's ideal for residential, commercial, or humanitarian applications.

Product Features & Highlights:

This innovative modular home transforms from a compact closed size of 2250x5850x2500mm (LxWxH) into a spacious 6460x5850x2530mm living area. Its expandable "moneybox" design maximizes space without compromising portability. Built with a robust steel structure (Q235B/Q345B) and 50mm thick EPS, Mineral Wool, or Glass Wool sandwich panels, it ensures excellent thermal insulation, structural integrity, and durability. The exterior features a sleek aluminum alloy sliding door (1520x2200mm) and large windows (1130x1100mm), filling the interior with natural light.

Key Advantages:

- **Rapid Deployment & Cost-Effective:** Prefabricated and fully assembled prior to delivery, it significantly reduces on-site construction time and labor costs.
- **Superior Strength & Longevity:** Made from high-grade steel and quality sandwich panels, it offers a life span of 15+ years, resistant to harsh weather conditions.
- **Eco-Friendly & Sustainable:** Repurposing the container concept minimizes waste. The energy-efficient insulation reduces heating and cooling costs.
- **Ultimate Flexibility:** Perfect as a permanent residence, vacation home, site office, retail shop, clinic, or emergency shelter. Its modularity allows for easy stacking and combination.

Technical Specifications:

- **Structure:** Steel Frame with Sandwich Panel Walls
- **Floor:** 15mm Fiber Cement Board
- **Standard Sizes:** Open: 6300x5850x2500mm; Closed: 2250x5850x2500mm
- **Door/Window:** Aluminum Alloy Sliding Door & PVC Windows
- **Standards:** Complies with GB, ASTM, BS, DIN, JIS, etc.
- **Tolerance:** ±1%
- **Place of Origin:** Guangzhou, China

Frequently Asked Questions (FAQ):

Q: What is the delivery and installation process?

A: The house is prefabricated and delivered in a compact, sea-worthy package. On-site, it expands easily with basic tools, requiring minimal foundation work for quick setup.

Q: Can the interior layout be customized?

A: Yes! While the standard layout features 3 bedrooms, we offer various customization options for interior partitions, fixtures, and finishes to suit your specific needs.

Q: Is it suitable for extreme climates?

A: Absolutely. The high-quality steel structure and thick insulated sandwich panels provide excellent thermal performance and resilience in diverse environments.

Q: What about certifications and project experience?

A: We manufacture to international standards (EU, US, AU) and have a proven track record, including supplying units for major projects like the 2022 Qatar World Cup.

Suzhou Stars Integrated Housing, a subsidiary of Wujiang Saima, combines over 15 years of expertise with advanced production lines to deliver reliable, high-quality prefabricated homes globally. Contact us today for your integrated housing solution.



Suzhou Stars Integrated Housing Co., Ltd.



+8615228076365



sales@szstarhouse.com



prefabricated-containerhouses.com

NO.1 ZHUJIABANG VILLIAGE.ZHENZE TOWN,WUJANG,SUZHOU,CHINA