



Luxury Expandable Container Home with Q235B/Q345B Steel Frames, 15+ Year Lifespan, and 6460mm Expandable Size

Our Product Introduction

for more products please visit us on prefabricated-containerhouses.com

Basic Information

- Place of Origin: china
- Brand Name: INFINITE STARS
- Certification: CE, ISO9001, ISO45001, ISO14001
- Minimum Order Quantity: 7 Sets
- Delivery Time: 5-8 work days
- Payment Terms: L/C, D/A, D/P, T/T, Western Union
- Supply Ability: 2000 Sets PER Month

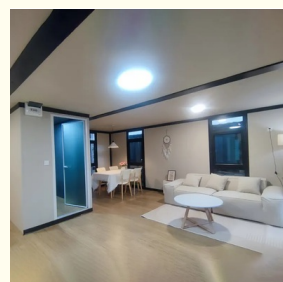
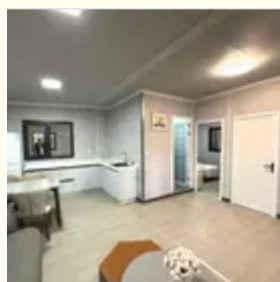
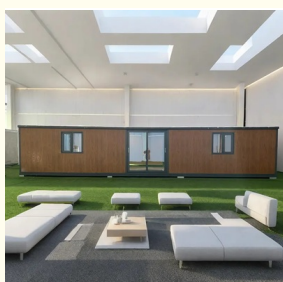


Product Specification

- Name: Expandable Container House
- Standard: AISI, ASTM, BS, DIN, GB, JIS
- Application: Office/Hotel/Resort/School/Living House/Store/Shop/Stadium/Shopping Mall/Warehouse/Workshop/Hospital/Plant
- Tolerance: $\pm 1\%$
- Processing Service: Bending, WELDING, Decoiling, Cutting, PUNCHING
- Place Of Origin: China
- Life Spans: 15 Years
- Main Material: Steel Structure Frames, Sandwich Panel
- Highlight:
 - Q235B/Q345B Steel Frames Expandable Container Home
 - 15+ Year Lifespan Modular Container Residence
 - 6460mm Expandable Size Prefabricated Container House



More Images



Product Description

Suzhou Stars Integrated Housing redefines modern living with our premium Luxury Expandable Container House. Designed for families seeking a contemporary, sustainable, and versatile home solution, this product merges innovative engineering with high-end comfort. Crafted from robust steel structure and high-quality sandwich panels, it offers a perfect blend of durability and style.

Key Features & Advantages

- Modular & Expandable Design:** Our container homes feature a smart modular design, allowing seamless expansion from a compact closed size (2250mm W) to a spacious open size (6460mm W x 5850mm L x 2530mm H). This flexibility enables effortless customization and scalability to fit your evolving spatial needs.
- Superior Construction & Durability:** Built with Q235B/Q345B steel frames and 50mm EPS/Mineral Wool sandwich panels, the structure guarantees exceptional resilience against harsh weather, ensuring safety and a long life span of 15+ years.
- Luxurious Contemporary Living:** Experience modern comfort with standard features like a 15mm fiber cement board floor, large aluminum alloy windows (W1130*H1100mm), and a sleek aluminum sliding door (W1520*H2200mm). The interior is designed for a bright, airy ambiance.
- Eco-Friendly & Sustainable:** As a transformed shipping container solution, this home promotes sustainability by repurposing materials. Its energy-efficient design and eco-friendly components minimize environmental impact.
- Rapid Assembly & Mobility:** Delivered as a completed, prefabricated unit with sea-worthy packaging, our homes enable quick on-site assembly. Their mobile nature is ideal for temporary or permanent placement without lengthy construction.

Technical Specifications Summary

Item	Specification
Expand Size	6460mm (W) x 5850mm (L) x 2530mm (H)
Closed Size	2250mm (W) x 5850mm (L) x 2530mm (H)
Structure	Steel Frame (Q235B/Q345B)
Wall/Roof Panel	50mm EPS/Mineral Wool/Glass Wool Sandwich Panel
Main Door	Aluminum Alloy Sliding Door
Life Span	15+ Years
Applications	Luxury Villa, Resort, Home Office, Remote Residence

Versatile Applications

From luxurious primary family residences and vacation homes to commercial uses like offices, boutique hotels, pop-up retail stores, and even emergency clinics, this modular solution adapts to diverse needs across residential, commercial, and humanitarian sectors.

FAQ

Q: What is the delivery and assembly process?

A: The home is prefabricated and delivered in a compact, sea-worthy package. On-site, it can be easily expanded and assembled quickly by our team or your local contractors, saving significant time and cost.

Q: Are these homes suitable for extreme climates?

A: Yes. The robust steel construction and insulated sandwich panels provide excellent thermal efficiency and durability, making them suitable for various climates, from hot deserts to cold regions.

Q: Can I customize the interior layout and finishes?

A: Absolutely. The modular design allows for extensive customization. We offer various optional upgrades for interiors, bathrooms, kitchens, and exterior cladding to match your personal style.

Q: What standards do your products meet?

A: Our manufacturing complies with international standards including ASTM, BS, DIN, and GB. We tailor specifications to meet regional requirements for safety and quality.

Why Choose Us?

As a specialist subsidiary of Wujiang Saima, we bring nearly two decades of expertise. We own complete production lines and have supplied major projects globally, including the 2022 Qatar World Cup. We are committed to providing world-class integrated housing solutions with professional service and reliable after-sales support.

Embrace innovative, luxurious, and responsible living. Contact us today to design your dream expandable container home.



Suzhou Stars Integrated Housing Co., Ltd.

+8615228076365

sales@szstarhouse.com

prefabricated-containerhouses.com

NO.1 ZHUJIABANG VILLIAGE.ZHENZE TOWN,WUJANG,SUZHOU,CHINA