



Fold-out Design Expandable Container House with High-grade Galvanized Steel and Rock Wool Insulation

Our Product Introduction

for more products please visit us on prefabricated-containerhouses.com

Basic Information

- Place of Origin: china
- Brand Name: INFINITE STARS
- Certification: CE,ISO9001,ISO45001,ISO14001
- Minimum Order Quantity: 7 Sets
- Delivery Time: 5-8 work days
- Payment Terms: L/C,D/A,D/P,T/T,Western Union
- Supply Ability: 2000 Sets PER Month

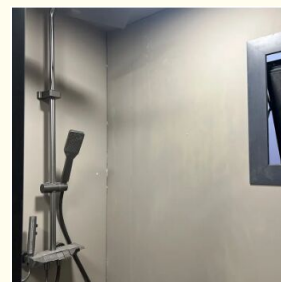
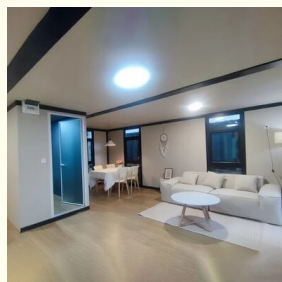
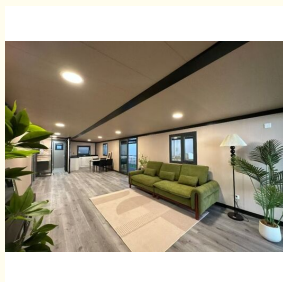
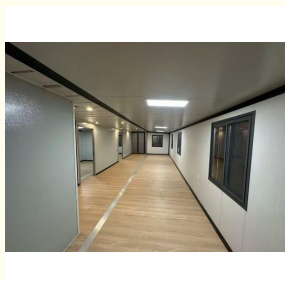


Product Specification

- Name: Expandable Container House
- Bedrooms: 1-4 Bedroom Options Available
- Windows & Doors: Broken-bridge Aluminum For Insulation And Aesthetics
- Structure: High-grade Galvanized Steel, Rock Wool Insulation, Sandwich Panels
- Flooring: PVC Leather Or SPC Flooring
- Quick Installation: Fold-out Design, Minimal Labor, No Heavy Equipment Needed
- Transport: Compact Delivery, Easy To Move And Deploy
- Tolerance: $\pm 1\%$
- Place Of Origin: China
- Life Spans: 15 Years
- Main Material: Steel Structure Frames, Sandwich Panel
- Highlight: **Fold-out Design Expandable Container House, High-grade Galvanized Steel Prefab Expandable**



More Images



Product Description

Our expandable prefab house redefines modern, flexible living with its innovative fold-out design and robust construction. Available in versatile sizes (7x20ft, 13x20ft, 15x20ft, 16x20ft, 19x20ft), each unit is a complete living space featuring a bedroom, shower, toilet, and lounge area. Designed for rapid deployment, it serves as an ideal solution for residential, commercial, agricultural, or emergency housing projects.

Key Features & Benefits

- Rapid Installation & Portability:** Engineered for efficiency, our fold-out prefab house can be installed by just four workers in under 10 minutes without heavy machinery. Its compact design ensures easy transportation and minimal on-site labor, significantly saving time and cost.
- Customizable & Functional Layouts:** Choose from open-plan or 1 to 4 bedroom configurations. Each unit comes with a fully fitted L-shaped kitchen and a modern bathroom with dry/wet separation, frosted glass doors, and premium fixtures, ensuring immediate comfort and convenience.
- Superior Durability & Safety:** Built with a high-grade galvanized steel frame and finished with an electrostatic spray coating, the structure is corrosion-resistant and extremely sturdy. Walls and roof utilize EPS sandwich panels with rock wool insulation, providing excellent thermal performance and weather resistance for harsh or remote climates, including African regions.
- High-Quality Finishes:** The house features broken-bridge aluminum windows and doors for enhanced insulation and aesthetics. Interior flooring options include durable PVC leather or SPC, while the fireproof magnesium glass floor adds an extra layer of safety.

Technical Specifications at a Glance

Category	Specification
Frame	Fully galvanized steel, electrostatic spray coating
Walls	75 mm EPS sandwich panel
Roof	0.35mm corrugated sheet + 50mm EPS sandwich panel
Floor	18mm fireproof magnesium glass + PVC/SPC flooring
Windows	Main (930x930mm), Bathroom (500x500mm)
Bathroom	Dry/Wet separation, shower, toilet, basin
Kitchen	L-shaped, fully fitted cabinetry
Electrical	Complies with CE/AU/US standards (customizable)

Frequently Asked Questions (FAQ)

Q: How quickly can the house be installed and occupied?

A: Thanks to its innovative fold-out design, a team of four can complete the on-site installation in less than 10 minutes. The house is delivered with fully fitted interiors, allowing for immediate occupancy.

Q: Is this prefab house suitable for extreme weather conditions?

A: Yes. The galvanized steel structure, combined with insulated sandwich panels and rock wool, offers strong resistance to various climates, making it durable for hot, cold, or remote environments.

Q: Can the interior layout be customized?

A: Absolutely. We offer flexible layouts ranging from open-plan to up to 4 bedrooms. The interior fittings and electrical standards can also be tailored to meet specific project requirements.

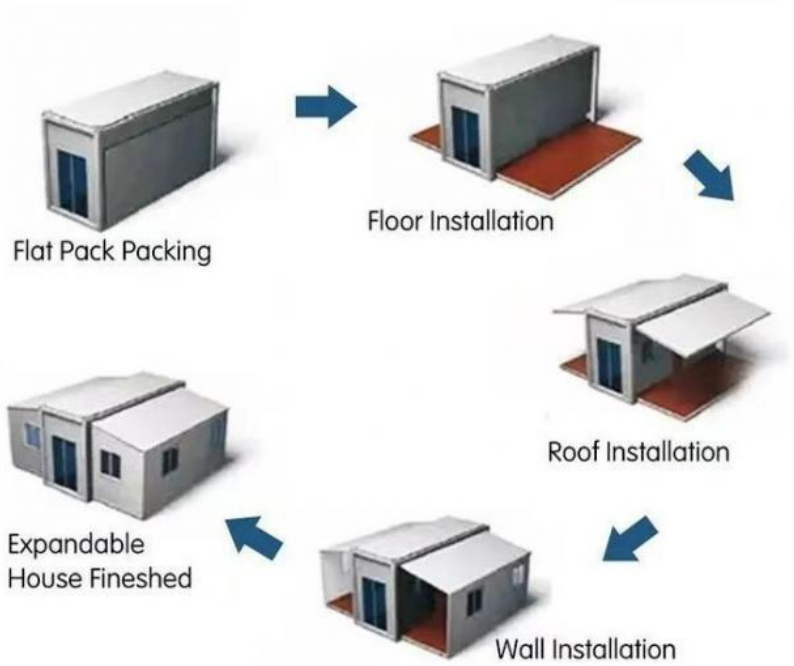
Q: What are the primary applications for this expandable unit?

A: Its versatility makes it perfect for multiple uses: permanent or temporary residential housing, modular hotels, agricultural staff quarters, construction site offices, and rapid disaster relief shelters.

Q: What are the main cost advantages?

A: The design slashes expenses through reduced construction time, minimal labor needs, and lower transportation costs due to compact delivery, offering a high-quality housing solution at a competitive price point.

Explore a smarter, faster, and more adaptable building solution. Contact us today to discuss your project needs and find the perfect prefab expandable house model for you.



Easy installation: 4 workers + 10 mins = 1 house



Suzhou Stars Integrated Housing Co., Ltd.



+8615228076365



sales@szstarhouse.com



prefabricated-containerhouses.com

NO.1 ZHUJIABANG VILLIAGE.ZHENZE TOWN,WUJANG,SUZHOU,CHINA