



Expandable Prefab House with Galvanized Steel Structure and Fold-Out Design in Multiple Sizes

Our Product Introduction

for more products please visit us on prefabricated-containerhouses.com

Basic Information

- Place of Origin: china
- Brand Name: INFINITE STARS
- Certification: CE, ISO9001, ISO45001, ISO14001
- Minimum Order Quantity: 7 Sets
- Delivery Time: 5-8 work days
- Payment Terms: L/C, D/A, D/P, T/T, Western Union
- Supply Ability: 2000 Sets PER Month

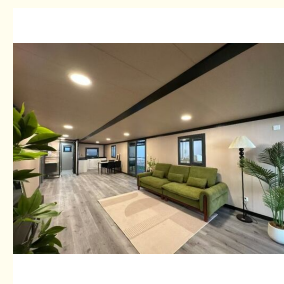


Product Specification

- Name: Expandable Container House
- Standard: AISI, ASTM, BS, DIN, GB, JIS
- Application: Office/Hotel/Resort/School/Living House/Store/Shop/Stadium/Shopping Mall/Warehouse/Workshop/Hospital/Plant
- Tolerance: $\pm 1\%$
- Processing Service: Bending, WELDING, Decoiling, Cutting, PUNCHING
- Place Of Origin: China
- Life Spans: 15 Years
- Main Material: Steel Structure Frames, Sandwich Panel
- Highlight:
 - Galvanized Steel Structure Expandable Prefab House
 - Fold-Out Design Prefabricated Container House
 - Multiple Sizes Available Modular Container Home



More Images



Product Description

Discover the Ultimate Expandable Prefab House with Metal Carved Panels

Our Expandable Prefab House merges innovative design with robust construction to meet diverse residential, commercial, and remote project needs. Engineered for rapid deployment, this versatile housing unit is perfect for those seeking efficiency without compromising on comfort or quality.

Product Features & Highlights

This prefab house series is available in multiple sizes (7x20ft, 13x20ft, 15x20ft, 16x20ft, 19x20ft), each designed as a complete living space. Every unit includes a bedroom, modern bathroom with dry/wet separation, a lounge area, and a fully fitted kitchen with L-shaped cabinetry. The standout feature is its intelligent **fold-out design**, enabling incredibly fast installation—a team of four workers can complete assembly in under 10 minutes without heavy machinery.

Durability is guaranteed with a high-grade **galvanized steel structure**, complemented by rock wool and EPS sandwich panel insulation for excellent thermal and acoustic performance. The exterior incorporates metal carved panels for enhanced aesthetics. Windows and doors feature broken-bridge aluminum for superior insulation. Inside, choose from PVC leather or SPC flooring for a modern, low-maintenance finish.

Key Advantages & Benefits

- **Rapid Deployment:** Dramatically save on time and labor costs. The compact, foldable design allows for easy transportation and immediate setup upon delivery.
- **Total Customization:** Adapt the layout to your exact needs. Options range from open-plan designs to configurations with 1, 2, 3, or 4 bedrooms.
- **Built to Last:** Constructed with weather-resistant, galvanized steel and protective coatings, this house is engineered to withstand harsh climates, making it ideal for challenging environments like African regions or remote sites.
- **Cost-Efficient Solution:** Reduce expenses related to traditional construction, lengthy timelines, and complex logistics.
- **Versatile Applications:** Use as a permanent residence, temporary worker housing, hotel or hospitality suite, agricultural field office, or emergency relief shelter.

Technical Specifications at a Glance

Category	Specification
Frame	Fully galvanized steel with electrostatic spray coating
Walls & Roof	75mm EPS wall panels; Roof: 0.35mm corrugated sheet + 50mm EPS panel
Flooring	18mm fireproof magnesium glass + PVC/SPC top layer
Windows	Main (930x930mm) & Bathroom (500x500mm), broken-bridge aluminum
Bathroom	Full wet room with shower, toilet, basin; frosted glass door
Kitchen	Fully fitted with L-shaped cabinetry
Electrical	Compliant with CE, AU, US standards (customizable)

Frequently Asked Questions (FAQ)

Q: How quickly can the house be installed?

A: With its unique fold-out mechanism, a standard unit can be fully installed by a crew of four in under 10 minutes.

Q: Is the house suitable for extreme climates?

A: Yes. The combination of a galvanized steel frame, rock wool/EPS insulation, and weather-resistant materials makes it highly durable for hot, cold, or humid conditions.

Q: Can I customize the interior layout?

A: Absolutely. We offer flexible floor plans ranging from open layouts to units with up to 4 bedrooms to suit your specific requirements.

Q: What are the transportation logistics?

A: The houses are delivered in a compact, folded state, minimizing shipping costs and complexity. They are easy to transport to even

remote sites.

Q: Is the kitchen and bathroom pre-installed?

A: Yes. Each unit comes with a fully fitted kitchen and a complete, modern bathroom including fixtures, ensuring move-in readiness.

Explore the future of modular living. Contact us today to find the perfect expandable prefab house solution for your project.



Suzhou Stars Integrated Housing Co., Ltd.



+8615228076365



sales@szstarhouse.com



prefabricated-containerhouses.com

NO.1 ZHUJIABANG VILLIAGE.ZHENZE TOWN,WUJANG,SUZHOU,CHINA