



20ft Size Expandable Container House with Rapid Deployment and Durable Steel Frame for Multi-Use Applications

Our Product Introduction

for more products please visit us on prefabricated-containerhouses.com

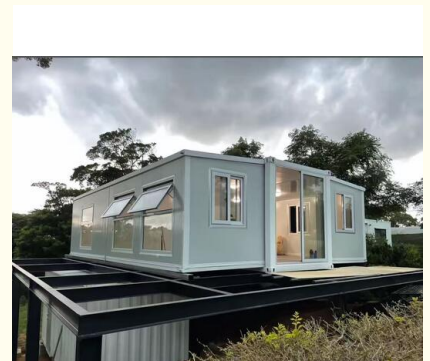
Basic Information

- Place of Origin: china
- Brand Name: INFINITE STARS
- Certification: CE,ISO9001,ISO45001,ISO14001
- Model Number: INFINITE STARS E01
- Minimum Order Quantity: 7 Sets
- Packaging Details: Tailored to individual preferences
- Delivery Time: 5-8 work days
- Payment Terms: L/C,D/A,D/P,T/T,Western Union
- Supply Ability: 2000 Sets PER Month

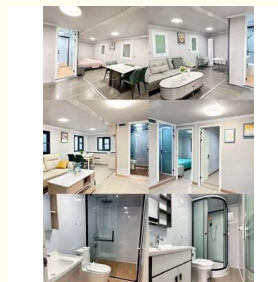
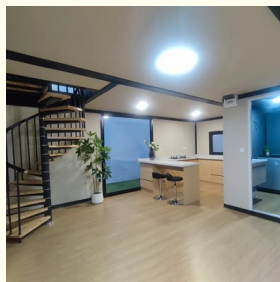
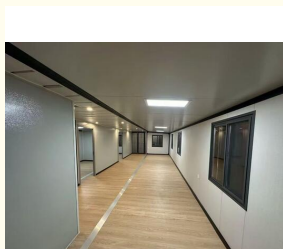


Product Specification

- Name: Expandable Container House
- Standard: AISI, ASTM, BS, DIN, GB, JIS
- Structure: Q235B,Q345B Or Other Requested
- Wall Panel: 50mm EPS/Mineral Wool/Glass Wool Sandwich Panel
- Application: Office/Hotel/Resort/School/Living House/Store/Shop/Stadium/Shopping Mall/Warehouse/Workshop/Hospital/Plant
- Tolerance: $\pm 1\%$
- Processing Service: Bending, WELDING, Decoiling, Cutting, PUNCHING
- Type: Moneybox Expandable Container House
- Place Of Origin: China
- Life Spans: 15 Years
- Main Material: Steel Structue Frames, Sandwich Panel
- Highlight: **20ft Size Expandable Container House, Rapid Deployment Prefab Container House**



More Images



Product Description

Meta Description: A 20ft dual-wing foldable container house. Rapidly deployable, durable prefab solution for storage, housing & workspaces across industries. View specs & FAQs.

20ft Dual-Wing Foldable Container: Space, On Demand

Our 20ft Dual-Wing Foldable Container is the intelligent answer to dynamic space needs. This prefabricated, expandable unit transforms from a standard shipping container into a wide, secure facility in hours. It is engineered for durability and rapid deployment across diverse sectors, providing a practical and cost-effective alternative to traditional structures.

Features & Specifications

The core innovation is the dual-wing expansion system. The sides unfold to instantly create a spacious interior, tripling the usable floor area.

Key Specs:

Size: 20ft

Folded for Transport: 5900 x 2200 x 2480 mm

Expanded for Use: 5900 x 6300 x 2480 mm

Build: Heavy-duty steel frame with protective coating.

Setup: Simple mechanism for quick assembly with minimal labor.

Your Operational Advantages

1. **Rapid Response:** Deploy fully functional space in under a day, critical for emergencies and project startups.
2. **All-Weather Durability:** Built to withstand harsh conditions, offering secure, long-lasting protection for contents or personnel.
3. **Logistics & Storage Optimized:** Ships as one standard container, drastically cutting freight costs. Folded storage saves valuable yard space.
4. **Total Customization:** Use as high-security storage or easily outfit as an office, clinic, mobile shop, or living quarters with electrical, plumbing, and interior fittings.

FAQ at a Glance

Q: How long to set up?

A: A small team can expand it in 1-2 hours.

Q: Is it weatherproof when expanded?

A: Yes, it features robust seals for complete weather resistance.

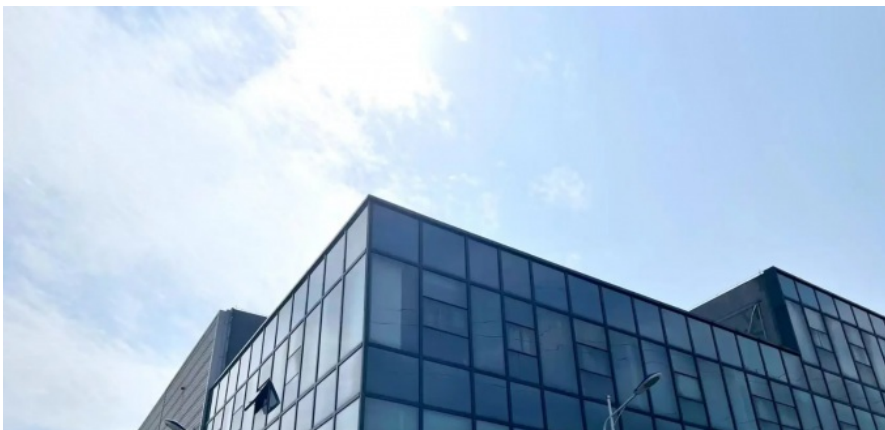
Q: Can we customize the interior?

A: Absolutely. We offer various pre-installation packages for walls, power, HVAC, and more.

Q: What's the lifespan?

A: The primary structure is designed for 15+ years of service.

Transform your project mobility today. Contact us for a customized solution and quote.





Suzhou Stars Integrated Housing Co., Ltd.



+8615228076365



sales@szstarhouse.com



prefabricated-containerhouses.com

NO.1 ZHUJIABANG VILLIAGE.ZHENZE TOWN,WUJANG,SUZHOU,CHINA