



20ft Bi-Fold Expandable Container House with Steel Structure Frame for Versatile Modular Living

Our Product Introduction

for more products please visit us on prefabricated-containerhouses.com

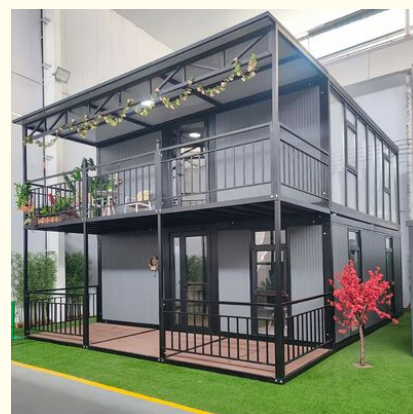
Basic Information

- Place of Origin: china
- Brand Name: INFINITE STARS
- Certification: CE,ISO9001,ISO45001,ISO14001
- Minimum Order Quantity: 7 Sets
- Delivery Time: 5-8 work days
- Payment Terms: L/C,D/A,D/P,T/T,Western Union
- Supply Ability: 2000 Sets PER Month

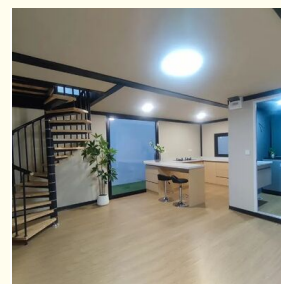
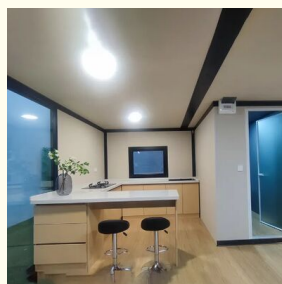
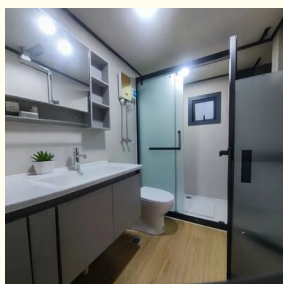
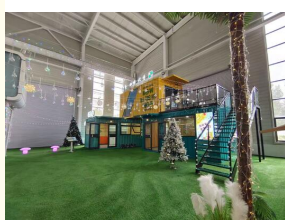


Product Specification

- Name: Expandable Container House
- Size: 20foot
- External Dimensions Before 5900*2200*2480mm
Expanding:
- Expand Size: 5900mm*6300mm*2480mm
- Application: Office/Hotel/Resort/School/Living House/Store/Shop/Stadium/Shopping Mall/Warehouse/Workshop/Hospital/Plant
- Tolerance: $\pm 1\%$
- Processing Service: Bending, WELDING, Decoiling, Cutting, PUNCHING
- Type: Moneybox Expandable Container House
- Place Of Origin: China
- Life Spans: 15 Years
- Main Material: Steel Structue Frames, Sandwich Panel
- Highlight: **20ft Size Expandable Container House, Bi-Fold Expansion Prefabricated Container**



More Images



Product Description

Revolutionize your concept of space with our 20ft Prefab Bi-Fold Expandable Container.

This groundbreaking unit is engineered for unparalleled transportation efficiency, rapid on-site deployment, and transformative spatial expansion, making it the ultimate modular solution for residential living, office workspaces, or boutique hotel accommodations.

Core Features & Advantages

Our Bi-Fold Expandable Container is a leap forward in modular design. Its patented dual-wing expansion mechanism allows the sides to seamlessly unfold, instantly and dramatically increasing usable floor space. This intelligent design solves the core challenge of balancing easy transport with spacious end-use.

- Transformative Space Efficiency:** Starting as a compact 20ft shipping container, it expands to over double its original width. This maximizes your interior area for living, working, or hospitality without sacrificing the logistical benefits of a standard container footprint.
- Optimized Logistics & Cost Savings:** In its folded state, it complies with standard ISO container dimensions (20ft), ensuring seamless, cost-effective transportation via ship, train, or truck. This drastically reduces shipping costs compared to pre-built wide loads.
- Rapid On-Site Deployment:** The expansion process is straightforward, requiring minimal labor and no heavy machinery. Your space is ready in a fraction of the time needed for traditional construction, accelerating project timelines for homes, pop-up offices, or hotel suites.
- Robust & Sustainable Build:** Constructed from high-quality, durable materials designed for longevity in various climates. Its modular and reusable nature promotes a sustainable, eco-friendly approach by reducing material waste and the carbon footprint associated with transport and conventional building.
- Ultimate Customization Potential:** The clear-span interior created after expansion is a blank canvas. It can be easily fitted out as a comfortable tiny home, a functional office with multiple workstations, or a stylish, compact hotel room, complete with insulation, electrical, plumbing, and custom finishes.

Technical Specifications Table

Parameter	Specification
Standard Size	20 Foot
External Dimensions (Folded)	5900mm (L) x 2200mm (W) x 2480mm (H)
External Dimensions (Expanded)	5900mm (L) x 6300mm (W) x 2480mm (H)
Key Feature	Bi-Fold Sidewall Expansion Mechanism
Primary Use Cases	Container Homes, Prefab Offices, Expandable Hotel Rooms, Modular Buildings

Frequently Asked Questions (FAQ)

Q: How long does it take to expand the container on site?

A: The expansion process is remarkably quick. With a small crew, the unit can be unfolded from its transport state to its fully expanded width typically within a few hours.

Q: Is the expanded structure as secure and weatherproof as a standard container?

A: Absolutely. The expansion mechanism features robust locking systems and high-quality seals. When fully expanded and locked, the unit maintains excellent structural integrity, security, and weather resistance.

Q: Can these containers be stacked when expanded?

A: Standard models are designed for single-story use once expanded. For multi-story projects, specific structural reinforcements and engineering designs are required. Please consult with our team for custom projects.

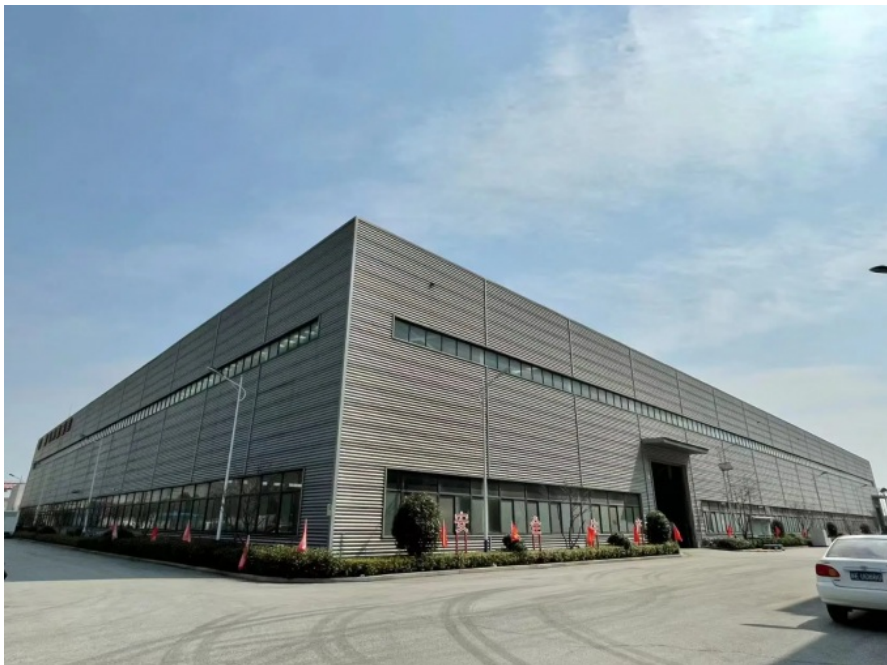
Q: Are utilities like plumbing and electricity difficult to install?

A: Not at all. The design accommodates easy installation of utilities. Pre-fabrication options are available where electrical conduits and plumbing chases are integrated into the frame, simplifying and speeding up the finishing process.

Q: What are the typical foundation requirements?

A: A level, stable foundation is required. This can range from simple concrete piers or blocks for temporary setups to a full concrete slab for permanent installations, depending on local codes and the intended use.

Discover the future of flexible, efficient, and smart space solutions. This Bi-Fold Expandable Container is more than just a structure; it's a versatile, cost-effective platform for countless applications. Contact us today to discuss how it can transform your next project.



Suzhou Stars Integrated Housing Co., Ltd.



+8615228076365



sales@szstarhouse.com



prefabricated-containerhouses.com

NO.1 ZHUJIABANG VILLIAGE.ZHENZE TOWN,WUJANG,SUZHOU,CHINA