



6460mm Expanded Size Steel Frame Expandable Container House with 15+ Year Lifespan

Our Product Introduction

for more products please visit us on prefabricated-containerhouses.com

Basic Information

- Place of Origin: china
- Brand Name: INFINITE STARS
- Certification: CE,ISO9001,ISO45001,ISO14001
- Model Number: INFINITE STARS E01
- Minimum Order Quantity: 7 Sets
- Delivery Time: 5-8 work days
- Payment Terms: ,L/C,D/A,D/P,T/T,Western Union
- Supply Ability: 2000 Sets PER Month

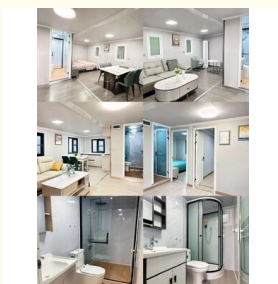
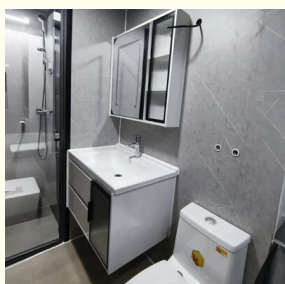


Product Specification

- Name: Expandable Container House
- Expanded Size: 6460mm(W) X 5850mm(L) X 2530mm(H)
- Transport Size: 2250mm(W) X 5850mm(L) X 2530mm(H)
- Main Structure: Steel Frame + Sandwich Panel
- Wall/Roof Panel: 50mm EPS/Mineral Wool/Glass Wool
- Standard Door: Aluminum Alloy Sliding Door
- Floor: 15mm Fiber Cement Board
- Application: Office/Hotel/Resort/School/Living House/Store/Shop/Stadium/Shopping Mall/Warehouse/Workshop/Hospital/Plant
- Design Life: 15 Years
- Compliance: Manufactured To GB, ASTM, BS, DIN, JIS Standards
- Tolerance: $\pm 1\%$
- Highlight: **6460mm Expanded Size Expandable Container House**



More Images



Product Description

Discover Luxury & Efficiency: 20ft Expandable Prefab Container Homes by INFINITE STARS

Our 20ft Expandable Container House redefines modern living and commercial spaces. Combining robust construction with contemporary design, this prefabricated home offers an ideal blend of luxury, durability, and flexibility for a wide range of global applications.

Product Features and Key Advantages

- **Smart Expandable Design:** Maximizes space efficiency. The unit transforms from a compact, transportable size (2250x5850x2500mm) to a spacious living area (6460x5850x2530mm), instantly doubling your usable space.
- **Premium Construction:** Built with a high-strength Steel Structure (Q235B/Q345B) and insulated 50mm Sandwich Wall Panels (EPS/Mineral Wool options). This ensures exceptional durability, thermal efficiency, and a lifespan of 15+ years.
- **Fully Prefabricated and Quick Assembly:** Delivered as a complete, finished unit. Significantly reduces on-site construction time and costs, allowing for immediate occupancy upon delivery.
- **Luxurious and Customizable Finishes:** Features a contemporary style with high-quality fittings including an Aluminum Sliding Door (W1520xH2200mm), large windows, and a 15mm Fiber Cement Board floor. Interior layouts and finishes can be customized to suit residential or commercial needs.
- **Exceptional Versatility:** Perfect for Affordable Housing, Vacation Homes, Mobile Offices, Retail Stores, Pop-up Cafes, Hotel Suites, Emergency Shelters, and Remote Site Accommodation for sectors like construction and mining.

Why Choose Our Expandable Container Home?

- **Proven Manufacturer:** We are a subsidiary of Wujiang Saima, with extensive experience supplying major projects globally, including the 2022 Qatar World Cup.
- **High Volume Capacity:** With a 20,000 units/month production ability and in-house manufacturing lines, we guarantee stable supply and consistent quality.
- **Export Expertise:** We are well-versed in international standards (European, American, Australian) and export logistics, offering sea-worthy packaging and flexible payment terms (T/T, L/C).
- **Comprehensive Solution:** From design to delivery, we provide end-to-end service, ensuring your modular home meets exact project requirements.

Frequently Asked Questions (FAQ)

Q: What is the Minimum Order Quantity (MOQ)?

A: The MOQ is 7 sets for this model.

Q: How is the house delivered and installed?

A: It is delivered as a fully assembled, finished unit. On-site, it simply requires connection to utilities and expansion via its integrated mechanism—no heavy construction needed.

Q: Can I customize the interior layout?

A: Yes. While we offer standard luxury finishes, layouts, partitions, and fixtures can be customized based on your specific application (residential, office, clinic, etc.).

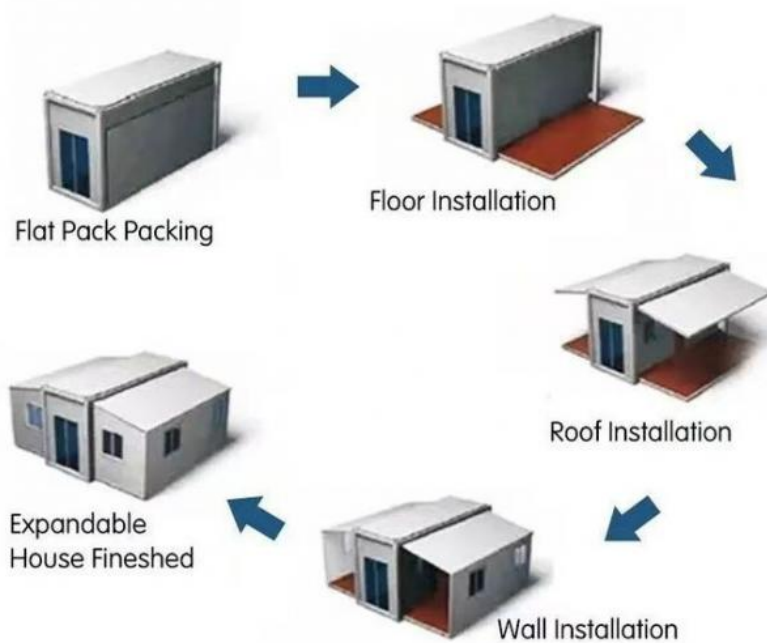
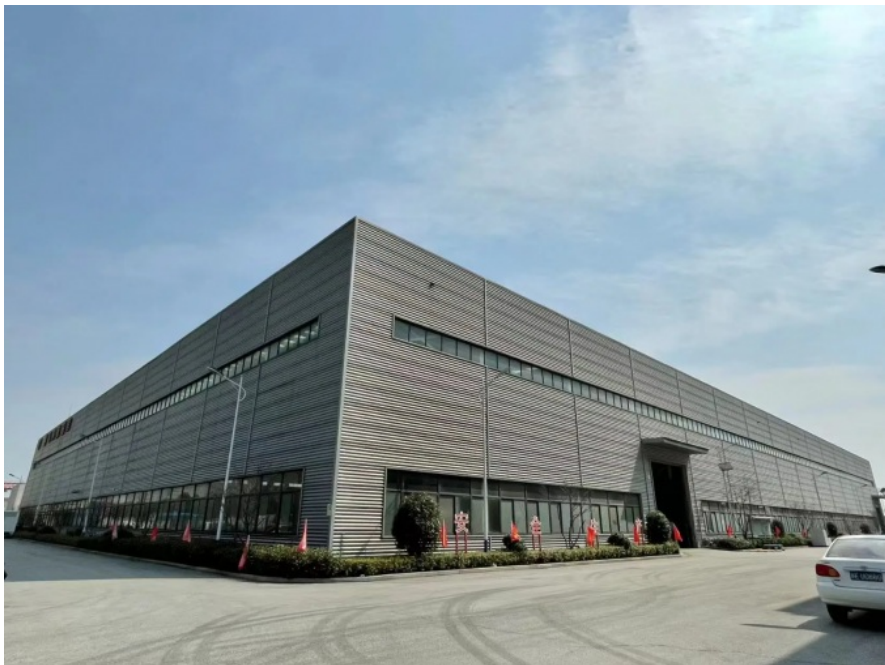
Q: What foundation is required?

A: A simple, level concrete slab or concrete pier foundation is typically sufficient, making site preparation fast and cost-effective.

Q: What about insulation and climate control?

A: The standard 50mm sandwich panels provide excellent insulation. For extreme climates, we offer upgraded panel options and can pre-install HVAC systems.

Ideal for developers, governments, NGOs, and businesses seeking reliable, scalable, and premium modular structures. Request a PDF brochure and get the best price for your project today.



Easy installation: 4 workers + 10 mins = 1 house



Suzhou Stars Integrated Housing Co., Ltd.

+8615228076365

sales@szstarhouse.com

prefabricated-containerhouses.com

NO.1 ZHUJIABANG VILLIAGE, ZHENZE TOWN, WUJANG, SUZHOU, CHINA