



40ft Size Luxury Expandable Container House with 74 m² Living Space and One-Day Installation

Our Product Introduction

for more products please visit us on prefabricated-containerhouses.com

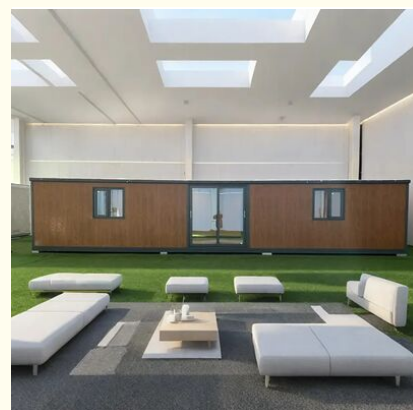
Basic Information

- Place of Origin: china
- Brand Name: INFINITE STARS
- Certification: CE, ISO9001, ISO45001, ISO14001
- Minimum Order Quantity: 7 Sets
- Delivery Time: 5-8 work days
- Payment Terms: L/C, D/A, D/P, T/T, Western Union, MoneyGram
- Supply Ability: 2000 Sets PER Month

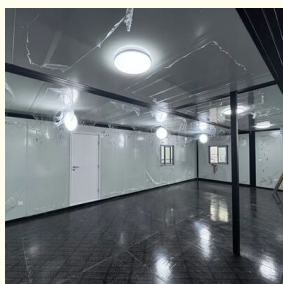
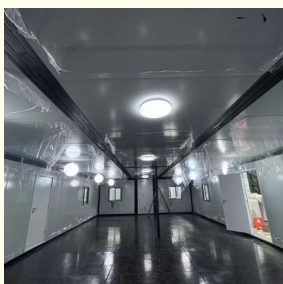


Product Specification

- Name: Expandable Container House
- Standard: AISI, ASTM, BS, DIN, GB, JIS
- Layout Customization: Number Of Bedrooms/bathrooms, Open/conventional Layouts
- Highlight: **40ft size Expandable Container House, 74 m² living space Prefabricated Container Home**
, One-day installation Luxury Container Residence



More Images



Product Description

40ft Luxury Expandable Container House

Discover our innovative 40ft Luxury Expandable Container House - a brilliant solution that ships compactly in a standard container, then unfolds on-site in about one day into a spacious 74 m² (796 sq ft) residence.

Built with a durable steel frame and premium insulation, this container home is designed for year-round comfort and withstands diverse climates. Fully customizable from layout to finishes, it serves perfectly as a primary home, vacation rental, office, or pop-up shop.

The key advantage? You get a high-quality, move-in-ready space in weeks, not months, with minimal waste and the flexibility to relocate or expand later.

Premium Expandable Container Residence - Frequently Asked Questions

What are the dimensions when fully expanded?

In its expanded state, the 40-foot model extends from a transport width of 2.25 meters to a generous 6.3 meters, delivering approximately 74 square meters (about 796 square feet) of elegant living space, perfect for permanent homes, boutique retreats, or premium rental investments.

What is the typical timeline for installation?

Engineered for efficiency, each unit arrives 90% factory-complete. A skilled six-person crew can typically complete on-site assembly and setup within one working day, allowing for rapid occupancy with minimal local disturbance.

Is it built for full-time, year-round living?

Yes. Designed as a permanent dwelling, it features a robust steel structure, high-performance thermal insulation, and complete residential-grade installations. It meets rigorous standards for comfort and durability in all seasons and climates.

To what extent can the design be personalized?

We offer comprehensive customization. Clients can modify the interior layout, room counts, fixture specifications, and decor packages. Exterior finishes, architectural details, and sustainable upgrades like integrated solar power are also available to match your vision.

How does it support sustainable living?

The modular construction process significantly reduces on-site waste and embodied carbon. Its relocatable nature promotes resource efficiency and land flexibility, offering a lower-environmental-impact alternative to traditional construction while maintaining uncompromising quality.

What makes this a compelling property solution?

It represents a fusion of innovation and luxury: swift deployment, enduring quality, and adaptable utility. Whether as a primary home, hospitality venue, workspace, or hybrid-use property, it provides a forward-thinking, premium, and versatile answer to contemporary living and investment needs.



Suzhou Stars Integrated Housing Co., Ltd.



+8615228076365



sales@szstarhouse.com



prefabricated-containerhouses.com

NO.1 ZHUJIABANG VILLIAGE.ZHENZE TOWN,WUJANG,SUZHOU,CHINA

