



## Fast Assembly Eco-Friendly Expandable Container House with Versatile Design for Modern Living

### Our Product Introduction

for more products please visit us on [prefabricated-containerhouses.com](http://prefabricated-containerhouses.com)

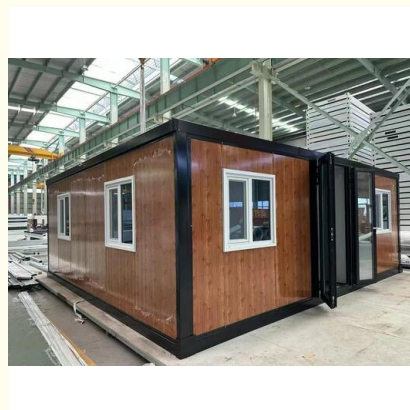
#### Basic Information

- Place of Origin: china
- Brand Name: INFINITE STARS
- Certification: CE, ISO9001, ISO45001, ISO14001
- Minimum Order Quantity: 7 Sets
- Delivery Time: 5-8 work days
- Payment Terms: L/C, D/A, D/P, T/T, Western Union, MoneyGram
- Supply Ability: 2000 Sets PER Month



#### Product Specification

- Name: Expandable Container House
- Standard: AISI, ASTM, BS, DIN, GB, JIS
- Structure: Q235B, Q345B Or Other Requested
- Open Size: 6300x5850x2500mm
- Closed Size: 2250x5850x2500mm
- Floor: 15mm Fiber Cement Board
- Window: W1130\*H1100mm With Main And Subframe
- Window Of Bathroom: W400\*H600mm Without Screen
- Door: W1520\*H2200mm Aluminum Sliding Door
- Wall Panel: 50mm EPS/Mineral Wool/Glass Wool Sandwich Panel
- Application: Office/Hotel/Resort/School/Living House/Store/Shop/Stadium/Shopping Mall/Warehouse/Workshop/Hospital/Plant
- Tolerance:  $\pm 1\%$
- Processing Service: Bending, WELDING, Decoiling, Cutting,



#### More Images



## Product Description

### Expandable Container House: Fast, Affordable & Green Home Solution

Tired of slow, expensive, and wasteful traditional construction methods? Our expandable prefab house offers a modern alternative: a versatile, durable home built in weeks, not months.

#### Superior Construction Efficiency

The core strength of our expandable container house lies in its exceptional efficiency. Most construction occurs in a controlled factory environment, significantly reducing on-site time and labor costs while ensuring consistent quality.

#### Durable & Long-Lasting Build

Constructed with a robust steel frame and high-quality sandwich panels, this portable house is engineered for durability and built to withstand the test of time, making it a smart long-term investment.

#### Eco-Conscious Design

This is an intelligent choice for environmentally conscious homeowners. The design promotes sustainability by repurposing industrial materials and minimizing construction waste. Excellent insulation properties and compatibility with solar panels help reduce long-term energy consumption and environmental impact.

#### Maximum Flexibility & Versatility

The innovative design transforms from a compact, easily transportable unit into a spacious living area. Perfect for various applications including:

- Cozy backyard studios and guest houses
- Mobile offices and workspaces
- Pop-up retail shops and commercial spaces
- Modular family homes through stacking multiple units
- Emergency shelters and temporary housing solutions

Applications span across residential, commercial, hospitality, and emergency shelter needs, providing adaptable solutions for diverse requirements.

### Ready for a Simpler, Smarter Way to Build?

The expandable container house combines speed, value, and sustainability in one practical, future-ready solution. Discover the possibilities and create the space you need today.



Suzhou Stars Integrated Housing Co., Ltd.



+8615228076365



[sales@szstarhouse.com](mailto:sales@szstarhouse.com)



[prefabricated-containerhouses.com](http://prefabricated-containerhouses.com)

