



## Space-Saving Instant Building Solution with Durable Steel Frame Expandable Container House and Prefabricated Container Home

### Our Product Introduction

for more products please visit us on [prefabricated-containerhouses.com](http://prefabricated-containerhouses.com)

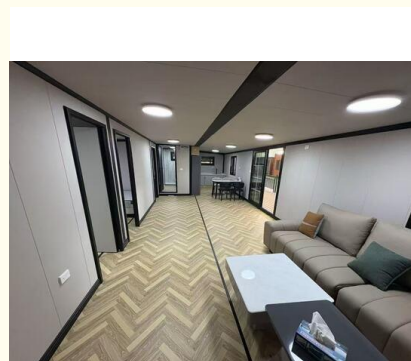
#### Basic Information

- Place of Origin: china
- Brand Name: INFINITE STARS
- Certification: CE,ISO9001,ISO45001,ISO14001
- Minimum Order Quantity: 7 Sets
- Delivery Time: 5-30 work days
- Payment Terms: L/C,D/A,D/P,T/T,Western Union,MoneyGram
- Supply Ability: 2000 Sets PER Month

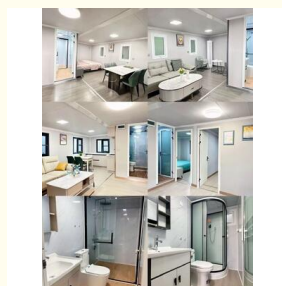
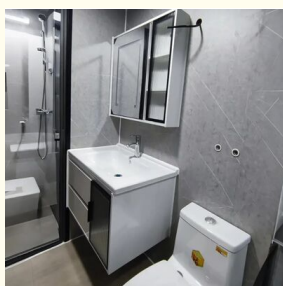
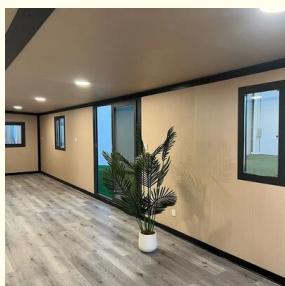


#### Product Specification

- Name: Expandable Container House
- Standard: AISI, ASTM, BS, DIN, GB, JIS
- Structure: Q235B, Q345B Or Other Requested
- Open Size: 6300x5850x2500mm
- Closed Size: 2250x5850x2500mm
- Floor: 15mm Fiber Cement Board
- Window: W1130\*H1100mm With Main And Subframe
- Window Of Bathroom: W400\*H600mm Without Screen
- Door: W1520\*H2200mm Aluminum Sliding Door
- Wall Panel: 50mm EPS/Mineral Wool/Glass Wool Sandwich Panel
- Application: Office/Hotel/Resort/School/Living House/Store/Shop/Stadium/Shopping Mall/Warehouse/Workshop/Hospital/Plant
- Tolerance:  $\pm 1\%$
- Processing Service: Bending, WELDING, Decoiling, Cutting,



#### More Images



## Product Description

### Space-Saving Instant Building Solution

Imagine a building that ships compactly on a truck and unfolds into a fully usable space on-site in hours. This modern expandable container house delivers exactly that functionality.

The innovative design transforms from a closed size of 2250\*5850\*2500mm to a spacious open size of 6300\*5850\*2500mm, providing a rapid and cost-effective alternative to traditional construction methods. Built with a durable steel frame and insulated sandwich panels, it's engineered for comfort and long-term performance across various climates.

### Versatile Applications

This adaptable unit serves multiple purposes with exceptional performance:

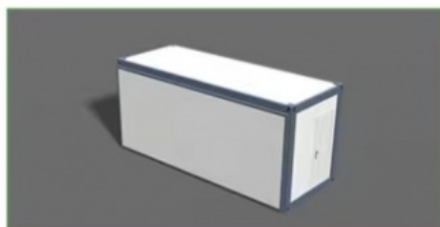
**Modern Living Spaces:** Affordable housing, cozy vacation cabins, or guest units

**Commercial Solutions:** Instant offices, retail pop-up shops, or site accommodation

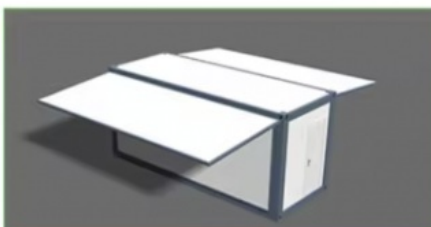
**Critical Facilities:** Mobile clinics, classrooms, or emergency shelters

### Customization Options

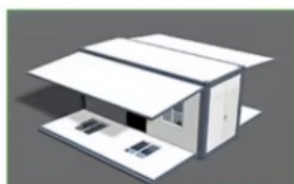
Ready for personalization, you can modify the layout, finishes, and incorporate eco-friendly features like solar power systems. Manufactured to meet international standards, this represents a reliable, scalable solution for intelligent projects worldwide.



Flat Pack Packing



Roof Installation



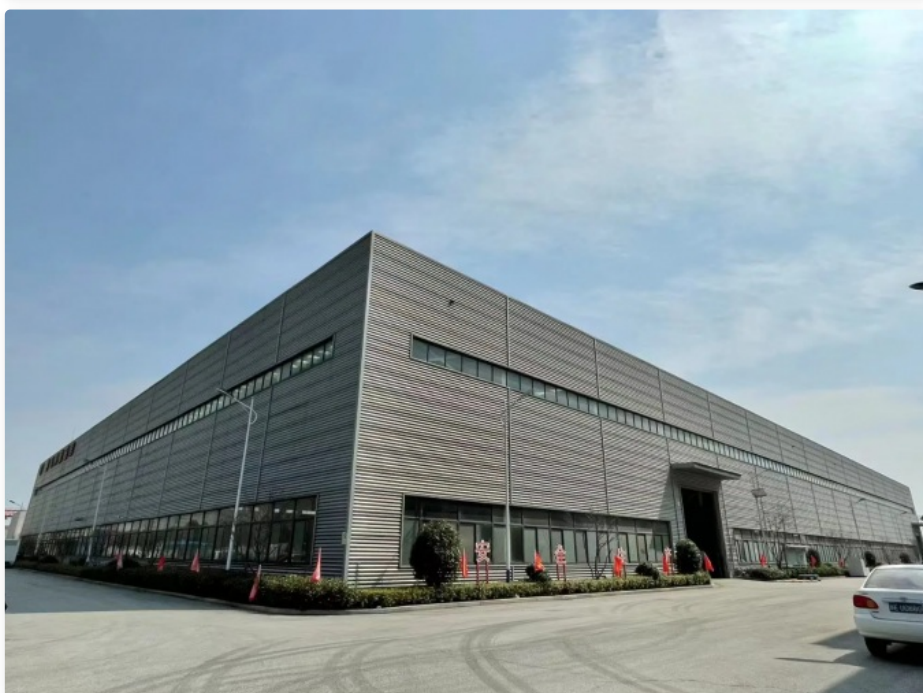
Floor Installation



Wall Installation



Expandable House Finished





**Suzhou Stars Integrated Housing Co., Ltd.**



+8615228076365



sales@szstarhouse.com



prefabricated-containerhouses.com

NO.1 ZHUJIABANG VILLIAGE.ZHENZE TOWN,WUJANG,SUZHOU,CHINA