



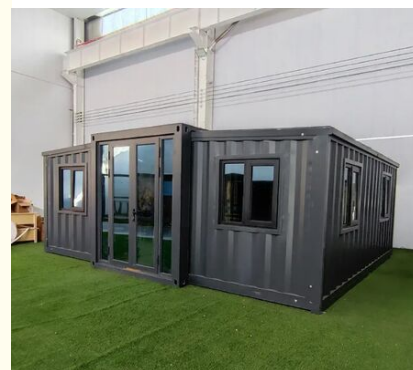
Expandable Container House with Q235B/Q345B Steel Frames, 15mm Fiber Cement Floor, and 15+ Year Lifespan

Our Product Introduction

for more products please visit us on prefabricated-containerhouses.com

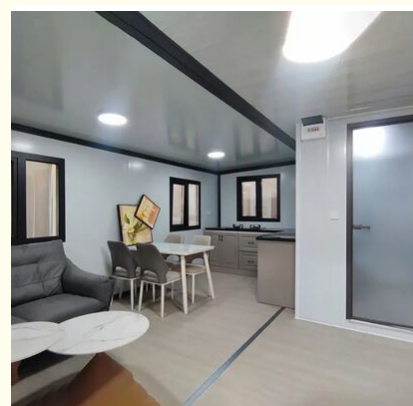
Basic Information

- Place of Origin: china
- Brand Name: INFINITE STARS
- Certification: CE, ISO9001, ISO45001, ISO14001
- Minimum Order Quantity: 7 Sets
- Delivery Time: 5-30 work days
- Payment Terms: L/C, D/P, D/A, T/T, Western Union, MoneyGram
- Supply Ability: 2000 Sets PER Month

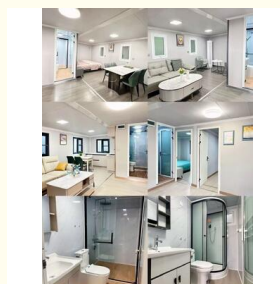
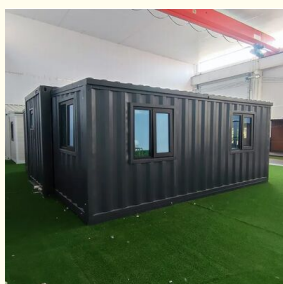
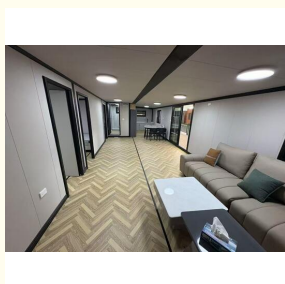


Product Specification

- Name: Expandable Container House
- Standard: AISI, ASTM, BS, DIN, GB, JIS
- Structure: Q235B, Q345B Or Other Requested
- Open Size: 6300x5850x2500mm
- Closed Size: 2250x5850x2500mm
- Floor: 15mm Fiber Cement Board
- Window: W1130*H1100mm With Main And Subframe
- Window Of Bathroom: W400*H600mm Without Screen
- Door: W1520*H2200mm Aluminum Sliding Door
- Wall Panel: 50mm EPS/Mineral Wool/Glass Wool Sandwich Panel
- Application: Office/Hotel/Resort/School/Living House/Store/Shop/Stadium/Shopping Mall/Warehouse/Workshop/Hospital/Plant
- Tolerance: $\pm 1\%$
- Processing Service: Bending, WELDING, Decoiling, Cutting,



More Images



Product Description

Need a Flexible, Modern Living Space?

Explore the Expandable M-Modular Container Home

Looking for a home that grows with your needs? The M-Modular Expandable Container Home is a versatile and smart solution, perfectly designed for modern living, creative work, or a seamless combination of both.

Built from durable, repurposed shipping containers, it offers a strong, sustainable foundation that is both cost-effective and eco-friendly.

Unmatched Flexibility and Expandability

The core advantage is incredible flexibility. Start with a single, compact unit and expand horizontally by adding more container modules whenever you need extra space.

- Add modules for new bedrooms, home offices, or private studios

- Create full workshop spaces as needed

- Modular design provides unmatched long-term value and personalization

Efficient Prefabricated Construction

The home is largely prefabricated off-site, ensuring faster, cleaner, and more efficient construction with less waste and disruption compared to traditional building methods.

Comfort and Modern Amenities

Inside, the space is designed for comfort and efficiency with modern features:

- Advanced insulation systems

- Energy-efficient windows

- Essential amenities including kitchenette and bathroom

- Thoughtful layouts that maximize natural light

- Seamless connection to outdoor decks

This design beautifully blends indoor and outdoor living, creating an ideal, future-ready choice for anyone seeking an affordable, sustainable, and adaptable living or working environment.





Suzhou Stars Integrated Housing Co., Ltd.



+8615228076365



sales@szstarhouse.com



prefabricated-containerhouses.com

NO.1 ZHUJIABANG VILLIAGE.ZHENZE TOWN,WUJANG,SUZHOU,CHINA