



Multi Functional Emergency Housing Portable Steel Expandable House With Durable Steel Structure

Our Product Introduction

for more products please visit us on prefabricated-containerhouses.com

Basic Information

- Place of Origin: china
- Brand Name: INFINITE STARS
- Certification: CE,ISO9001,ISO45001,ISO14001
- Minimum Order Quantity: 7 Sets
- Payment Terms: MoneyGram,Western Union,T/T,D/P,L/C,D/A
- Supply Ability: 2000 Sets PER Month

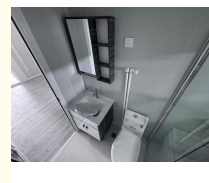
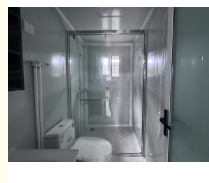
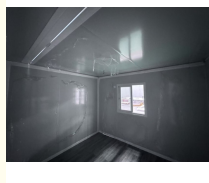
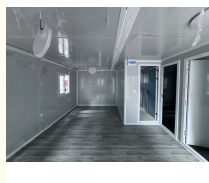


Product Specification

- Quick-Assembly Design: Modular Components Enable Rapid On-site Installation Without Heavy Machinery
- Robust Steel Structure: Fully Welded Steel Frame Ensures High Strength, Durability, And Superior Seismic/anti-deformation Performance
- Thermal & Acoustic Insulation: Walls Constructed With Color Steel Sandwich Panels Provide Effective Heat Preservation, Soundproofing, And Weather Resistance
- Weatherproof & Corrosion-Resistant: Treated Materials Withstand Harsh Environments (humidity, Acid, Alkali, Salt Fog) For Long-term Use
- Multi-Functional Applications: Ideal For Site Offices, Guard Booths, Living Quarters, Modular Hotels, Schools, And Emergency Housing
- Highlight: Portable Steel Expandable House Wholesale, Durable Portable Steel Expandable House, Portable Steel Structure Expandable House



More Images



Product Description

Key Features

- Expandable Design:** Double-wing folding structure increases usable space by 50%
- Durable Materials:** Steel frame with 50-100mm EPS/glass wool/rock wool sandwich panels for superior insulation
- Weather Resistance:** Sealed joints and galvanized steel roofing withstand extreme climates
- Eco-Friendly:** Recyclable materials and energy-efficient thermal performance
- Customizable:** Multiple layouts (1-3 bedrooms, office, bathroom) and exterior finishes (PVC, stone paint)

Why Choose Our Product

- Rapid Deployment:** Pre-engineered components enable 2-4 hour installation
- Cost-Effective:** 30% lower construction costs vs traditional buildings
- Versatile Applications:** Ideal for residential, commercial, and industrial use (camping sites, construction offices, emergency shelters)
- Structural Integrity:** Meets international safety standards with 20-year durability
- Smart Integration:** Pre-wired electrical systems and optional IoT-enabled monitoring

Technical Specifications

Parameter	Standard Model

more products please visit us on prefabricated-containerhouses.com

Parameter	Standard Model
Dimensions (L×W×H)	6m×2.9m×2.9m
Wall Thickness	100mm fire-resistant panels
Roof Load Capacity	2.0 kN/m²
Insulation R-value	3.8-4.2
Weight	2.8-3.5 tons

Frequently Asked Questions

- Q1: What's the installation process?**
A: Our engineers provide detailed manuals and videos. Basic tools required - no special equipment needed
- Q2: Can I expand the structure later?**
A: Yes! Modular design allows vertical stacking (max 3 floors) and horizontal extensions
- Q3: How does insulation perform in extreme temperatures?**
A: Internal temperatures remain stable within ±8°C of set points in -30°C to 50°C environments
- Q4: What certifications do you have?**
A: ISO9001, CE, and BV inspection approved. Fire rating up to Class A2
- Q5: What's the warranty period?**
A: 5 years structural, 3 years electrical components. Lifetime technical support available



Suzhou Stars Integrated Housing Co., Ltd.



+8615228076365



sales@szstarhouse.com



prefabricated-containerhouses.com

NO.1 ZHUJIABANG VILLIAGE,ZHENZE TOWN,WUJANG,SUZHOU,CHINA