



Expandable Container House Portable Modular Shelter for Outdoor & Emergency Use

Our Product Introduction

for more products please visit us on prefabricated-containerhouses.com

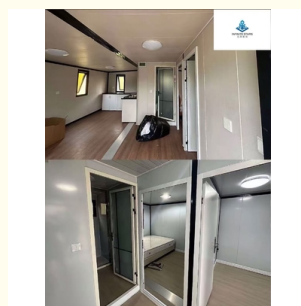
Basic Information

- Place of Origin: china
- Brand Name: INFINITE STARS
- Certification: CE,ISO9001,ISO45001,ISO14001
- Minimum Order Quantity: 7 Sets
- Delivery Time: 3-7 work days
- Payment Terms: D/A,L/C,D/P,T/T,Western Union,MoneyGram
- Supply Ability: 2000 Sets PER Month



Product Specification

- Premium Insulation: Premium Insulation: Fireproof Rock Wool Panels+Color Steel Plate
- Glamping Resorts: Turnkey Solutions For Hillside/forest/lakeside
- Pop-Up Hospitality: Mobile Cafes, VIP Lounges, Or Wedding Venues
- Compliance: CE/Eurocode Certified For EU/NA Markets
- Product Name: EXPANDABLE CONTAINER HOUSE
- Jiangsu Craftsmanship: Precision Engineering From SuZhou WuJiang Cluster
- Key Features: Space Expansion Mechanism: Double-wing Folding System
- Cost Efficiency: 30% Cheaper Than Traditional Builds



More Images



Product Description

Expandable Container House | Modular Housing Solutions by Suzhou Manufacturer

Product Features & Highlights

Expandable Design: Increases usable space by 66% when unfolded, ideal for temporary housing, offices, monitoring stations, or rural residences.

Modular & Portable: Prefabricated components enable rapid assembly (7-day installation proven).

Customizable Layouts: Optional add-ons (AC, electrical systems, furniture) for tailored functionality.

Key Advantages

Cost-Efficient: 30-50% cheaper than traditional buildings.

Eco-Friendly: Zero construction waste, reusable materials.

Versatile Applications: Suitable for construction sites, tourism hubs, emergency shelters, or commercial use.

Technical Parameters

Model	Expanded Size (L×W×H)	Weight
Standard-20	6.0m×2.4m×2.6m	2,800kg
Double-Layer	Customizable	4,500kg

FAQ

Q: How long does installation take?

A: 3-7 days with bolt-connected structures for stability.

Q: Can it withstand extreme climates?

A: Yes, tested for -20°C to 50°C conditions.

Q: Is a foundation required?

A: Optional—gravel pads or concrete bases recommended for permanent setups.

Why Choose Us?

As a leading expandable container house manufacturer in **Suzhou, Jiangsu**, we specialize in ISO-certified, customizable solutions with 10+ years of industry expertise. Global delivery & 5-year warranty included.



Suzhou Stars Integrated Housing Co., Ltd.



+8615228076365



sales@szstarhouse.com



prefabricated-containerhouses.com

NO.1 ZHUJIABANG VILLIAGE,ZHENZE TOWN,WUJANG,SUZHOU,CHINA