



Suzhou WuJiang Foldable & Expandable Container House

Our Product Introduction

for more products please visit us on prefabricated-containerhouses.com

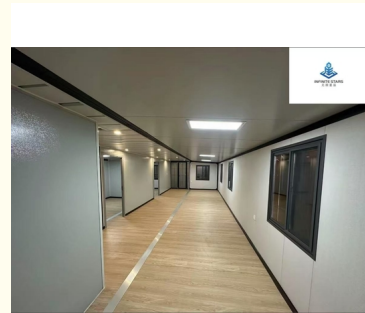
Basic Information

- Place of Origin: china
- Brand Name: INFINITE STARS
- Certification: CE,ISO9001,ISO45001,ISO14001
- Minimum Order Quantity: 7 Sets
- Delivery Time: 3-7 work days
- Payment Terms: L/C,D/A,D/P,T/T,MoneyGram,Western Union

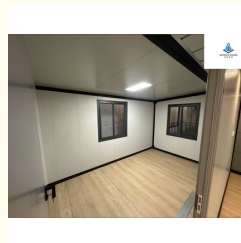
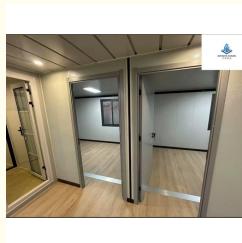


Product Specification

- Product Name: EXPANDABLE CONTAINER HOUSE
- Key Features: Space Expansion Mechanism: Double-wing Folding System
- Premium Insulation: Premium Insulation: Fireproof Rock Wool Panels+Color Steel Plate
- Glamping Resorts: Turnkey Solutions For Hillside/forest/lakeside
- Pop-Up Hospitality: Mobile Cafes, VIP Lounges, Or Wedding Venues
- Compliance: CE/Eurocode Certified For EU/NA Markets
- Jiangsu Craftsmanship: Precision Engineering From SuZhou WuJiang Cluster
- Cost Efficiency: 30% Cheaper Than Traditional Builds



More Images



Product Description

20ft/40ft Expandable Container House | Premium Folding Prefab Solution

Features & Advantages

Space-Smart Design: Doubles living/working space when expanded (5.9m×5.03m→19.3'×16.5' for 20ft; 11.8m×6.47m→38.7'×21.2' for 40ft). Collapses to 0.72m/2.4' thickness for compact transport.

Rapid Installation: Deploys in 30 minutes with pre-installed utilities (water/electricity ports).

Robust Construction: High-tensile galvanized steel frame + 50mm EPS/PU sandwich panels for wind/quake resistance (customizable specs).

Multi-Scene Use: Ideal for site offices, glamping pods, pop-up stores, and emergency shelters.

Our Product

Technical Parameters

Model	20ft Expandable Container	40ft Expandable Container
Expanded Size	5.9m×5.03m×2.5m (19.3'×16.5'×8.2')	11.8m×6.47m×2.53m (38.7'×21.2'×8.3')
Folded Size	5.9m×0.72m×2.5m (19.3'×2.4'×8.2')	11.8m×2.29m×2.53m (38.7'×7.5'×8.3')
Wall/Roof	50mm fireproof EPS/PU core	Same + reinforced joints
Doors/Windows	Aluminum alloy/thermal-break options	Customizable configurations

Why Choose Us?

- ◆ **Suzhou-Based OEM:** 15+ years specializing in expandable container R&D.
- ◆ **Export-Ready:** Foldable units save 60% shipping costs vs. standard containers.
- ◆ **15-Year Lifespan:** 1-year warranty + free replaceable parts.

FAQ

Q: Can I customise layouts?

A: Yes! Our design team tailors floorplans (offices/2-bed units/showrooms) per your CAD/ideas.

Q: Lead time for 100 units?

A: 25–30 days. Automated production lines ensure 98% on-time delivery.

Q: Installation support?

A: Detailed manuals/video guides included. On-site engineer assistance available



Suzhou Stars Integrated Housing Co., Ltd.



+8615228076365



sales@szstarhouse.com



prefabricated-containerhouses.com

NO.1 ZHUJIABANG VILLIAGE.ZHENZE TOWN,WUJANG,SUZHOU,CHINA