



## Foldable Expandable Container House

Our Product Introduction

for more products please visit us on prefabricated-containerhouses.com

### Basic Information

- Place of Origin: china
- Brand Name: INFINITE STARS
- Certification: CE,ISO9001,ISO45001,ISO14001
- Minimum Order Quantity: 7 Sets
- Delivery Time: 3-7 work days
- Payment Terms: L/C,D/A,D/P,T/T,Western Union,MoneyGram
- Supply Ability: 2000 Sets PER Month

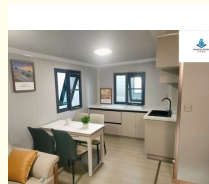


### Product Specification

- Product Name: EXPANDABLE CONTAINER HOUSE
- Key Features: Space Expansion Mechanism: Double-wing Folding System
- Premium Insulation: Premium Insulation: Fireproof Rock Wool Panels+Color Steel Plate
- Glamping Resorts: Turnkey Solutions For Hillside/forest/lakeside
- Pop-Up Hospitality: Mobile Cafes, VIP Lounges, Or Wedding Venues
- Compliance: CE/Eurocode Certified For EU/NA Markets
- Jiangsu Craftsmanship: Precision Engineering From SuZhou WuJiang Cluster
- Cost Efficiency: 30% Cheaper Than Traditional Builds



### More Images



### Product Description

#### Smart Dual-Wing Expandable Container House: Space Revolution for Modern Living

##### Features & Benefits

##### 3x Space Expansion

Our foldable container house transforms from a compact 0.7m-wide transport mode to a spacious 5.9m-wide living/working area instantly. The dual-wing mechanism maximizes space efficiency without compromising structural integrity.

##### Logistics Optimized

Save 67% on shipping: One 40ft HQ container fits **3 units**. Pre-packed components with protective film ensure damage-free global delivery.

##### Rapid Deployment

Install in 5 steps within hours using our video-guided system. Corrosion-resistant steel frame and 50mm EPS/PU sandwich panels (customizable thickness) withstand extreme climates.

##### Multi-Scenario Adaptability

Configurable as offices, classrooms, clinics, or 2-bedroom residences. Optional solar-ready roofs and pre-installed wiring support off-grid needs.

##### Technical Parameters

Item	Specification
Sizes	L5.9/9.0/11.8m x W6.3m x H2.48m
Walls	50mm fire-retardant EPS/PU

more products please visit us on [prefabricated-containerhouses.com](http://prefabricated-containerhouses.com)

Item	Specification
Doors	Steel security door + multi-lock
Windows	PVC/Aluminum (double-glazed optional)
Load	Roof 150kg/m², Floor 300kg/m²

Why Choose Us?

**Jiangsu-Based OEM Expertise:** ISO9001-certified factory with 15+ years in prefab structures

**1-Year Warranty:** Free replacement for structural defects

**Custom Solutions:** Color/floorplan/insulation tailored to your market

FAQ

**Q: Lead time for 100 units?**

A: 35 days with production progress tracking.

**Q: Installation support?**

A: Comprehensive manuals + video tutorials + live chat assistance.

**Q: Lifespan in coastal areas?**

A: 15-20 years with galvanized steel frame and anti-salt spray coating.

**Q: Minimum order quantity?**

A: Contact for flexible MOQ based on design complexity.



Suzhou Stars Integrated Housing Co., Ltd.



+8615228076365



[sales@szstarshouse.com](mailto:sales@szstarshouse.com)



[prefabricated-containerhouses.com](http://prefabricated-containerhouses.com)

NO.1 ZHUJIABANG VILLIAGE.ZHENZE TOWN,WUJANG,SUZHOU,CHINA