



## Foldable Expandable Box House Portable Eco-Friendly Solution for Quick Setup

Our Product Introduction

for more products please visit us on [prefabricated-containerhouses.com](http://prefabricated-containerhouses.com)

### Basic Information

- Place of Origin: china
- Brand Name: INFINITE STARS
- Certification: CE,ISO9001,ISO45001,ISO14001
- Minimum Order Quantity: 7 Sets
- Delivery Time: 3-7 work days
- Payment Terms: ,L/C,D/A,D/P,T/T,MoneyGram,Western Union
- Supply Ability: 2000 Sets PER Month

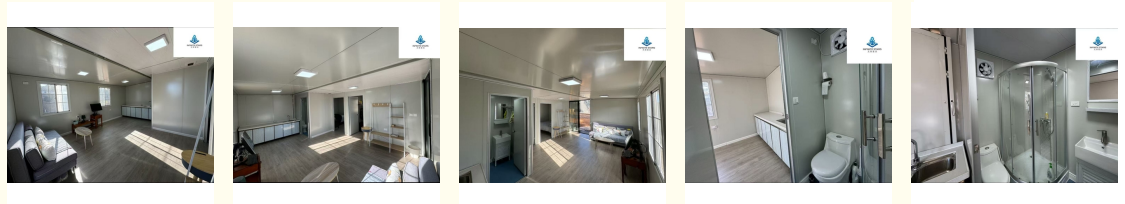


### Product Specification

- Product Name: EXPANDABLE CONTAINER HOUSE
- Key Features: Space Expansion Mechanism: Double-wing Folding System
- Premium Insulation: Premium Insulation: Fireproof Rock Wool Panels+Color Steel Plate
- Glamping Resorts: Turnkey Solutions For Hillside/forest/lakeside
- Pop-Up Hospitality: Mobile Cafes, VIP Lounges, Or Wedding Venues
- Compliance: CE/Eurocode Certified For EU/NA Markets
- Jiangsu Craftsmanship: Precision Engineering From SuZhou WuJiang Cluster
- Cost Efficiency: 30% Cheaper Than Traditional Builds



### More Images



### Product Description

#### Dual-Wing Expandable Container House: Premium Modular Space Solution from Suzhou Manufacturer

Unlock versatile, high-quality space with our **Dual-Wing Expandable Container House** – engineered for durability, rapid deployment, and exceptional comfort. Ideal for remote offices, site accommodations, pop-up stores, or modular homes, our units redefine portable living and working environments.

#### Key Features & Advantages:

**Smart Expandable Design:** Patented dual-wing expansion system dramatically increases interior space upon installation (up to 2x the transport size). Sets up in hours, minimizing labor and disruption.

**Robust & Durable Construction:** Built with high-tensile steel frames and premium sandwich panels (options: fire-retardant rock wool or PU foam core). Customize layouts, windows, doors, electrical systems, interior finishes (flooring, walls, ceilings), and add-ons like HVAC or solar panels.

**Eco-Friendly & Efficient:** Designed for minimal foundation work. High insulation values significantly reduce energy consumption for heating/cooling. Made with recyclable materials.

**Complete Factory Finish:** Fully assembled, wired, and plumbed (if specified) in our ISO-certified Suzhou factory, ensuring consistent quality and faster on-site readiness.

#### Core Parameters:

Feature	Specification

Feature	Specification
Standard Size	20ft / 40ft (Custom sizes available)
Expanded Width	Up to 2x Transport Width
Wall/Roof Panel	50mm/75mm EPS/PU/Rockwool Sandwich Panel
Frame	High-Grade Galvanized Steel
Door/Window	Standard PVC/Aluminum, Optional Double Glazing
Delivery	Folded for efficient transport
Compliance	Meets international structural & safety standards

**Frequently Asked Questions (FAQ):**

**Q: How long does installation take?** A: A single unit can typically be expanded and made weatherproof within 4-8 hours with a small crew.

**Q: Can it withstand extreme weather?** A: Yes. The steel frame and insulated panels provide excellent resistance against wind, snow loads, rain, and offer good thermal performance.

**Q: Are custom layouts possible?** A: Absolutely! We specialize in bespoke designs – offices, dormitories, clinics, classrooms, shops, etc. Contact us with your plans.

**Q: What foundation is required?** A: Simple concrete pads, piers, or compacted gravel bases are usually sufficient due to the integrated steel frame.

**Q: Do you ship internationally?** A: Yes, our foldable design optimizes shipping. We export globally with comprehensive logistics support.

**Choose Innovation & Quality:** As a leading expandable container house manufacturer in Suzhou, China, we combine cutting-edge engineering with stringent quality control. Our units offer a cost-effective, fast, and sustainable alternative to traditional construction.

**Contact us today for a quote and discover the Suzhou advantage in modular building solutions!**



Suzhou Stars Integrated Housing Co., Ltd.



+8615228076365



[sales@szstarshouse.com](mailto:sales@szstarshouse.com)



[prefabricated-containerhouses.com](http://prefabricated-containerhouses.com)

NO.1 ZHUJIABANG VILLIAGE,ZHENZE TOWN,WUJANG,SUZHOU,CHINA