



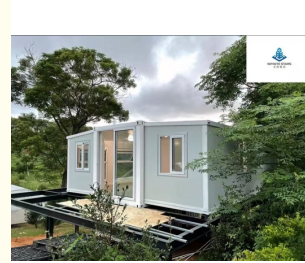
Dual Wing Expandable Prefabricated Container Houses Customizable Layout

Our Product Introduction

for more products please visit us on prefabricated-containerhouses.com

Basic Information

- Place of Origin: CHINA
- Brand Name: INFINITE STARS
- Certification: CE,ISO9001,ISO45001,ISO14001
- Minimum Order Quantity: 7 Sets
- Delivery Time: 2-7 work days
- Payment Terms: T/T,D/P,L/C,D/A,Western Union,MoneyGram
- Supply Ability: 2000 set per month

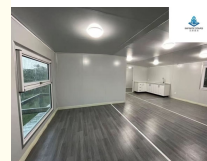
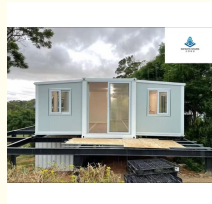


Product Specification

- Name: EXPANDABLE CONTAINER HOUSE
- Expandable Design: Double-wing Structure Increases Usable Space By 200% When Unfolded
- Foldable Structure: Modular Components Allow Collapsed Shipping Dimensions(L5900×W2200×H2480mm)
- Integrated Utilities: Pre-installed Electrical/plumbing Systems With Optional Kitchen & Bathroom Configurations
- CE-Certified Components: Electrical Systems Meet European Conformity Standards
- Galvanized Steel Frame: Q235 Steel Framework With Anti-corrosion Powder Coating
- Customizable Layout: Flexible Interior Spatial Planning For Offices/dorms/medical Units
- Cross-Platform Compatibility: Optimized Specifications For Amazon/Shopify/eBay Logistics
- Highlight: **Dual Wing prefabricated container houses,**



More Images



Product Description

Double-Wing Expandable Container House | Premium Customizable Solution
Suzhou-Based Manufacturer INFINITE STARS | ISO-Certified Production

Product Features & Highlights

Innovative Dual-Wing Design:

Expandable side panels maximize interior space by 40-60%, ideal for offices, retail pop-ups, or multi-room configurations. Reinforced hinges and hydraulic systems ensure smooth expansion/retraction, suitable for frequent relocation.

Robust Construction:

Frame: High-grade Q235 steel with anti-corrosion coatings (epoxy zinc primer + double-layer paint).

Walls: 50/75mm fireproof rock wool board (A1-grade) or glass wool board, offering thermal insulation (R-value ≥ 3.5) and noise reduction (30dB+).

Quick Installation & Mobility:

Prefab modular design reduces on-site assembly time to 2-4 hours.

Forklift-friendly base for easy transportation and stacking.

Customizable Configurations:

Optional add-ons: HVAC systems, solar panels, restroom modules, or smart locks.

Color, window/door layouts, and interior finishes tailored to client needs.

Key Advantages

Space Efficiency: Dual-wing mechanism doubles usable area without increasing transport dimensions.

Durability: 10+ years lifespan under standard conditions, backed by a 5-year structural warranty.

Compliance: Meets GB50009 (structural load) and GB50017 (steel design) standards.

Eco-Friendly: 100% recyclable materials, zero construction waste.

Technical Parameters

Item	Specification
Standard Size (L×W×H)	6058×2438×2890mm (20ft container)
Expanded Size (W)	Up to 4876mm (double wings)
Material Thickness	Wall: 50-75mm; Frame: 1.5-2.5mm
Load Capacity	2.5-3.5 tons (static)
Weight	~2.2 tons (unexpanded)
Door/Window	1 steel door + 2-4 PVC windows

FAQ

Q: How long does installation take?

A: On-site setup requires 2-4 hours with basic tools. Full utilities integration takes 1-2 days.

Q: Can I combine multiple units?

A: Yes! Units are stackable and side-connectable for large-scale projects.

Q: What's the lead time?

A: 7-15 days for standard models; 20-30 days for custom designs.

Q: Is onsite maintenance provided?

A: Global technical support + 24/7 remote troubleshooting.

SEO Keywords: Double-Wing Expandable Container House, Custom Prefab Office Container, Suzhou Manufacturer, Modular Expandable Housing, ISO-Certified Steel Structure

Contact us for OEM/ODM solutions!



Suzhou Stars Integrated Housing Co., Ltd.



+8615228076365



sales@szstarhouse.com



prefabricated-containerhouses.com

NO.1 ZHUJIABANG VILLIAGE,ZHENZE TOWN,WUJANG,SUZHOU,CHINA