



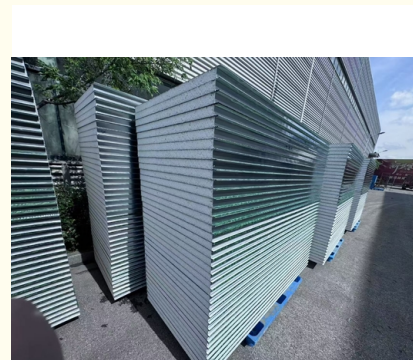
High Load Bearing Grass Pattern Foam Core Construction Fence Panel Weatherproof UV-Protected for Outdoor Durability

Our Product Introduction

for more products please visit us on prefabricated-containerhouses.com

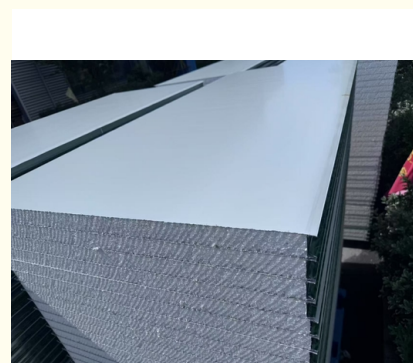
Basic Information

- Place of Origin: china
- Brand Name: INFINTE STARS
- Certification: CE/ISO9001/ISO45001/ISO14001
- Model Number: B

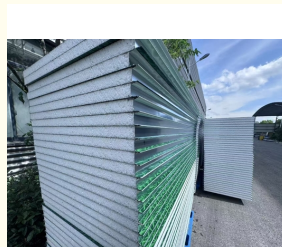
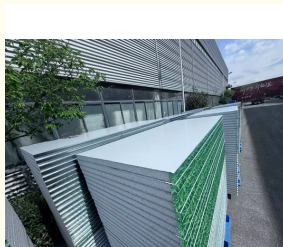
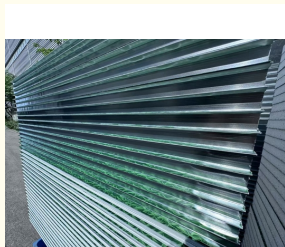


Product Specification

- Panel Size: Customizable Length ($\leq 6000\text{mm}$), Standard Width 950–1150mm, Thickness 50/75/100mm
- Surface Material: Color Steel Sheet
- Thickness: 50mm-200mm
- Faceplates: Pre-painted/galvanized Steel (0.4–1.2mm Thickness)
- Core: High-density Polystyrene Foam (EPS/XPS, 12–18kg/m³) With Fire-retardant Additives (B1/B2 Grade)
- Edge Frame: Reinforced Galvanized Steel Strips (0.2–0.8mm) For Structural Stability
- Fire Resistance: Self-extinguishing Foam Core, Compliant With ASTM E84/EN 13501 610.
- Weatherproof: Corrosion-resistant Coating, UV-protected For Outdoor Durability 1617.
- High Load-Bearing: Reinforced Steel Framework Supports Wind Pressure Up To Level 10 (GB/T 7106) 117.



More Images



Product Description

Grass-Pattern EPS Foam Sandwich Construction Fence Panel

(Ideal for Temporary Site Barriers & Urban Infrastructure Projects)

As a leading foam core panel manufacturer from Zhenze, Wujiang, Suzhou, China, we specialize in producing **lightweight EPS foam sandwich panels** with **natural grass texture design**. Our panels combine 0.3-0.5mm galvanized steel skins with 50-100mm EPS insulation core, achieving exceptional durability (wind resistance up to Level 10) while maintaining only 12-15kg/ weight for easy handling.

Key Features:

Enhanced Safety - Fire-retardant EPS core (Class B1 standard) and anti-rust coating ensure compliance with construction safety regulations.

Weather Resistance - UV-resistant PVDF/polyester coating prevents color fading, suitable for -20°C to +70°C environments.

Quick Installation - Modular design with embedded C-channel steel frames allows tool-free assembly using self-tapping screws.

Aesthetic Appeal - Realistic grass-vein pattern blends with urban landscapes, available in standard green/blue/grey colors.

Typical Applications:

- ✓ Road maintenance barriers (2.5m height recommended)
- ✓ Metro construction site partitions
- ✓ Temporary event venue enclosures
- ✓ Municipal infrastructure projects

Customization Options:

Panel dimensions: 1.8m/2m/2.5m height × 3m length (extendable)

Additional features: Integrated cable slots, spray nozzles for dust control

Our factory holds **ISO 9001** & CE certifications, offering **5-7 day lead time** for standard orders and OEM services for bulk procurement. All panels undergo strict QC inspections including load-bearing tests ($\geq 0.5\text{kN/}$) and waterproof verification.

Why Choose Us?

- ✓ 10+ years expertise in construction insulation materials
- ✓ Cost-effective alternative to traditional PVC/steel barriers
- ✓ Export-ready packaging with corner protectors
- ✓ 2-year quality guarantee with technical support



Suzhou Stars Integrated Housing Co., Ltd.



+8615228076365



sales@szstarhouse.com



prefabricated-containerhouses.com

NO.1 ZHUJIABANG VILLIAGE.ZHENZE TOWN,WUJANG,SUZHOU,CHINA