



Quick Build Modular Container Units Durable Customizable Prefab

Our Product Introduction

for more products please visit us on prefabricated-containerhouses.com

Basic Information

- Place of Origin: CHINA
- Brand Name: INFINITE STARS

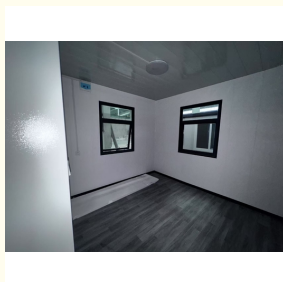
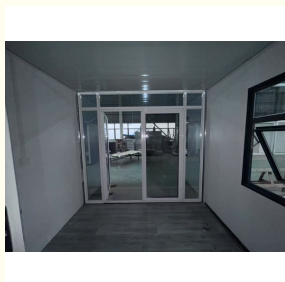


Product Specification

- Use: House, Office, Hotel, Shop, Kiosk
- Size: Customers' Requirement Or 5950*3000*2800mm
- Color: Customized Color, Optional, White&Gray, Any Color, Client's Request
- Door: Aluminum Alloy Door, Steel Door, Security Door, Sandwich Panel Door, Steel Cleanroom Door, etc.
- Product Name: Quick Assembly Prefabricated House, Movable Prefab Modular Foldable Container House For Sale, container House, Luxury Flat Pack 2-story Container House, Standard Prefab Building Fast Duplex Prefabricated Vacation House, Detachable Flat Pack Container House
- Structure: Galvanized Steel Frame, U Steel, Steel, Luxury Container House, light Steel Structure, Dome
- Window: Aluminum Window, PVC Sliding



More Images



Product Description

Here's a professional yet engaging 500-word product description for your Ecer listing, optimized with key selling points from search results:

Premium Modular Fast-Assembly Container Houses - CE Certified Factory Direct Solutions

Globonest presents innovative KuaPinXiang (Fast Assembly Container Units) - the ultimate modular construction solution for temporary housing, site offices, and mobile facilities. Engineered for rapid deployment across global job sites, our units combine military-grade durability with smart space optimization.

Core Advantages:

1 15-20 Year Lifespan

Triple-layer galvanized steel framework + fire-resistant rock wool/PU sandwich panels (0.326-0.46W/m·K thermal efficiency)
7.0-magnitude earthquake resistance & 12-grade typhoon certification

2 Plug-and-Play Efficiency

Pre-fabricated components enable 2-day assembly by 6-person team (20-30 /person/day)
Standard sizes: 6m×3m×2.85m (expandable), custom designs available

3 Global Compliance Ready

CE certified with full export documentation (FCC, CO, CIQ)
Pre-installed electrical systems (lights+switches+European sockets)

Technical Specs:

- ✓ Wall: 50/75/100mm composite panels (EPS/rock wool/PU)
- ✓ Door/Window: Aluminum alloy + double-glazed glass
- ✓ Floor: 18mm anti-slip plywood + vinyl coating
- ✓ Roof: Weatherproof corrugated steel

Ideal For:

- Construction camps ■ Emergency shelters
- Pop-up retail stores ■ Modular hotels
- Remote mining facilities

Why Choose Us?

- 20-year OEM/ODM expertise
- 35-day production lead time
- 1-year warranty + lifetime tech support
- 100% waterproof & corrosion-proof
- OEM branding available

Global Success:

Exported to 60+ countries including EU, Africa, and Southeast Asia. Compatible with Amazon FBA/Shopify logistics requirements .

MOQ & Pricing:



Suzhou Stars Integrated Housing Co., Ltd.



+8615228076365



sales@szstarhouse.com



prefabricated-containerhouses.com

NO.1 ZHUJIABANG VILLIAGE.ZHENZE TOWN,WUJANG,SUZHOU,CHINA