



Portable Little Cozy 20 Foot 20ft Expandable Container House

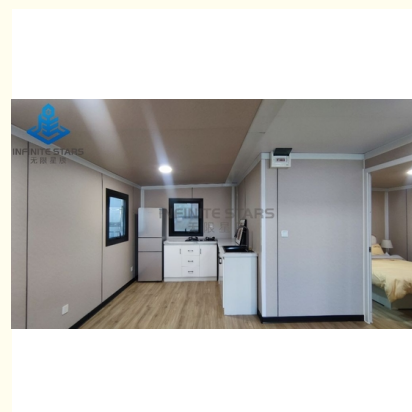
Basic Information

- Place of Origin: CHINA
- Brand Name: INFINITE STARS
- Certification: CE,ISO9001,ISO45001,ISO14001
- Model Number: S06
- Minimum Order Quantity: 1 Sets
- Price: USD 10000~15000/Set
- Packaging Details: 2 units/40hq
- Delivery Time: 15 work days
- Payment Terms: L/C,T/T
- Supply Ability: 100 Sets PER Month

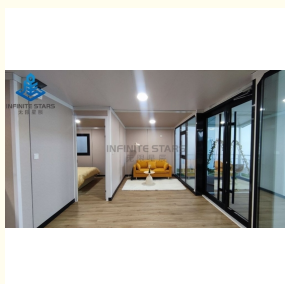


Product Specification

- Size: 20ft/40ft
- Windows: Optional
- Electrical System: Lighting, Outlets, And Circuit Breaker
- Lighting: LED Lights
- Material: Steel
- Locking System: Padlock
- Container: New Or Old
- Corner Fittings: ISO Standard
- Roof: Sandwich Panel+ Decoration Ceiling
- Main Materials: Shipping Container
- Security Features: Locking System, Reinforced Doors
- MOQ: 7 PCS
- Highlight: **Portable Expandable Container House, 20-Foot Expandable Container House, Portable 20ft expandable container house**



More Images



Product Description

Description

If you're looking for a practical and comfortable living space, the 20-foot expansion container is an excellent choice! Its expandable design allows for more flexible space, providing additional living area and comfort as needed. Whether for family living, a vacation cabin, or temporary accommodation, this expansion container meets your needs perfectly. Made from sturdy and durable materials, it can withstand various weather conditions while ensuring privacy and security. Specially designed insulation and waterproof features create a cozy living environment, no matter the heat of summer or the cold of winter.

Moreover, the expandable space can be easily divided according to your personal needs, maximizing the use of every inch. Whether it's a bedroom, living room, small kitchen, or bathroom, everything can be easily planned and arranged. Its design is both minimalist and stylish, blending seamlessly with various lifestyles.

For those looking for a more flexible and economical living solution, the 20-foot expansion container offers the ideal answer. Whether for long-term living or short-term use, it provides a safe, comfortable, and efficient living space.

If you have any questions about this expansion container or need more information, feel free to contact us. We're happy to provide professional assistance and help you create your ideal living environment!





Category	Specification
Container Selection:	<ul style="list-style-type: none"> Standard ISO shipping containers: 20 feet or 40 feet in length. High-quality steel construction with corrugated walls. Wind and watertight condition to ensure structural integrity.
Structural Modifications:	<ul style="list-style-type: none"> Reinforcement of corners and side walls for structural stability. Cutouts for doors, windows, ventilation, and utility access as per design requirements. Welding of additional support beams for load-bearing purposes.
Insulation:	<ul style="list-style-type: none"> Installation of insulation material to regulate temperature and improve energy efficiency. Options include spray foam insulation, rigid foam boards, or mineral wool insulation. Compliance with local climate conditions and insulation standards.
Electrical Wiring:	<ul style="list-style-type: none"> Installation of electrical wiring for lighting, outlets, and appliances. Adherence to electrical codes and safety standards. Placement of electrical panels and junction boxes in accessible locations.
Plumbing:	<ul style="list-style-type: none"> Installation of plumbing systems for sinks, toilets, showers, and other fixtures. Use of durable piping materials suitable for the intended application. Proper drainage and venting to prevent water damage and odors.

HVAC Systems:	<ul style="list-style-type: none"> Provision for heating, ventilation, and air conditioning (HVAC) systems. Selection of HVAC units based on container size and intended use. Placement of vents and ductwork for optimal airflow and climate control.
Doors and Windows:	<ul style="list-style-type: none"> Installation of commercial-grade doors and windows for security and functionality. Sealing of openings to maintain weatherproofing and insulation. Consideration of customer preferences for style and placement.
Safety Features:	<ul style="list-style-type: none"> Implementation of safety features including fire extinguishers, smoke detectors, and emergency exits. Compliance with building codes and regulations regarding occupancy and egress. Provision for security measures such as locks, alarms, and surveillance systems.
Quality Assurance and Testing:	<ul style="list-style-type: none"> Inspection of all modifications and installations to ensure compliance with specifications. Testing of electrical, plumbing, and HVAC systems for functionality and safety. Documentation of workmanship and materials for quality control purposes.

Company introduction

As a wholly-owned subsidiary of Wujiang Saima (established in 2005), Suzhou Stars Integrated Housing Co., Ltd. focuses on foreign trade. As one of the most professional prefabricated house manufacturers in south-east China, we provide customers with all kinds of integrated housing solutions.

Equipped with complete production lines, including sandwich panel production machines and steel structure production line, with 5000 square meter workshop and professional staff, we already built long-term business with domestic giants like CSCEC and CREC. Also, based on our export experience in the past years, we are furthering our steps to global customers with best product and service.

As a supplier to overseas customers all over the world, we are very familiar with the manufacturing standards of various countries, such as European standards, American standards, Australian standards, and so on. We have also participated in the construction of many large-scale projects, such as recent 2022 Qatar World Cup camping construction.

Company photo



Workshop



Storage and shipping

XXXX



Suzhou Stars Integrated Housing Co., Ltd.



+8615228076365



sales@szstarhouse.com



prefabricated-containerhouses.com

NO.1 ZHUJIABANG VILLIAGE.ZHENZE TOWN,WUJANG,SUZHOU,CHINA