



## Personalized Color Steel Roof Tile Waterproof And Heat Insulation 831

Our Product Introduction

for more products please visit us on [prefabricated-containerhouses.com](http://prefabricated-containerhouses.com)

### Basic Information

- Place of Origin: china
- Brand Name: INFINTE STARS
- Certification: CE/ISO9001/ISO45001/ISO14001
- Model Number: B
- Minimum Order Quantity: 7 Sets
- Packaging Details: Each 40 foot high cabinet can hold 1200 square meters
- Payment Terms: L/C, T/T
- Supply Ability: 100000 /day

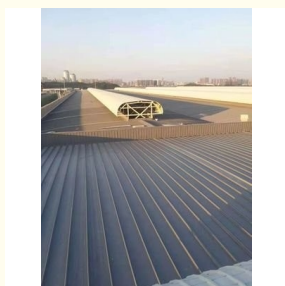


### Product Specification

- Application: Roofing, Wall Cladding, Partition Wall, Cold Storage, Etc.
- Color: Customized
- Surface Treatment: PE/PVDF Coating
- Width: 1000mm
- Length: Customized
- Water Absorption:  $\leq 2\%$
- Thickness: 50mm
- Material: Color Steel
- Load Bearing Capacity:  $\geq 0.5\text{kN/m}^2$
- Thermal Conductivity: 0.022 W/mK
- MOQ: 7 PCS
- Highlight: **Personalized Color Steel Roof Tile,  
Color Steel Roof Tile Heat Insulation,  
Color Steel Roof Tile Waterproof**



### More Images



## Product Description

### Resin Tile Color Steel Tile Waterproof And Heat Insulation 831 Personalized

Color Steel Roofing Panels are a robust and elegant choice for roofing projects. Engineered from top-quality steel alloy, these panels exhibit exceptional strength and resilience, making them suitable for a wide range of applications. Their sleek, modern design and range of color options allow for seamless integration into any architectural style. The panels' coating provides superior protection against corrosion, UV rays, and harsh weather conditions, ensuring long-lasting durability and performance. With their lightweight yet sturdy construction, Color Steel Roofing Panels offer quick and efficient installation, reducing project timelines and labor costs. Whether for a residential home or a commercial building, these panels deliver exceptional value and peace of mind for any roofing project.

Specification	Description
<b>Material</b>	High-grade steel alloy with corrosion-resistant coating
<b>Colors</b>	Available in a wide range of standard and custom colors
<b>Finish</b>	Smooth, matte, or textured finishes available
<b>Thickness</b>	0.4mm to 0.8mm (customizable)
<b>Width</b>	Standard widths of 1000mm, 1200mm, and 1500mm (customizable)
<b>Length</b>	Panels can be cut to specific lengths upon request
<b>Coating Type</b>	Polyester, PVDF, or other advanced coatings for superior durability
<b>Fire Rating</b>	Meets or exceeds local fire rating standards
<b>Wind Resistance</b>	Classified for various wind load ratings (depending on thickness and installation)
<b>Thermal Resistance</b>	Reflects heat, reducing solar absorption and keeping buildings cooler
<b>UV Resistance</b>	Coating provides excellent UV protection for long-lasting color
<b>Installation</b>	Panels are designed for easy installation with overlapping or side-lap joints
<b>Accessories</b>	Includes clips, fasteners, and other accessories for secure installation
<b>Warranty</b>	Standard warranty of 10-20 years, depending on coating and usage

### Energy Efficiency

Our color steel roofing panels are designed to reflect heat, reducing the amount of solar energy absorbed by your roof. This not only helps keep your building cooler in the summer, but it also reduces the need for energy-intensive cooling systems. Over time, this can lead to significant savings on your energy bills.

### **Ease of Installation**

The lightweight and flexible design of our color steel roofing panels makes installation quick and efficient. This minimizes construction time and costs, while ensuring a smooth, secure fit on your roof. Our roofing panels are also easy to maintain, requiring minimal upkeep over their lifetime.

### **Cost-Effective**

When considering the long-term durability, energy efficiency, and low maintenance requirements of our color steel roofing panels, they offer an excellent value for money. While the initial investment may be higher than some traditional roofing materials, the savings you'll see in energy bills and maintenance costs will quickly offset this.

In conclusion, our Color Steel Roofing Panels are the perfect choice for any roofing project. They offer unmatched durability, versatility, energy efficiency, and cost-effectiveness. Contact us today to learn more about how our color steel roofing panels can enhance your building and provide years of reliable protection.

### **Company introduction**

As a wholly-owned subsidiary of Wujiang Saima (established in 2005), Suzhou Stars Integrated Housing Co., Ltd. focuses on foreign trade. As one of the most professional prefabricated house manufacturers in south-east China, we provide customers with all kinds of integrated housing solutions.

Equipped with complete production lines, including sandwich panel production machines and steel structure production line, with 5000 square meter workshop and professional staff, we already built long-term business with domestic giants like CSCEC and CREC. Also, based on our export experience in the past years, we are furthering our steps to global customers with best product and service.

As a supplier to overseas customers all over the world, we are very familiar with the manufacturing standards of various countries, such as European standards, American standards, Australian standards, and so on. We have also participated in the construction of many large-scale projects, such as recent 2022 Qatar World Cup camping construction.

### **Company photo**



### **Workshop**





**Suzhou Stars Integrated Housing Co., Ltd.**



+8615228076365



sales@szstarhouse.com



prefabricated-containerhouses.com

NO.1 ZHUJIABANG VILLIAGE.ZHENZE TOWN,WUJANG,SUZHOU,CHINA