



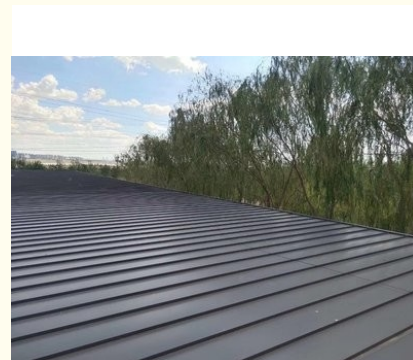
Customized Color Steel Tile Modular Roof Tile Resin Roof Tiles

Our Product Introduction

for more products please visit us on prefabricated-containerhouses.com

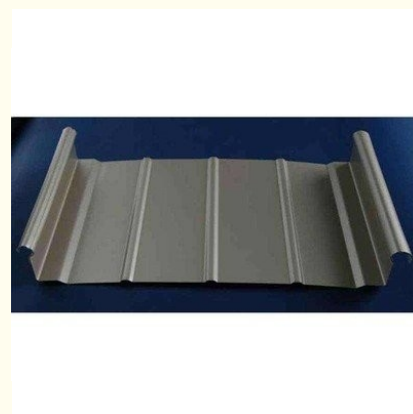
Basic Information

- Place of Origin: china
- Brand Name: INFINITE STARS
- Certification: CE/ISO9001/ISO45001/ISO14001
- Model Number: B
- Minimum Order Quantity: 7 Sets
- Packaging Details: Each 40 foot high cabinet can hold 1200 square meters
- Payment Terms: L/C, T/T
- Supply Ability: 100000 /day



Product Specification

- Color: Customized
- Surface Treatment: PE/PVDF Coating
- Width: 1000mm
- Length: Customized
- Water Absorption: $\leq 2\%$
- Thickness: 50mm
- Sound Insulation: $\geq 30\text{dB}$
- Material: Color Steel
- Load Bearing Capacity: $\geq 0.5\text{kN/m}^2$
- Model: HW-SP-001
- Thermal Conductivity: 0.022 W/mK
- MOQ: 7 PCS
- Highlight: Customized Color Steel Tile,
Modular Resin Roof Tiles,
50mm Modular Roof Tile



More Images



Product Description

Color Steel Tile Resin Tile Roof Tile Antique Tile Modular Plate Roof

Color Steel Roofing Panels are renowned for their exceptional performance and unique styling. Crafted from premium-grade steel, these panels exhibit remarkable strength and rigidity, able to withstand the toughest of weather conditions. Their rich, vibrant colors and textured finishes lend a touch of elegance and sophistication to any roofing project. The panels' corrosion-resistant coating ensures long-lasting durability and protection, while their energy-efficient properties help reduce heating and cooling costs. Additionally, Color Steel Roofing Panels are lightweight yet incredibly sturdy, making installation a breeze and ensuring a secure, leak-free roof. Whether you're looking for a traditional or contemporary roofing solution, Color Steel Roofing Panels offer the perfect blend of style, durability, and functionality.

Specification	Description
Material	High-grade steel alloy with corrosion-resistant coating
Colors	Available in a wide range of standard and custom colors
Finish	Smooth, matte, or textured finishes available
Thickness	0.4mm to 0.8mm (customizable)
Width	Standard widths of 1000mm, 1200mm, and 1500mm (customizable)
Length	Panels can be cut to specific lengths upon request
Coating Type	Polyester, PVDF, or other advanced coatings for superior durability
Fire Rating	Meets or exceeds local fire rating standards
Wind Resistance	Classified for various wind load ratings (depending on thickness and installation)
Thermal Resistance	Reflects heat, reducing solar absorption and keeping buildings cooler
UV Resistance	Coating provides excellent UV protection for long-lasting color
Installation	Panels are designed for easy installation with overlapping or side-lap joints
Accessories	Includes clips, fasteners, and other accessories for secure installation
Warranty	Standard warranty of 10-20 years, depending on coating and usage

Company introduction

As a wholly-owned subsidiary of Wujiang Saima (established in 2005), Suzhou Stars Integrated Housing Co., Ltd. focuses on foreign trade. As one of the most professional prefabricated house manufacturers in south-east China, we provide customers with all kinds of integrated housing solutions.

Equipped with complete production lines, including sandwich panel production machines and steel structure production line, with 5000 square meter workshop and professional staff, we already built long-term business with domestic giants like CSCEC and CREC. Also, based on our export experience in the past years, we are furthering our steps to global customers with best product and service.

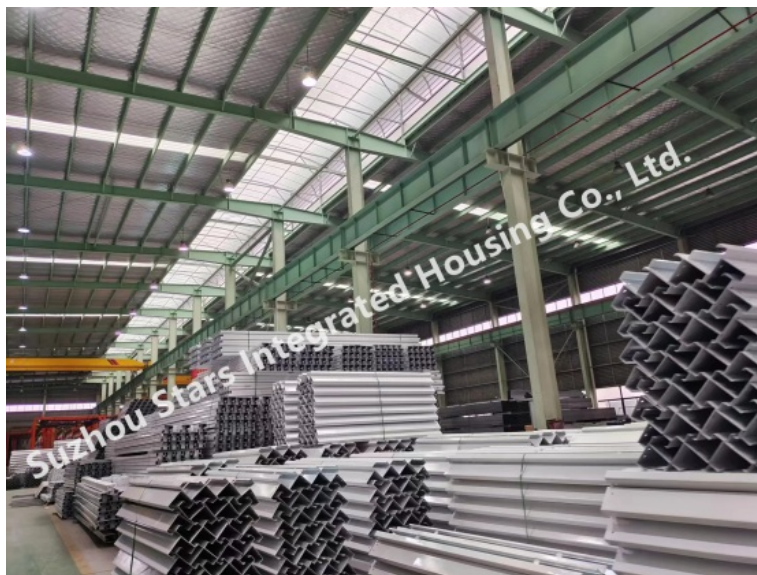
As a supplier to overseas customers all over the world, we are very familiar with the manufacturing standards of various countries, such as European standards, American standards, Australian standards, and so on. We have also participated in the construction of many large-scale projects, such as recent 2022 Qatar World Cup camping construction.

Company photo



Workshop





Suzhou Stars Integrated Housing Co., Ltd.

+8615228076365

sales@szstarhouse.com

prefabricated-containerhouses.com

NO.1 ZHUJIABANG VILLIAGE.ZHENZE TOWN,WUJANG,SUZHOU,CHINA