



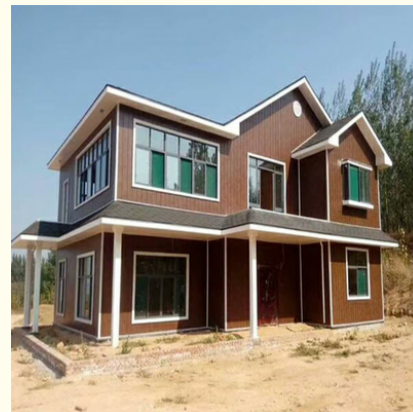
## Light Steel Frame Structure Prefab House Villa Free Design Quick Assembly

Our Product Introduction

for more products please visit us on [prefabricated-containerhouses.com](http://prefabricated-containerhouses.com)

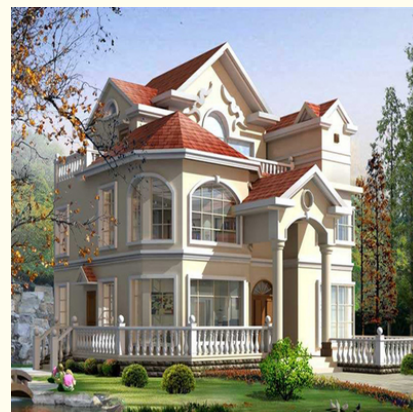
### Basic Information

- Brand Name: Infinite stars
- Certification: CE/ISO9001/ISO45001/ISO14001
- Minimum Order Quantity: 7 Sets
- Delivery Time: 15-25 work day
- Payment Terms: L/C, D/A, D/P, T/T
- Supply Ability: 20000M2 per month

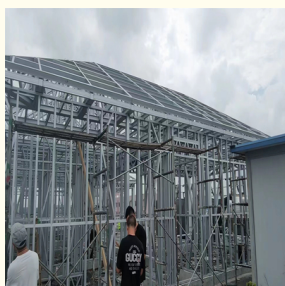


### Product Specification

- Electric: Ceiling Lights, Electric Wire, Socket
- Durability: 50+ Years
- Material: Light Steel
- Application: Living Room
- Floor: Cement-fibre Board+PVC Floor
- Window: Aluminum Window,
- MOQ: 7 PCS
- Highlight: **Light Steel Prefab House Villa,  
Structure Prefab House Villa,  
Prefab House Villa Free Design**



### More Images



## Product Description

### Free Design Luxury Prefabricated Light Steel Frame Structure Prefab House Villa

**This product is customized, please contact sales for specific prices.**

At the heart of a light steel villa lies its structural system, which is predominantly composed of cold-formed hot-dip galvanized steel. This steel framework offers exceptional strength and durability while being remarkably lightweight, facilitating swift and efficient construction processes. Paired with advanced building materials such as color-coated steel sandwich panels and insulated rock wool panels, light steel villas boast superior structural integrity and insulation properties.

#### Features and Benefits:

##### 1. Structural Design:

Light steel villas are engineered using prefabricated steel frames, which are assembled on-site with precision and efficiency. This construction method allows for greater flexibility in design, enabling architects to create unique and customizable living spaces. Whether it's a sleek contemporary design or a traditional aesthetic, light steel villas can be tailored to reflect the preferences of homeowners.

##### 2. Sustainable Materials:

One of the key advantages of light steel villas is their eco-friendly nature. The use of steel, a highly recyclable material, reduces the environmental impact associated with construction. Additionally, the lightweight nature of steel frames minimizes the need for heavy machinery during installation, further lowering carbon emissions. With sustainability at the forefront, light steel villas offer a greener alternative to traditional housing.

##### 3. Energy Efficiency:

Light steel villas are designed with energy efficiency in mind. The inherent thermal properties of steel frames help regulate indoor temperatures, reducing the reliance on heating and cooling systems. Moreover, these villas can be equipped with high-performance insulation materials and energy-efficient fixtures to further enhance their energy-saving capabilities. By minimizing energy consumption, light steel villas contribute to lower utility bills and a reduced carbon footprint.

##### 4. Durability and Resilience:

Despite their lightweight construction, light steel villas are remarkably durable and resilient. Steel frames are resistant to rust, corrosion, and pests, ensuring longevity and minimal maintenance requirements. Additionally, steel structures offer superior strength and stability, making them highly resistant to extreme weather conditions such as earthquakes and hurricanes. With their robust construction, light steel villas provide homeowners with peace of mind and long-lasting quality.

##### 5. Quick Assembly:

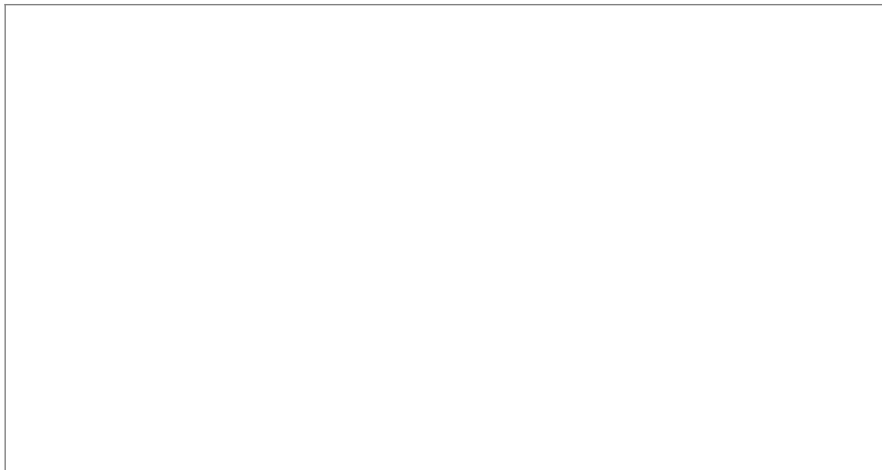
The prefabricated nature of light steel villas facilitates swift assembly on-site, significantly reducing construction time compared to traditional building methods. This accelerated construction process not only saves time but also minimizes disruptions to the surrounding environment. Whether it's a new residential development or a single-family home, light steel villas offer a faster and more efficient solution to meet housing demands.

##### 6. Customization Options:

From floor plans to interior finishes, light steel villas offer endless customization options to suit the preferences and lifestyle of homeowners. Whether it's an open-concept layout, high ceilings, or panoramic windows, the flexibility of steel frames allows for creative design possibilities. Additionally, interior features such as cabinetry, flooring, and lighting can be tailored to reflect individual tastes and preferences.

##### 7. Cost-Effectiveness:

Despite their innovative design and sustainable features, light steel villas offer cost-effective solutions for homeowners. The efficient construction process, combined with reduced maintenance and energy costs, results in long-term savings over the lifespan of the villa. Moreover, the durability and resilience of steel frames minimize the need for costly repairs and renovations, providing homeowners with excellent value for their investment.



Category	Specification
Structural System	Prefabricated light steel frame
	- Cold-formed galvanized steel members
	- Bolted connections
	- Designed according to local building codes
Exterior Wall	Insulated sandwich panels
	- Thickness: 50mm to 150mm
	- Core material: Polyurethane (PU) or Rockwool
	- Surface material: Color steel sheet or fiber cement board
Roof	Light steel truss system
	- Galvanized steel members
	- Roof covering: Color steel sheet or asphalt shingles
	- Insulation: Polyurethane (PU) or Rockwool
Floor	Light steel joist system
	- Galvanized steel members
	- Floor covering: Laminate flooring, ceramic tiles, or engineered wood
	- Insulation: Polyurethane (PU) or Rockwool
Doors	Exterior doors: Steel or aluminum frame with insulated panels
	Interior doors: Solid wood or composite
Windows	Aluminum alloy frames
	- Single or double-glazed
	- Low-E coating for energy efficiency
Electrical System	Wiring: Copper or aluminum cables
	Lighting: LED fixtures
	Power outlets: Standard 110V or 220V outlets
	HVAC system: Central air conditioning or ductless mini-split units
Plumbing System	PEX or PVC piping
	Fixtures: Sink, toilet, shower, bathtub
	Water heating: Electric or gas water heater
Fire Safety	Smoke detectors
	Fire extinguishers
	Fire-resistant materials in critical areas
Insulation	Thermal insulation: R-value specified according to local climate
	Vapor barrier to prevent condensation
Finishes	Interior walls: Gypsum board or fiber cement board
	Ceiling: Gypsum board or suspended ceiling
	Exterior paint or cladding
	Flooring: Laminate, tile, or engineered wood
Dimensions	Customizable according to client requirements
	Typical sizes: 100-300 square meters (house area)
	- Single-story or multi-story configurations
	- Optional balconies or terraces
Certification	Compliance with local building codes and standards
	ASTM or equivalent standards for materials

## Company introduction

As a wholly-owned subsidiary of Wujiang Saima (established in 2005), Suzhou Stars Integrated Housing Co., Ltd. focuses on foreign trade. As one of the most professional prefabricated house manufacturers in south-east China, we provide customers with all kinds of integrated housing solutions.

Equipped with complete production lines, including sandwich panel production machines and steel structure production line, with 5000 square meter workshop and professional staff, we already built long-term business with domestic giants like CSCEC and CREC. Also, based on our export experience in the past years, we are furthering our steps to global customers with best product and service.

As a supplier to overseas customers all over the world, we are very familiar with the manufacturing standards of various countries, such as European standards, American standards, Australian standards, and so on. We have also participated in the construction of many large-scale projects, such as recent 2022 Qatar World Cup camping construction.

## Company photo

## Workshop

---

---

---

### Storage and shipping

---

---

---

---

### FAQ

Q1. Can I have a sample order?

A: Yes, we welcome sample order to test and check quality. Mixed samples are acceptable.

Q2. What about the lead time?

A: 7-15 days for Sample preparing ,15-20 working days for mass production.

Q3. Do you have any MOQ limit ?

A: Low MOQ, 1pc for sample checking is available.

Q4.What services do you offer?

A:Design, manufacture, OEM.

Q5:How do I install it?

A:We'll have a detailed installation video, as well as an online guide,and on-site installation



**Suzhou Stars Integrated Housing Co., Ltd.**



+8615228076365



sales@szstarhouse.com



prefabricated-containerhouses.com

NO.1 ZHUJIABANG VILLIAGE.ZHENZE TOWN,WUJANG,SUZHOU,CHINA