



## Rugged Private Packed Container House Sizes Custom Color Multiple Styles

### Our Product Introduction

for more products please visit us on [prefabricated-containerhouses.com](http://prefabricated-containerhouses.com)

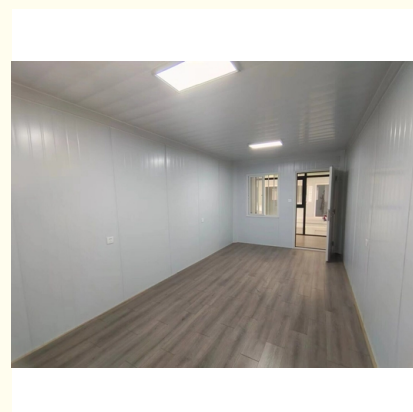
#### Basic Information

- Place of Origin: China
- Brand Name: INFINITE STARS
- Certification: CE/ISO9001/ISO45001/ISO14001
- Model Number: H
- Minimum Order Quantity: 7 Sets
- Packaging Details: One 40'high container for Marine insurance, can hold 6 sets
- Payment Terms: L/C, T/T
- Supply Ability: 20000 Set PER Month



#### Product Specification

- Keyword: Container House Used
- Fireproof: Grade A Fireproof
- Port: Qingdao
- Customization: Can Be Designed According To Customer's Specific Requirements
- Usage: Living, Office, Accommodation, Hotel, Etc.
- Advantage: Eco Friendly
- Customized: Customized
- Design: Custom Designs
- Accessories: Switch, Light, Socket Etc.
- Type: Modern
- Name: Flat Pack Container House
- MOQ: 7 PCS
- Highlight: **Rugged Private Packed Container House , Private Packed Container House Sizes Custom**



## Product Description

### Rugged Private Packed Container House Sizes Custom Color Multiple Styles

Introducing our robust line of customized packaged container homes, designed to offer unparalleled privacy, versatility, and style. Our homes are tailored to meet your specific needs, whether you're looking for a cozy retreat or a spacious living space.

#### Key Features:

##### Sturdy Construction:

Our container homes are crafted from high-quality, durable materials that are designed to withstand the elements. From the robust steel frame to the weather-resistant exterior, our homes are built to last.

##### Enhanced Privacy:

Privacy is a top priority in our homes. We offer a variety of design options, including insulated walls, soundproofing, and strategically placed windows, to ensure that your space remains secure and secluded.

##### Customizable Sizes:

Whether you need a compact one-bedroom unit or a spacious multi-bedroom home, we offer a range of customizable sizes to suit your needs. Our modular design allows for flexibility and scalability, ensuring that your home is the perfect fit for your lifestyle.

##### Multiple Color Options:

Want to add a personal touch to your home? Choose from our extensive range of exterior colors to create a unique aesthetic that reflects your personality. Our durable paint finishes are designed to last for years, retaining their color and gloss.

##### Variety of Styles:

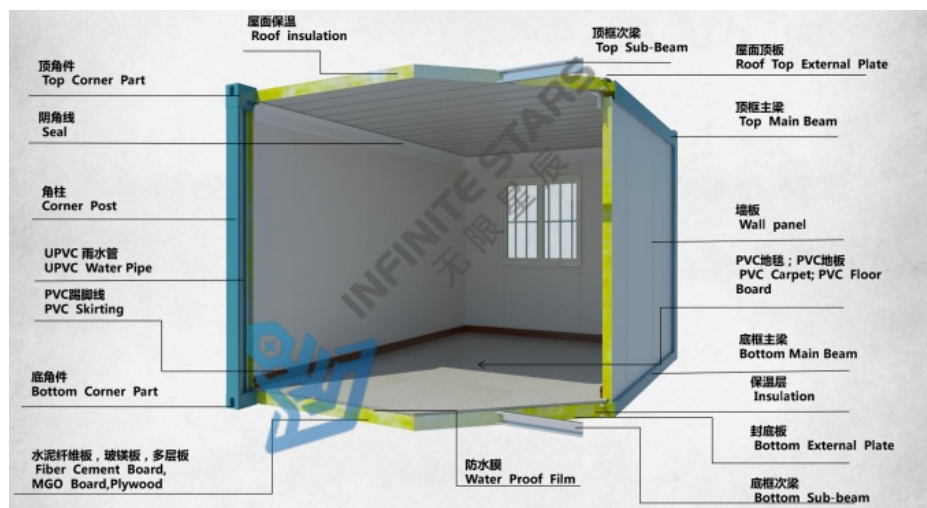
From modern minimalist to rustic charm, our homes come in a variety of styles to suit your taste. Whether you prefer sleek lines and contemporary finishes or cozy cottage details, we have a design that will resonate with you.

##### Easy Assembly:

Our packaged container homes are designed for ease of assembly. The prefabricated components are delivered to your site, ready for installation. Our team of experts can provide assistance with setup, ensuring that your home is assembled quickly and securely.

Standard Package Container House Datasheet		
Product Specification: 2.99-meter standard container	Length(mm)	6055(5840)
	Width(mm)	2430(2270)
	Height(mm)	2896(2550)
	Roof	organized drainage
	Number of floors	≤3
Design parameters	Service life	8-10 years
	Container weight	≤1.96T
	Ground live load	1.8KN/
	Roof live load	1.0KN/
	Wind load	0.8KN/
	Seismic degree	8
Structural	corner column	Galvanized cold rolled section steel, t=2.5mm, H2450X4 pcs material Q235B
	roof main beam	Galvanized cold rolled section steel, t=2.5mm, L5630X2pcs /L2130X2pcs material Q235B
	roof sub-beam	Galvanized square steel, t=1.8mm40*60X6 square tubes, radian t=1.8mm 15*30X3pcs square tube material Q235B
	floor main beam	Galvanized cold rolled section steel, t=2.5mm, L5630X2pcs /L2130X2pcs, material Q235B
	floor sub-beam	Galvanized square steel t=1.2mm, sub-beam X9pcs square tube material Q235B

	Angle piece hanging head	4.2mm steel galvanized stamping welding built-in bucket Angle piece X8
	Paint	Graphene Powder spraying (Electrostatic spraying)
Roof	Roof panel	0.5mm thick color steel plate 360 degree bite, color white gray
	Thermal insulation	100mm glass thermal insulation foam
	Ceiling plate	0.38 thick 831 ceiling
	downpipe	Four corners of downpipe 50PVC pipe X4pcs
Floor	Base	18mm thick fiber cement pressure plate, density $\geq 0.8\text{g/cm}^3$
Wall	Thickness	50mm thick color steel rock wool sandwich board; The outer and inner plates are made of 0.35mm galvanized color steel plate
	Heat preservation	75mm thick rock wool, bulk weight $\geq 90\text{kg/m}^3$ , combustion performance is class A non-combustible
	Color	white gray PE coating
Door	Spec(mm)	Width X height =840*2035 high-end door
	Material	Steel door with paint
Window	Spec(mm)	Front window: width X height =1150*1100: width X height =1150*1100; (Standard) Hollow window anti-theft integrated window
	Frame	Plastic-steel
	Glass	single









**Suzhou Stars Integrated Housing Co., Ltd.**



+8615228076365



sales@szstarhouse.com



prefabricated-containerhouses.com

NO.1 ZHUJIABANG VILLIAGE.ZHENZE TOWN,WUJANG,SUZHOU,CHINA