



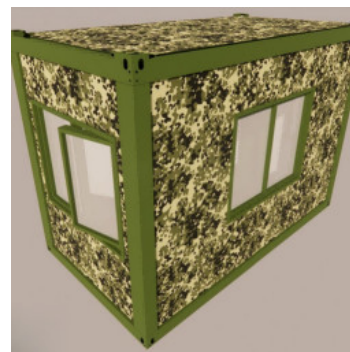
## Simple Modular Folding Homes Multiple Functions Folding Prefabricated House

### Our Product Introduction

for more products please visit us on [prefabricated-containerhouses.com](http://prefabricated-containerhouses.com)

#### Basic Information

- Place of Origin: China
- Brand Name: INFINITE STARS
- Certification: CE, ISO14001, ISO9001, ISO45001
- Model Number: F08
- Minimum Order Quantity: 7 Sets
- Price: USD 1200~1500/Set
- Packaging Details: 4 units/20gp 8 units/40hq
- Supply Ability: 2000 Sets PER Month



#### Product Specification

- Features: Foldable, Durable, Waterproof, Heat Insulation, Soundproof
- Door Type: Steel Door
- Usage: Temporary/Permanent Housing, Office, Accommodation, Etc.
- Frame: Galvanized Steel Frame
- Material: Steel Structure + Sandwich Panel
- Shape: Customized Shape
- Style: Modern Simple
- Standard Size: 5950\*3000\*2800mm Or Custom Requirement
- Wall: 50mm Sandwich Panel
- MOQ: 7 PCS
- Highlight: **Simple Modular Folding Homes, Modular Folding Homes Multiple Functions, Multiple Functions Folding Prefabricated House**



## Product Description

Modular House Construction Folding Container House Multiple Functions Wide Range Applications

The folding container house offers numerous benefits, including space-saving design, efficient loading and unloading, low fixed costs, environmental friendliness, versatility, high strength, and safety. Its compact folded state saves on storage and transportation costs, while its novel design ensures quick and efficient deployment. The environmentally friendly and energy-saving properties make it an eco-conscious choice. Its versatility means it can be used for a wide range of applications, from construction sites to tourism. High-quality materials and manufacturing processes ensure durability and safety, making the folding container house a practical and reliable solution.

Standard Foldable Container House Datasheet				
Product specifications	External size(L*W*H)	5800mm*2480mm*2520mm		
	Inner size(L*W*H)	5588mm*2268mm*2160mm		
	Folding height	570mm	Unit weight	1300kg
Design parameter	Thermal insulation	$\lambda=0.048W/m \cdot K$	wind resistance	0.60kN/
	Sound insulation	$\geq 30dB$	Fireproof performance	Class A
	Waterproof performance	360 degrees bite connection, organized drainage,no leakage under precipitation 16mm/min	Seismic performance	8 degree
	Floor live load	2.0kN/	Roof live load	1.0kN/
Item	part	Spec(mm)	Unit	Qty
	Corner piece(l*w*h*t)	Top 220*140*190*3.75,material Q235	pc	4
		Bottom 220*140*160*3.75,material Q235	pc	4
	Column(l*w*h*t)	220*140*2500*2.2,material Q235	pc	4

Frame	Bottom frame	160*2.45 main beam,material Q235	pc	4
		120*1.2 second beam,material Q235	pc	9
	Top frame	160*2.2 main beam,material Q235	pc	4
		C80*40*1.5 second beam,materialQ235	pc	6
		20*20*1.2 purlin,material Q235	pc	4
	Surface treatment	electrostatic spraying plastic powder baking paint	set	1
container body	Roof panel	color steel panel,360°bite connection t=0.36mm	set	1
	Ceiling decoration	170 type color steel integrated board t=0.3mm	pc	3 4
	Heat-insulating layer	Glass wool roll mat, thickness 50mm, capacity 28kg/m³, combustion performance of class A non-combustible.	set	1
	Floor structure board	18mm glass-magnesium board	pc	5
	Floor decoration	Manual pvc flooring leather, thickness 1.6mm	set	1
	Left and right walls (surrounded by galvanized groove edging)	950 type 50 series rock wool double white color steel composite panel with double-sided film, steel plate t=0.3mm, rock wool 60kg/m³	pc	2
	Front walls (surrounded by galvanized groove edging)	950 type 50 series rock wool double white color steel composite panel with double-sided film, steel plate t=0.3mm, rock wool 60kg/m³	pc	1

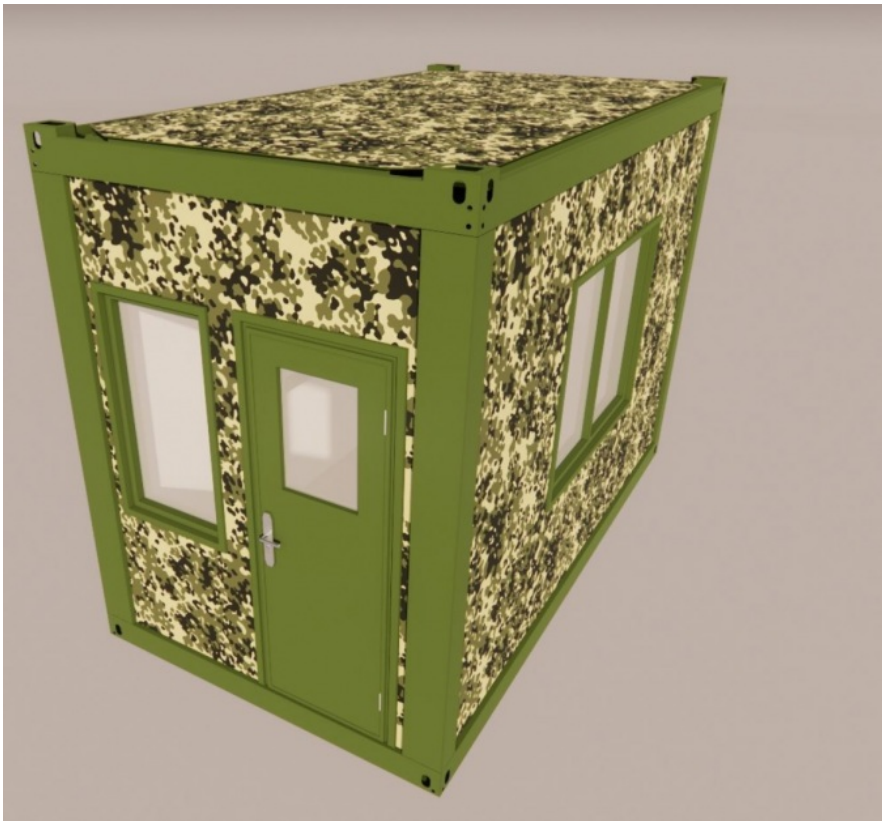
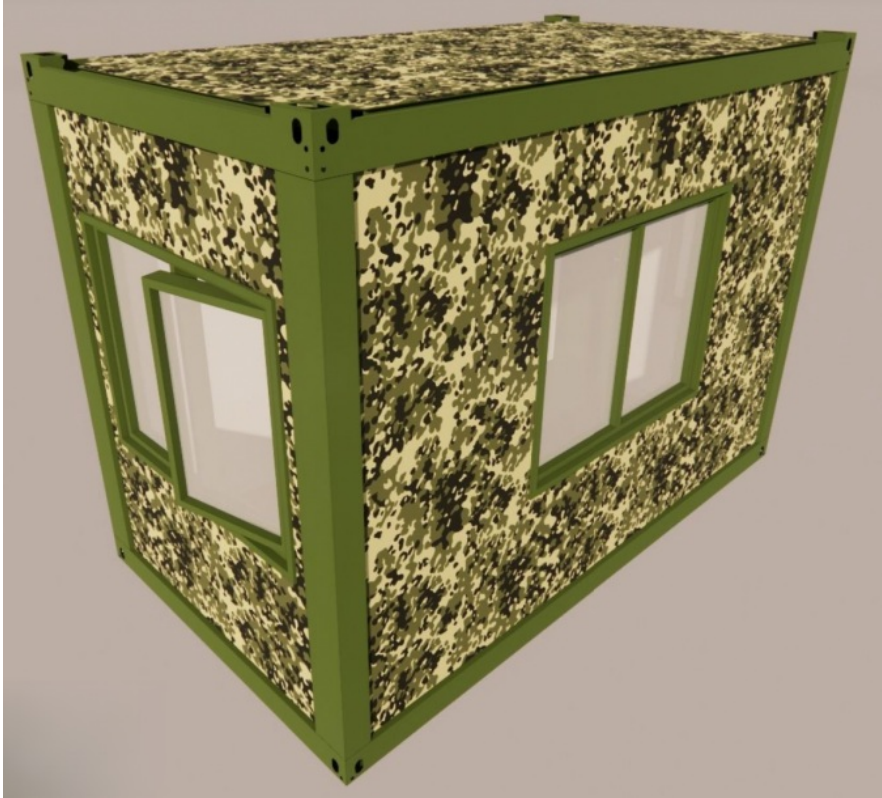
	Rear walls (surrounded by galvanized groove edging)	950 type 50 series rock wool double white color steel composite panel with double-sided film, steel plate t=0.3mm, rock wool 60kg/m <sup>3</sup>	pc	1
Door&Window	Door	Steel set door, size W925mm×H1970mm, steel plate t=0.4mm	pc	1
	Window	Upvc series plastic steel sliding window, size: W925mm×h1100mm; single-glazed, with anti-theft mesh, with screens	pc	2
Folding accessories		Lifting parts, folding parts	set	1
Electrical&Wire (indoor)	Light	LED600*300 rectangular light	set	2
	Socket	10A five-hole socket	pc	4
	Socket	16A air conditioner socket	pc	1
	Switch	single-button switch	pc	1
	Distribution box	which is equipped with a 2P32A leakage protection and two single 16A circuit breakers.	set	1
	CEE Industrial plug	220V,50Hz	pc	1
	Wire	Distribution Wire:3*6 square,AC socket:3*4 square,five-hole socket:3*2.5 square,Light:3*1.5 square	set	1

As a wholly-owned subsidiary of Wujiang Saima (established in 2005), Suzhou Stars Integrated Housing Co., Ltd. focuses on foreign trade. As one of the most professional prefabricated house manufacturers in south-east China, we provide customers with all kinds of integrated housing solutions.

Equipped with complete production lines, including sandwich panel production machines and steel structure production line, with 5000 square meter workshop and professional staff, we already built long-term business with domestic giants like CSCEC and CREC. Also, based on our export experience in the past years, we are furthering our steps to global customers with best product and service.

As a supplier to overseas customers all over the world, we are very familiar with the manufacturing standards of various countries, such as European standards, American standards, Australian standards, and so on. We have also participated in the construction of many large-scale projects, such as recent 2022 Qatar World Cup camping construction.

Suzhou Stars Integrated Housing Co., Ltd. mainly has five types of products: folding container house, flat pack container house, detachable container house, modified shipping container (in development), and steel structure construction, which can be widely used in many fields, such as dormitory, camp, office, canteen, shop, toilet and shower, viewing pavilion, firefighting station, isolation ward, etc.





+8615228076365



sales@szstarhouse.com



prefabricated-containerhouses.com

NO.1 ZHUJIABANG VILLIAGE.ZHENZE TOWN,WUJANG,SUZHOU,CHINA