



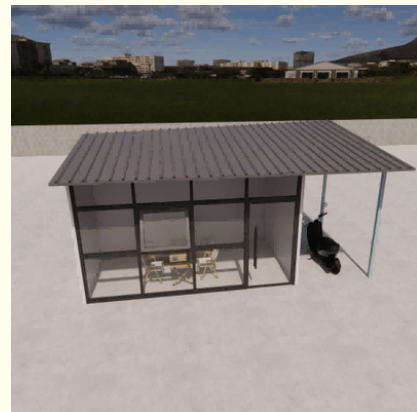
Temp Rest Area Detachable Ready Made Container Homes Eco Friendly

Our Product Introduction

for more products please visit us on prefabricated-containerhouses.com

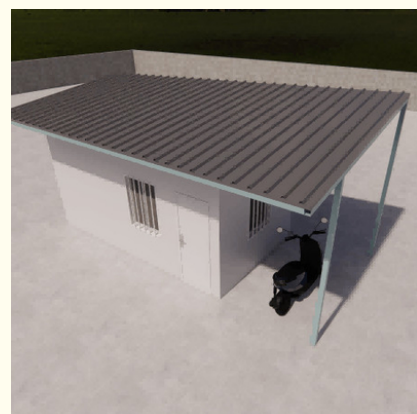
Basic Information

- Place of Origin: China
- Brand Name: INFINITE STARS
- Certification: CE, ISO14001, ISO9001, ISO45001
- Model Number: D08
- Minimum Order Quantity: 7 Sets
- Price: USD 1200~1500/Set
- Packaging Details: 7 units/20gp 17 units/40hq
- Supply Ability: 2000 Sets PER Month



Product Specification

- Wind Load: 0.6KN/
- Usage: Temporary/Permanent Housing
- Design: Customizable
- Steel Frame: Q235 Grade
- Loading Quantity: 7 Units/20gp 17 Units/40hq
- Door: Steel Door
- Window: Plastic Steel Window Single Glass
- Electricity System: Pre-installed
- MOQ: 7 PCS
- Highlight: **Temp Rest Area Ready Made Container Homes, Detachable Ready Made Container Homes, Ready Made Container Homes Eco Friendly**



Product Description

Readymade Temp Rest Area Detachable Container House Fast Assembly Easy Relocation

The detachable container house, as a temporary rest space, boasts several distinctive features. Its high level of prefabrication ensures rapid installation, minimizing construction time and costs. Its modular design allows for easy disassembly and reassembly, facilitating portability between locations. With robust construction, it provides durability and resilience against external pressures, ensuring stability in adverse conditions. The house also offers excellent insulation and soundproofing, creating a comfortable living environment. Customizable design options cater to individual needs and tastes, while its eco-friendly credentials minimize waste and promote sustainability. Economically, the detachable container house represents a cost-effective solution for temporary accommodations.

Standard Quick Assembly Container House Datasheet		
Product Specification: 3-meter standard container	Length(mm)	5950(5730)
	Width(mm)	3000(2800)
	Height(mm)	2800(2500)
	Center column	
	Roof	Flat roof, free drainage
	Number of floors	≤3
Design parameters	Service life	5-8 years
	Ground live load	1.8KN/
	Roof live load	0.5KN/
	Wind load	0.6KN/
	Seismic degree	8
Structural	corner column	galvanized cold rolled section steel, t=2.3mm, material Q235B
	roof main beam	galvanized cold rolled section steel, t=2.3mm, material Q235B
	roof sub-beam	Galvanized square steel 5*5, t=1.5mm, radian galvanized square steel 4*6t= 1.2mm material Q235B
	floor main beam	galvanized cold-rolled section steel, t=2.3mm, material Q235B
	floor sub-beam	galvanized square steel 4*8 (5), galvanized square steel 8*8 (4) material Q235B
	Paint	Graphene Powder spraying (Electrostatic spraying)
Roof	Roof panel	0.40mm thick color steel plate, color white gray
	Ceiling	0.25mm thick 811 ceiling, color white gray
Floor	Decorative surface	
	basic floor	18mm sanding board
Wall	Thickness	50mm thick color steel glass fiber sandwich board; The outer and inner plates are made of 0.3mm aluminum plated zinc color steel plate
	Heat preservation	50mm thick glass silk wool, bulk weight ≥60kg/m³, combustion performance is class A non-combustible

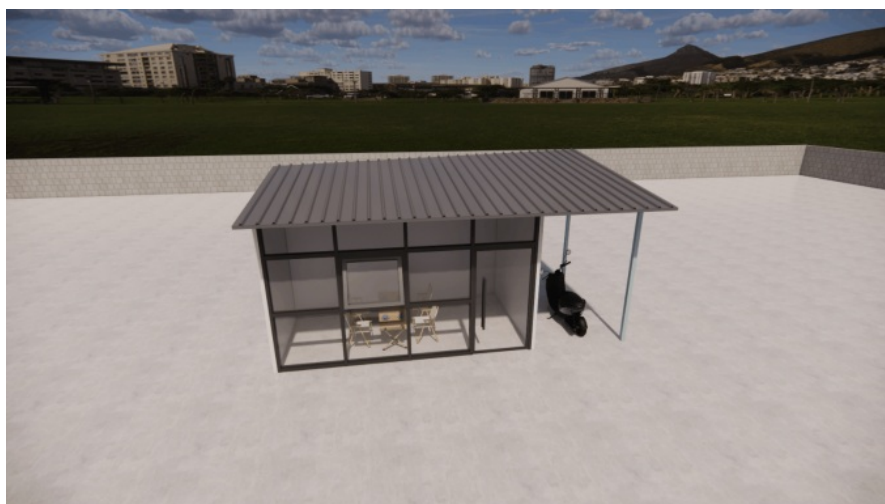
	Color	white gray PE coating
Door	Spec(mm)	Width X height =920*2030 common door
	Material	Steel door
Window	Spec(mm)	Front window: width X height =920*1200; Rear window (standard) : width X height =920*1200;
	Frame	Plastic steel window single glass
	Glass	common
Electricity	Voltage	220V~250V
	Wire	input power wire is 4 square, AC wire is 4 square, socket wire is 2.5 square, lighting switch wire is 1.5 square
	Circuit breaker	High break Miniature Circuit breaker (32A)
	Lamp tube	Two sets of circular LED fluorescent lamps
	Socket	3 five-hole socket 10A, 1 three-hole air conditioning socket 16A

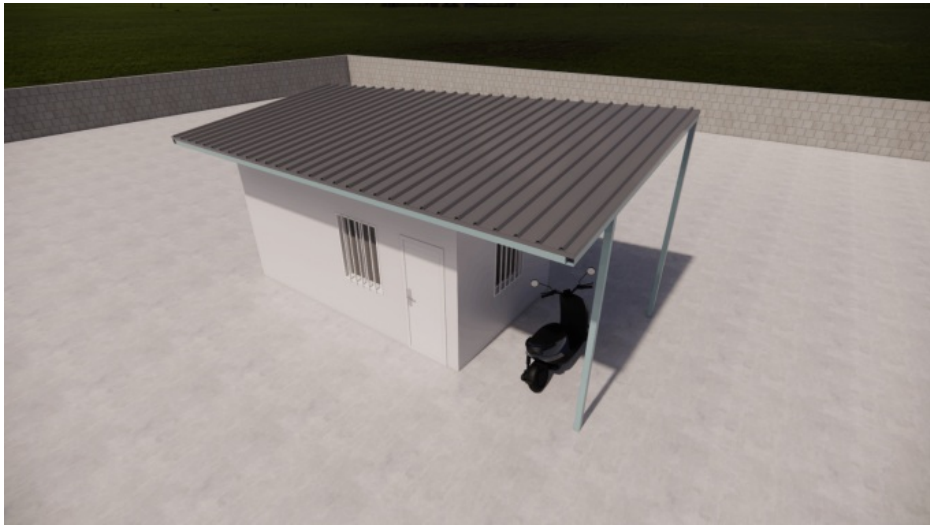
As a wholly-owned subsidiary of Wujiang Saima (established in 2005), Suzhou Stars Integrated Housing Co., Ltd. focuses on foreign trade. As one of the most professional prefabricated house manufacturers in south-east China, we provide customers with all kinds of integrated housing solutions.

Equipped with complete production lines, including sandwich panel production machines and steel structure production line, with 5000 square meter workshop and professional staff, we already built long-term business with domestic giants like CSCEC and CREC. Also, based on our export experience in the past years, we are furthering our steps to global customers with best product and service.

As a supplier to overseas customers all over the world, we are very familiar with the manufacturing standards of various countries, such as European standards, American standards, Australian standards, and so on. We have also participated in the construction of many large-scale projects, such as recent 2022 Qatar World Cup camping construction.

Suzhou Stars Integrated Housing Co., Ltd. mainly has five types of products: folding container house, flat pack container house, detachable container house, modified shipping container (in development), and steel structure construction, which can be widely used in many fields, such as dormitory, camp, office, canteen, shop, toilet and shower, viewing pavilion, firefighting station, isolation ward, etc.





Suzhou Stars Integrated Housing Co., Ltd.



+8615228076365



sales@szstarshouse.com



prefabricated-containerhouses.com

NO.1 ZHUJIABANG VILLIAGE.ZHENZE TOWN,WUJANG,SUZHOU,CHINA