



## Pre Installed Detachable Container House Modular Design Custom Modular Homes

### Our Product Introduction

for more products please visit us on [prefabricated-containerhouses.com](http://prefabricated-containerhouses.com)

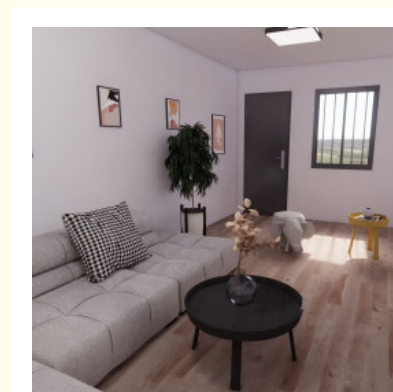
#### Basic Information

- Place of Origin: China
- Brand Name: INFINITE STARS
- Certification: CE, ISO14001, ISO9001, ISO45001
- Model Number: D08
- Minimum Order Quantity: 7 Sets
- Price: USD 1200~1500/Set
- Packaging Details: 7 units/20gp 17 units/40hq
- Supply Ability: 2000 Sets PER Month



#### Product Specification

- Insulation: 50mm Rockwool Sandwich Panel
- Wind Resistance: 0.60kN/
- Loading Quantity: 7 Units/20gp 17 Units/40hq
- Door Type: Steel Door
- Electrical System: Pre Installed
- Port: Shanghai Port; NingBo Port
- Design: Custom-tailored
- Main Structure: Galvanized Light Structure
- Structure Type: Frame Structure
- Standard Size L\*W\*H: 5950\*3000\*2800
- MOQ: 7 PCS
- Highlight: **Pre Installed Detachable Container House, Detachable Container House Modular Design, Detachable Custom Modular Homes**



## Product Description

### Prefab Team Building Room Detachable Container House Easy Transportation Assembly Relocation

Features of Detachable Container House as a Team Building Space:

**Flexibility & Customizability:** Modular design allows for quick adaptability to team needs, with customizable layouts, function areas, and aesthetics.

**Quick Assembly & Disassembly:** Efficiently set up and dismantled, minimizing preparation time and enabling easy relocation.

**Environmental Friendliness:** Constructed from recyclable materials, promoting a green lifestyle for team-building activities.

**Cost-effectiveness & Durability:** Affordable and long-lasting, providing a cost-efficient solution for team-building spaces.

**Multi-functionality:** Versatile design caters to various team-building needs, from meetings to entertainment.

**Unique Aesthetic:** Unconventional design adds creativity and fun to team-building events.

In summary, detachable container houses offer flexibility, efficiency, environmental benefits, cost-savings, multi-functionality, and a unique style, making them ideal for team-building spaces.

Standard Quick Assembly Container House Datasheet

Product Specification: 3-meter standard container	Length(mm)	5950(5730)
	Width(mm)	3000(2800)
	Height(mm)	2800(2500)
	Center column	
	Roof	Flat roof, free drainage
	Number of floors	≤3
Design parameters	Service life	5-8 years
	Ground live load	1.8KN/
	Roof live load	0.5KN/
	Wind load	0.6KN/
	Seismic degree	8
Structural	corner column	galvanized cold rolled section steel, t=2.3mm, material Q235B
	roof main beam	galvanized cold rolled section steel, t=2.3mm, material Q235B
	roof sub-beam	Galvanized square steel 5*5, t=1.5mm, radian galvanized square steel 4*6t= 1.2mm material Q235B
	floor main beam	galvanized cold-rolled section steel, t=2.3mm, material Q235B
	floor sub-beam	galvanized square steel 4*8 (5), galvanized square steel 8*8 (4) material Q235B
	Paint	Graphene Powder spraying (Electrostatic spraying)
Roof	Roof panel	0.40mm thick color steel plate, color white gray
	Ceiling	0.25mm thick 811 ceiling, color white gray
Floor	Decorative surface	
	basic floor	18mm sanding board

Wall	Thickness	50mm thick color steel glass fiber sandwich board; The outer and inner plates are made of 0.3mm aluminum plated zinc color steel plate
	Heat preservation	50mm thick glass silk wool, bulk weight $\geq 60\text{kg/m}^3$ , combustion performance is class A non-combustible
	Color	white gray PE coating
Door	Spec(mm)	Width X height =920*2030 common door
	Material	Steel door
Window	Spec(mm)	Front window: width X height =920*1200; Rear window (standard) : width X height =920*1200;
	Frame	Plastic steel window single glass
	Glass	common
Electricity	Voltage	220V~250V
	Wire	input power wire is 4 square, AC wire is 4 square, socket wire is 2.5 square, lighting switch wire is 1.5 square
	Circuit breaker	High break Miniature Circuit breaker (32A)
	Lamp tube	Two sets of circular LED fluorescent lamps
	Socket	3 five-hole socket 10A, 1 three-hole air conditioning socket 16A

As a wholly-owned subsidiary of Wujiang Saima (established in 2005), Suzhou Stars Integrated Housing Co., Ltd. focuses on foreign trade. As one of the most professional prefabricated house manufacturers in south-east China, we provide customers with all kinds of integrated housing solutions.

Equipped with complete production lines, including sandwich panel production machines and steel structure production line, with 5000 square meter workshop and professional staff, we already built long-term business with domestic giants like CSCEC and CREC. Also, based on our export experience in the past years, we are furthering our steps to global customers with best product and service.

As a supplier to overseas customers all over the world, we are very familiar with the manufacturing standards of various countries, such as European standards, American standards, Australian standards, and so on. We have also participated in the construction of many large-scale projects, such as recent 2022 Qatar World Cup camping construction.

Suzhou Stars Integrated Housing Co., Ltd. mainly has five types of products: folding container house, flat pack container house, detachable container house, modified shipping container (in development), and steel structure construction, which can be widely used in many fields, such as dormitory, camp, office, canteen, shop, toilet and shower, viewing pavilion, firefighting station, isolation ward, etc.





**Suzhou Stars Integrated Housing Co., Ltd.**



+8615228076365



sales@szstarhouse.com



prefabricated-containerhouses.com

NO.1 ZHUJIABANG VILLIAGE,ZHENZE TOWN,WUJANG,SUZHOU,CHINA