



Portable Container Home Expandable Foldable Container Houses

Our Product Introduction

for more products please visit us on prefabricated-containerhouses.com

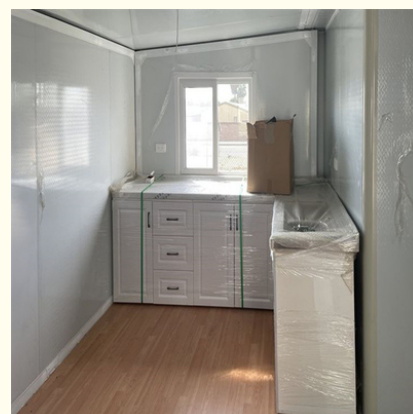
Basic Information

- Place of Origin: China
- Brand Name: INFINITE STARS
- Certification: CE/ISO9001/ISO45001/ISO14001
- Model Number: E01
- Minimum Order Quantity: 7 Sets
- Payment Terms: L/C, D/A, D/P, T/T
- Supply Ability: 20000 Set PER Month

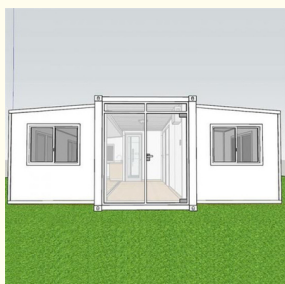


Product Specification

- Name: Expandable Portable Homes
- Design Style: Contemporary
- Material: Steel Structure + Sandwich Panel
- Assembly: Completed
- Denomination: Prefabricated Mobile Homes
- Door Type: Steel Door/Aluminum Alloy Door
- Keyword: Moduler Homes
- Expand Size: 6460mm(W)x5850mm(L)x2530mm(H)
- Wall: Sandwich Wall Panel Or Custom
- MOQ: 7 PCS
- Highlight: Portable Expandable Portable Homes, Container Home Expandable Foldable, Expandable Foldable Container Houses



More Images



Product Description

Cabin House Portable Prefab Expandable Foldable Container House With Appliances

Features:

Modular Design: Each Container Integrated Housing unit is meticulously designed with modular components, enabling effortless customization and scalability. From cozy studio apartments to expansive office complexes, the modular design adapts effortlessly to any space requirement.

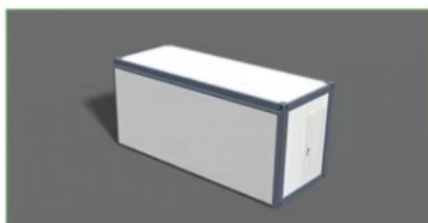
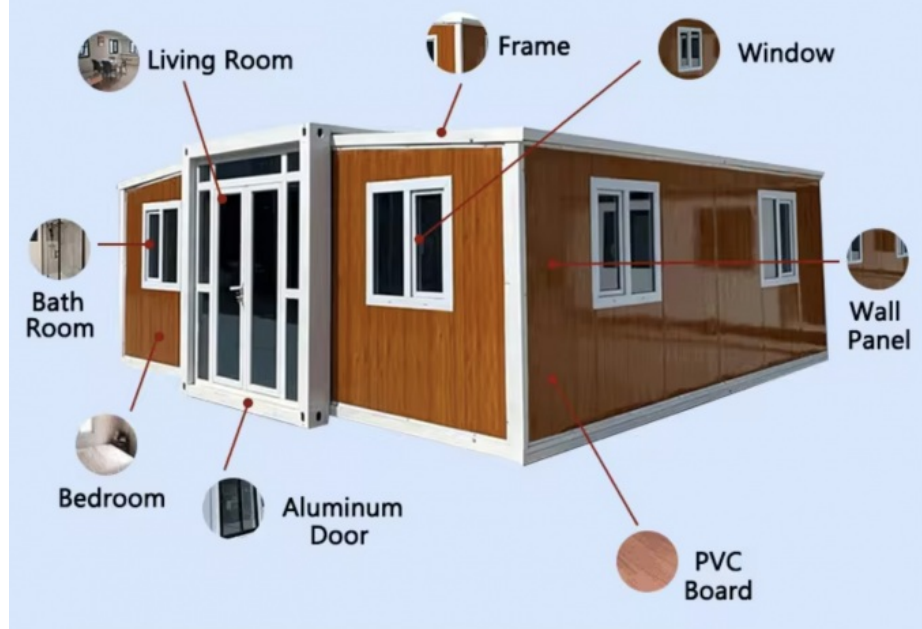
Sustainability: Our housing units incorporate eco-friendly materials and energy-efficient systems, promoting sustainability without compromising comfort.

Durability: Constructed from robust steel, Container Integrated Housing ensures long-lasting durability and resilience against harsh environmental conditions. Whether it's extreme temperatures or natural disasters, these homes provide a secure and reliable shelter.

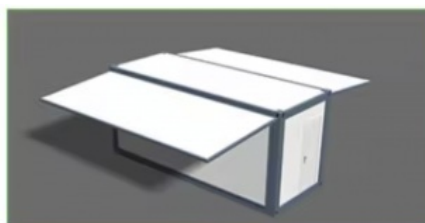
Product Analysis



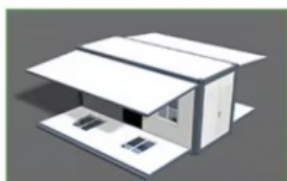
We have a special person to control every detail, carefully crafted.



Flat Pack Packing



Roof Installation



Floor Installation



Wall Installation



Expandable House Finished

Applications of Expandable Container Houses:

Residential: Affordable housing, vacation homes, temporary accommodation.

Commercial: Offices, retail stores, restaurants.

Hospitality: Hotels, resorts, event spaces.

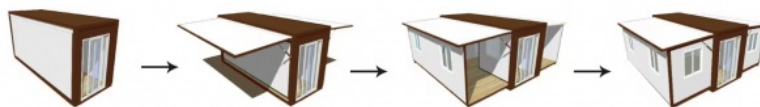
Humanitarian Aid: Emergency shelters, medical clinics, education centers.

Remote Living: Off-grid residences, remote workstations.

Construction and Mining: Worker accommodation, site offices.

Technical sheet:

Standard	AISI, ASTM, BS, DIN, GB, JIS
Structure	Q235B, Q345B or other requested
Open Size	6300x5850x2500mm
Closed Size	2250x5850x2500mm
Floor	15mm Fiber Cement Board
Window	W1130*H1100mm with Main and Subframe
Window of Bathroom	W400*H600mm without Screen
Door	W1520*H2200mm Aluminum Sliding Door
Wall Panel	50mm EPS/Mineral Wool/Glass Wool Sandwich Panel
Application	Office/Hotel/Resort/School/Living House/Store/Shop/Stadium/Shopping Mall/Warehouse/Workshop/Hospital/Plant
Tolerance	±1%
Processing Service	Bending, WELDING, Decoiling, Cutting, PUNCHING
Type	Moneybox expandable container house
Place of Origin	Guangzhou, China
Life Spans	15 Years
Main material	Steel Structure Frames, Sandwich Panel
Name	Expandable container house



Option:



parts



The floor drain



Electric water heater



Clothes hook



Wash basin



Shower



Pedestal pan



Pedestal pan



Independent bathroom



Water tank



Broken bridge
aluminum door



Broken bridge
aluminum window



Plastic steel
window

Socket 插座



AU Standard
AU标准



EUR Standard
欧标



US Standard
美标

Kitchen



Company introduction

As a wholly-owned subsidiary of Wujiang Saima (established in 2005), Suzhou Stars Integrated Housing Co., Ltd. focuses on foreign trade. As one of the most professional prefabricated house manufacturers in south-east China, we provide customers with all kinds of integrated housing solutions.

Equipped with complete production lines, including sandwich panel production machines and steel structure production line, with 5000 square meter workshop and professional staff, we already built long-term business with domestic giants like CSCEC and CREC. Also, based on our export experience in the past years, we are furthering our steps to global customers with best product and service.

As a supplier to overseas customers all over the world, we are very familiar with the manufacturing standards of various countries, such as European standards, American standards, Australian standards, and so on. We have also participated in the construction of many large-scale projects, such as recent 2022 Qatar World Cup camping construction.

Company photo

Workshop

Storage and shipping



Suzhou Stars Integrated Housing Co., Ltd.



+8615228076365



sales@szstarhouse.com



prefabricated-containerhouses.com

NO.1 ZHUJIABANG VILLIAGE.ZHENZE TOWN,WUJANG,SUZHOU,CHINA