



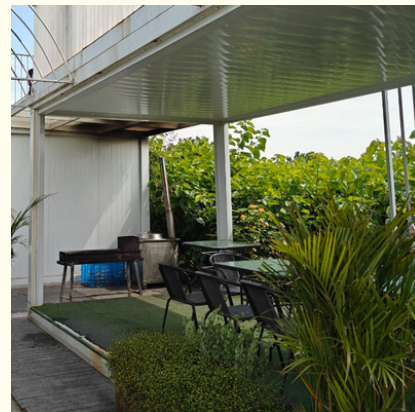
Premade Team Building Area Folding Portable Container House Easy Employment Quick Assembly

Our Product Introduction

for more products please visit us on prefabricated-containerhouses.com

Basic Information

- Place of Origin: China
- Brand Name: INFINITE STARS
- Certification: CE, ISO14001, ISO9001, ISO45001
- Model Number: F03
- Minimum Order Quantity: 7 Sets
- Price: USD 1200~1500/Set
- Packaging Details: 4 units/20gp 8 units/40hq



Product Specification

- Design Style: Contemporary
- Usage: Temporary Housing/Disaster Relief/Construction Site
- Earthquake Resistance: Grade 8
- Function: Portable Room Outdoor
- Frame: Galvanized Steel Frame
- Custom: OEM
- Installation: Quick And Easy
- Standard Size: 5800*2480*2520mm Or Custom Requirement
- Structure: Galvanized Steel Frame
- MOQ: 7 PCS
- Highlight: **Building Area Portable Container House, Folding Portable Container House, Premade Portable Container Homes**



Product Description

Premade Team Building Area Folding Portable Container House Easy Employment Quick Assembly

Features of a Folding Container House as a Team Building Area:

Portability: The folding design allows for easy transportation and setup in various locations, ideal for team-building events held outdoors or in changing locations.

Durability: Constructed from sturdy materials, the folding container house can withstand various weather conditions, ensuring a safe and reliable environment for team-building activities.

Customizability: The interior and layout can be customized to meet the specific needs and goals of the team-building event, creating a unique and engaging space.

Cost-Effectiveness: Compared to traditional venues, folding container houses offer a cost-efficient solution for team-building events, reducing upfront costs and allowing for longer-term reuse.

Multifunctionality: Versatile in design, the folding container house can be configured with different facilities and amenities to cater to a wide range of team-building activities.

Environmental Friendliness: Made from recycled materials, the folding container house reduces waste and promotes sustainability, making it an environmentally responsible choice for team-building events.

Promotes Team Bonding: The novelty and unique design of the folding container house can create a sense of excitement and shared experience, fostering closer bonds and enhancing team cohesion.

Standard Foldable Container House Datasheet

Product specifications	External size(L*W*H)	5800mm*2480mm*2520mm		
	Inner size(L*W*H)	5588mm*2268mm*2160mm		
	Folding height	570mm	Unit weight	1300kg
Design parameter	Thermal insulation	$\lambda=0.048W/m \cdot K$	wind resistance	0.60kN/
	Sound insulation	$\geq 30dB$	Fireproof performance	Class A
	Waterproof performance	360 degrees bite connection, organized drainage,no leakage under precipitation 16mm/min	Seismic performance	8 degree
	Floor live load	2.0kN/	Roof live load	1.0kN/
Item	part	Spec(mm)	Unit	Qty
	Corner piece(l*w*h*t)	Top 220*140*190*3.75,material Q235	pc	4
		Bottom 220*140*160*3.75,material Q235	pc	4

Frame	Column(l*w*h*t)	220*140*2500*2.2,material Q235	pc	4
	Bottom frame	160*2.45 main beam,material Q235	pc	4
		120*1.2 second beam,material Q235	pc	9
	Top frame	160*2.2 main beam,material Q235	pc	4
		C80*40*1.5 second beam,materialQ235	pc	6
		20*20*1.2 purlin,material Q235	pc	4
	Surface treatment	electrostatic spraying plastic powder baking paint	set	1
container body	Roof panel	color steel panel,360°bite connection t=0.36mm	set	1
	Ceiling decoration	170 type color steel integrated board t=0.3mm	pc	3 4
	Heat-insulating layer	Glass wool roll mat, thickness 50mm, capacity 28kg/m³, combustion performance of class A non-combustible.	set	1
	Floor structure board	18mm glass-magnesium board	pc	5
	Floor decoration	Manual pvc flooring leather, thickness 1.6mm	set	1
	Left and right walls (surrounded by galvanized groove edging)	950 type 50 series rock wool double white color steel composite panel with double-sided film, steel plate t=0.3mm, rock wool 60kg/m³	pc	2
	Front walls (surrounded by galvanized groove edging)	950 type 50 series rock wool double white color steel composite panel with double-sided film, steel plate t=0.3mm, rock wool 60kg/m³	pc	1
	Rear walls (surrounded by galvanized groove edging)	950 type 50 series rock wool double white color steel composite panel with double-sided film, steel plate t=0.3mm, rock wool 60kg/m³	pc	1
Door&Window	Door	Steel set door, size W925mm×H1970mm, steel plate t=0.4mm	pc	1
	Window	Upvc series plastic steel sliding window, size: W925mm×h1100mm; single-glazed, with anti-theft mesh, with screens	pc	2
Folding accessories		Lifting parts, folding parts	set	1

Electrical&Wire (indoor)	Light	LED600*300 rectangular light	set	2
	Socket	10A five-hole socket	pc	4
	Socket	16A air conditioner socket	pc	1
	Switch	single-button switch	pc	1
	Distribution box	which is equipped with a 2P32A leakage protection and two single 16A circuit breakers.	set	1
	CEE Industrial plug	220V,50Hz	pc	1
	Wire	Distribution Wire:3*6 square,AC socket:3*4 square,five-hole socket:3*2.5 square,Light:3*1.5 square	set	1

As a wholly-owned subsidiary of Wujiang Saima (established in 2005), Suzhou Stars Integrated Housing Co., Ltd. focuses on foreign trade. As one of the most professional prefabricated house manufacturers in south-east China, we provide customers with all kinds of integrated housing solutions.

Equipped with complete production lines, including sandwich panel production machines and steel structure production line, with 5000 square meter workshop and professional staff, we already built long-term business with domestic giants like CSCEC and CREC. Also, based on our export experience in the past years, we are furthering our steps to global customers with best product and service.

As a supplier to overseas customers all over the world, we are very familiar with the manufacturing standards of various countries, such as European standards, American standards, Australian standards, and so on. We have also participated in the construction of many large-scale projects, such as recent 2022 Qatar World Cup camping construction.

Suzhou Stars Integrated Housing Co., Ltd. mainly has five types of products: folding container house, flat pack container house, detachable container house, modified shipping container (in development), and steel structure construction, which can be widely used in many fields, such as dormitory, camp, office, canteen, shop, toilet and shower, viewing pavilion, firefighting station, isolation ward, etc.





Suzhou Stars Integrated Housing Co., Ltd.



+8615228076365



sales@szstarhouse.com



prefabricated-containerhouses.com

NO.1 ZHUJIABANG VILLIAGE.ZHENZE TOWN,WUJANG,SUZHOU,CHINA