



Modern Expandable Container Homes , Expandable Prefab House For Meeting Room

Our Product Introduction

for more products please visit us on prefabricated-containerhouses.com

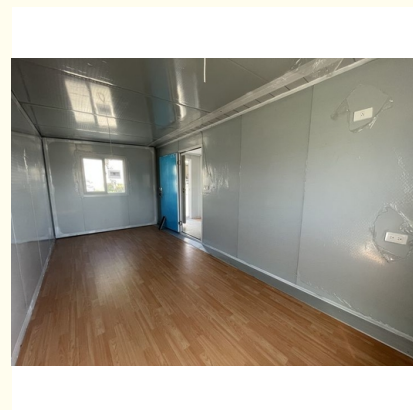
Basic Information

- Place of Origin: China
- Brand Name: INFINITE STARS
- Model Number: E01
- Minimum Order Quantity: 7 Sets
- Payment Terms: L/C, D/A, D/P, T/T
- Supply Ability: 20000 Set PER Month



Product Specification

- Packing: Expandable Prefab House
- Design Style: Contemporary
- Material: Steel Structure + Sandwich Panel
- Assembly: Completed
- Denomination: Prefabricated Mobile Homes
- Door Type: Steel Door/Aluminum Alloy Door
- Keyword: Moduler Homes
- Expand Size: 6460mm(W)x5850mm(L)x2530mm(H)
- Wall: Sandwich Wall Panel Or Custom
- MOQ: 7 PCS
- Highlight: **Modern Expandable Container Homes ,
Modern Prefab Expandable House ,
Meeting Room Expandable Prefab House**



More Images



Product Description

Customization Prefabricated House Prefabricated Modern Expandable Container House For Meeting Room

Key Features:

Modular Construction: Container Houses epitomize modular architecture, leveraging the inherent flexibility of shipping containers to create versatile living spaces. With standardized dimensions and modular design principles, these structures facilitate seamless customization and expansion to accommodate diverse spatial requirements.

Sustainability: At the forefront of environmental consciousness, Container Houses embrace sustainable practices through the adaptive reuse of shipping containers. By repurposing these steel modules, homeowners not only mitigate the environmental impact of construction but also contribute to resource conservation and waste reduction.

Structural Integrity: Despite their humble origins, Container Houses boast exceptional durability and structural integrity. Constructed from corten steel, these modules exhibit resilience against corrosion, pests, and extreme weather conditions, ensuring longevity and longevity for occupants.

Energy Efficiency: Through strategic insulation, ventilation, and passive solar design, Container Houses optimize energy efficiency, minimizing reliance on external energy sources and reducing utility costs for homeowners. By harnessing natural light and airflow, these dwellings offer a comfortable and sustainable living environment year-round.

Customization Options: From single-container dwellings to multi-container complexes, Container Houses offer unparalleled flexibility in design and layout. Whether tailored to individual preferences or specific project requirements, these structures can be configured to accommodate various architectural styles, amenities, and spatial arrangements.

Applications of Expandable Container Houses:

Residential: Affordable housing, vacation homes, temporary accommodation.

Commercial: Offices, retail stores, restaurants.

Hospitality: Hotels, resorts, event spaces.

Humanitarian Aid: Emergency shelters, medical clinics, education centers.

Remote Living: Off-grid residences, remote workstations.

Construction and Mining: Worker accommodation, site offices.

Option

Standard	AISI, ASTM, BS, DIN, GB, JIS
Structure	Q235B, Q345B or other requested
Open Size	6300x5850x2500mm
Closed Size	2250x5850x2500mm
Floor	15mm Fiber Cement Board
Window	W1130*H1100mm with Main and Subframe
Window of Bathroom	W400*H600mm without Screen
Door	W1520*H2200mm Aluminum Sliding Door
Wall Panel	50mm EPS/Mineral Wool/Glass Wool Sandwich Panel
Application	Office/Hotel/Resort/School/Living House/Store/Shop/Stadium/Shopping Mall/Warehouse/Workshop/Hospital/Plant
Tolerance	±1%
Processing Service	Bending, WELDING, Decoiling, Cutting, PUNCHING
Type	Moneybox expandable container house
Place of Origin	Guangzhou, China
Life Spans	15 Years
Main material	Steel Structure Frames, Sandwich Panel
Name	Expandable container house

Socket 插座



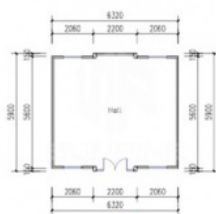
AU Standard
AU标准



EUR Standard
欧标



US Standard
美标



Hall
大厅



One bedroom A
一室一厅A



One bedroom B
一室一厅B



Two bedrooms
两室一厅



Three bedrooms
三室一厅



Four bedrooms
四卧

parts



The floor drain



Electric water heater



Clothes hook



Wash basin



Shower



Pedestal pan



Pedestal pan



Independent bathroom



Water tank



**Broken bridge
aluminum door**



**Broken bridge
aluminum window**



**Plastic steel
window**





Company introduction

As a wholly-owned subsidiary of Wujiang Saima (established in 2005), Suzhou Stars Integrated Housing Co., Ltd. focuses on foreign trade. As one of the most professional prefabricated house manufacturers in south-east China, we provide customers with all kinds of integrated housing solutions.

Equipped with complete production lines, including sandwich panel production machines and steel structure production line, with 5000 square meter workshop and professional staff, we already built long-term business with domestic giants like CSCEC and CREC. Also, based on our export experience in the past years, we are furthering our steps to global customers with best product and service.

As a supplier to overseas customers all over the world, we are very familiar with the manufacturing standards of various countries, such as European standards, American standards, Australian standards, and so on. We have also participated in the construction of many large-scale projects, such as recent 2022 Qatar World Cup camping construction.

Company photo

Workshop

Storage and shipping



Suzhou Stars Integrated Housing Co., Ltd.



+8615228076365



sales@szstarhouse.com



prefabricated-containerhouses.com

NO.1 ZHUJIABANG VILLIAGE.ZHENZE TOWN,WUJANG,SUZHOU,CHINA