



Solid And Beautiful Container House Curtain Wall Glass For Street Shops / Offices

Our Product Introduction

for more products please visit us on prefabricated-containerhouses.com

Basic Information

- Place of Origin: china
- Brand Name: INFINTE STARS
- Certification: CE/ISO9001/ISO45001/ISO14001
- Model Number: H
- Minimum Order Quantity: 7 Sets
- Price: dollar1300 /1set
- Packaging Details: One 40 'high container for Marine insurance, can hold 17 sets
- Delivery Time: 5-8work days
- Payment Terms: L/C, T/T
- Supply Ability: 150set/day

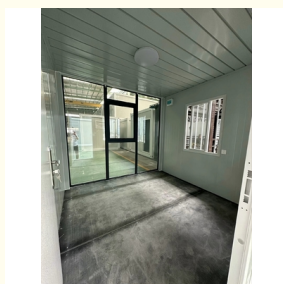


Product Specification

- Color: White/Grey/Blue/Green/Red
- Wind Resistance: Grade 11
- Size: 20ft/40ft
- Waterproof: Yes
- Installation: Easy/Fast
- Design: Customizable
- Flooring: Plywood/Vinyl/Carpet
- Earthquake Resistance: Grade 8
- Door Material: Steel/Aluminum Alloy
- Material: Steel
- Roof Material: EPS/PU/Rock Wool
- Usage: Living/Office/Accommodation
- Window Material: PVC/Aluminum Alloy
- Insulation: EPS/PU/Rock Wool
- Wall Material: Sandwich Panel



More Images



Product Description

Container House Facade Glass for Street Shops and Offices: A Combination of Sturdiness and Elegance

Introducing our cutting-edge container house facade glass, designed specifically for street shops and offices seeking a robust yet aesthetically pleasing exterior. This innovative glass solution offers the perfect blend of durability, style, and functionality for your business needs.

Sturdy Construction

The facade glass of our container houses is crafted from high-strength materials that ensure maximum durability. It can withstand the rigors of daily use, including high traffic areas and changing weather conditions, while maintaining its pristine appearance.

Elegant Design

Not only is our facade glass sturdy, but it also exudes elegance and sophistication. The sleek lines and modern aesthetics complement any business environment, whether it's a bustling street shop or a professional office space. The glass itself is clear and transparent, allowing for maximum light transmission, creating a bright and inviting atmosphere.

Functional Benefits

In addition to its sturdiness and elegance, our facade glass also offers numerous functional benefits. It is easy to clean and maintain, requiring minimal upkeep to retain its beauty. The glass is also energy-efficient, helping to reduce heating and cooling costs while maintaining a comfortable indoor temperature.

Versatile Applications

Our container house facade glass is suitable for a wide range of applications, including street shops, restaurants, offices, and more. It can be customized to fit the specific needs of your business, ensuring that you get the perfect exterior solution for your space.

In conclusion, our container house facade glass offers the perfect combination of sturdiness, elegance, and functionality for street shops and offices. Its high-strength construction, sleek design, and numerous functional benefits make it an ideal choice for businesses seeking a durable and attractive exterior solution.

Standard Quick Assembly Container House Datasheet		
Product Specification: 3-meter standard container	Length(mm)	5950(5730)
	Width(mm)	3000(2800)
	Height(mm)	2800(2500)
	Center column	
	Roof	Flat roof, free drainage
	Number of floors	≤3
Design parameters	Service life	5-8 years
	Ground live load	1.8KN/
	Roof live load	0.5KN/
	Wind load	0.6KN/
	Seismic degree	8
Structural	corner column	galvanized cold rolled section steel, t=2.3mm, material Q235B
	roof main beam	galvanized cold rolled section steel, t=2.3mm, material Q235B
	roof sub-beam	Galvanized square steel 5*5, t=1.5mm, radian galvanized square steel 4*6t=1.2mm material Q235B
	floor main beam	galvanized cold-rolled section steel, t=2.3mm, material Q235B
	floor sub-beam	galvanized square steel 4*8 (5), galvanized square steel 8*8 (4) material Q235B
	Paint	Graphene Powder spraying (Electrostatic spraying)
Roof	Roof panel	0.40mm thick color steel plate, color white gray
	Ceiling	0.25mm thick 811 ceiling, color white gray
Floor	Decorative surface	
	basic floor	18mm sanding board
Wall	Thickness	50mm thick color steel glass fiber sandwich board; The outer and inner plates are made of 0.3mm aluminum plated zinc color steel plate
	Heat preservation	50mm thick glass silk wool, bulk weight ≥60kg/m³, combustion performance is class A non-combustible
	Color	white gray PE coating
Door	Spec(mm)	Width X height =920*2030 common door
	Material	Steel door
Window	Spec(mm)	Front window: width X height =920*1200; Rear window (standard) : width X height =920*1200;
	Frame	Plastic steel window single glass
	Glass	common
	Voltage	220V~250V

Electricity	Wire	input power wire is 4 square, AC wire is 4 square, socket wire is 2.5 square, lighting switch wire is 1.5 square
	Circuit breaker	High break Miniature Circuit breaker (32A)
	Lamp tube	Two sets of circular LED fluorescent lamps
	Socket	3 five-hole socket 10A, 1 three-hole air conditioning socket 16A

Company introduction

As a wholly-owned subsidiary of Wujiang Saima (established in 2005), Suzhou Stars Integrated Housing Co., Ltd. focuses on foreign trade. As one of the most professional prefabricated house manufacturers in south-east China, we provide customers with all kinds of integrated housing solutions.

Equipped with complete production lines, including sandwich panel production machines and steel structure production line, with 5000 square meter workshop and professional staff, we already built long-term business with domestic giants like CSCEC and CREC. Also, based on our export experience in the past years, we are furthering our steps to global customers with best product and service.

As a supplier to overseas customers all over the world, we are very familiar with the manufacturing standards of various countries, such as European standards, American standards, Australian standards, and so on. We have also participated in the construction of many large-scale projects, such as recent 2022 Qatar World Cup camping construction.

Company photo

Workshop

Storage and shipping

□

□



Suzhou Stars Integrated Housing Co., Ltd.



+8615228076365



sales@szstarhouse.com



prefabricated-containerhouses.com

NO.1 ZHUJIABANG VILLIAGE.ZHENZE TOWN,WUJANG,SUZHOU,CHINA