



Size Customized Container Homes , Movable Container House Prefab

Our Product Introduction

for more products please visit us on prefabricated-containerhouses.com

Basic Information

- Place of Origin: china
- Brand Name: INFINTE STARS
- Certification: CE/ISO9001/ISO45001/ISO14001
- Model Number: H
- Minimum Order Quantity: 7 Sets
- Price: dollar1000 /1set
- Packaging Details: One 40 'high container for Marine insurance, can hold 17 sets
- Delivery Time: 5-8work days
- Payment Terms: L/C, T/T
- Supply Ability: 150set/day

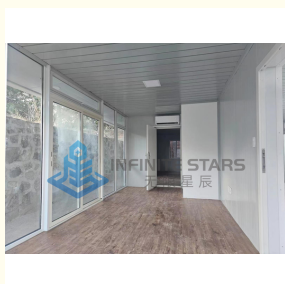


Product Specification

- Name: Size Customized Container Homes
- Insulation: EPS/Rock Wool/PU
- Wall Material: EPS/Rock Wool/PU Sandwich Panel
- Roof Material: EPS/Rock Wool/PU Sandwich Panel
- Door Material: Steel/Aluminum Alloy
- Wind Resistance: Grade 12
- Size: 20ft/40ft
- Material: Steel
- Window Material: PVC/Aluminum Alloy
- Fireproof Grade: B1/B2
- Installation: Quick And Easy
- Design: Customizable
- Floor Material: Plywood/Fiber Cement Board
- Earthquake Resistance: Grade 8
- Usage: Temporary/Permanent Housing



More Images



Product Description

Size customization Good stability Container houses are widely used

Container homes are revolutionizing the temporary and permanent housing industry with their unique blend of customizability, stability, and versatility. These innovative structures, originally designed for shipping purposes, have been transformed into highly functional living spaces that can meet a wide range of needs.

One of the standout features of container homes is their customizability. Unlike traditional buildings, container homes can be tailored to fit specific dimensions and requirements. Whether you need a small, one-bedroom abode or a spacious multi-room complex, container homes can be configured to suit your exact needs. This flexibility makes them ideal for a diverse range of applications, from remote construction sites to emergency shelters and even as permanent residences.

In addition to their customizability, container homes are renowned for their stability. Constructed from heavy-gauge steel and reinforced with structural supports, these structures are designed to withstand extreme weather conditions and the rigors of transportation. This ensures that your container home will remain standing, even in the most challenging environments.

The versatility of container homes is also noteworthy. These structures can be easily adapted for a wide range of uses, from offices and workshops to retail spaces and even schools. Their modular design allows for quick and easy assembly, making them a cost-effective and efficient solution for a variety of projects.

Furthermore, container homes are also environmentally friendly. By reusing existing shipping containers, we are reducing the demand for new construction materials, thus minimizing waste and environmental impact. This makes container homes an excellent choice for those who are concerned about sustainability and environmental conservation.

Standard Quick Assembly Container House Datasheet		
Product Specification: 3-meter standard container	Length(mm)	5950(5730)
	Width(mm)	3000(2800)
	Height(mm)	2800(2500)
	Center column	
	Roof	Flat roof, free drainage
	Number of floors	≤3
Design parameters	Service life	5-8 years
	Ground live load	1.8KN/
	Roof live load	0.5KN/
	Wind load	0.6KN/
	Seismic degree	8
Structural	corner column	galvanized cold rolled section steel, t=2.3mm, material Q235B
	roof main beam	galvanized cold rolled section steel, t=2.3mm, material Q235B
	roof sub-beam	Galvanized square steel 5*5, t=1.5mm, radian galvanized square steel 4*6t=1.2mm material Q235B
	floor main beam	galvanized cold-rolled section steel, t=2.3mm, material Q235B
	floor sub-beam	galvanized square steel 4*8 (5), galvanized square steel 8*8 (4) material Q235B
	Paint	Graphene Powder spraying (Electrostatic spraying)
Roof	Roof panel	0.40mm thick color steel plate, color white gray
	Ceiling	0.25mm thick 811 ceiling, color white gray
Floor	Decorative surface	
	basic floor	18mm sanding board
Wall	Thickness	50mm thick color steel glass fiber sandwich board; The outer and inner plates are made of 0.3mm aluminum plated zinc color steel plate
	Heat preservation	50mm thick glass silk wool, bulk weight ≥60kg/m ³ , combustion performance is class A non-combustible
	Color	white gray PE coating
Door	Spec(mm)	Width X height =920*2030 common door
	Material	Steel door
Window	Spec(mm)	Front window: width X height =920*1200; Rear window (standard) : width X height =920*1200;
	Frame	Plastic steel window single glass
	Glass	common
Electricity	Voltage	220V~250V
	Wire	input power wire is 4 square, AC wire is 4 square, socket wire is 2.5 square, lighting switch wire is 1.5 square
	Circuit breaker	High break Miniature Circuit breaker (32A)
	Lamp tube	Two sets of circular LED fluorescent lamps
	Socket	3 five-hole socket 10A, 1 three-hole air conditioning socket 16A

Company introduction

As a wholly-owned subsidiary of Wujiang Saima (established in 2005), Suzhou Stars Integrated Housing Co., Ltd. focuses on foreign trade. As one of the most professional prefabricated house manufacturers in south-east China, we provide customers with all kinds of integrated housing solutions.

Equipped with complete production lines, including sandwich panel production machines and steel structure production line, with 5000 square meter workshop and professional staff, we already built long-term business with domestic giants like CSCEC and CREC. Also, based on our export experience in the past years, we are furthering our steps to global customers with best product and service.

As a supplier to overseas customers all over the world, we are very familiar with the manufacturing standards of various countries, such as European standards, American standards, Australian standards, and so on. We have also participated in the construction of many large-scale projects, such as recent 2022 Qatar World Cup camping construction.

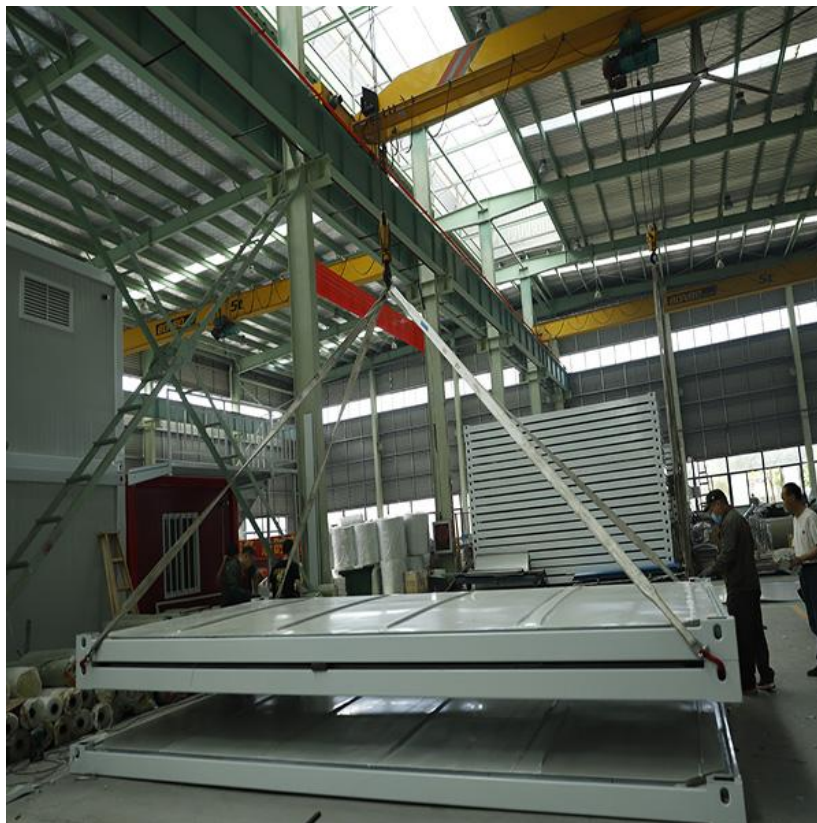
Company photo



Workshop



Storage and shipping





Suzhou Stars Integrated Housing Co., Ltd.



+8615228076365



sales@szstarhouse.com



prefabricated-containerhouses.com

NO.1 ZHUJIABANG VILLIAGE.ZHENZE TOWN,WUJANG,SUZHOU,CHINA