



## Affordable Prefab Container Homes Eco Friendly Steel Structure Container House

### Our Product Introduction

for more products please visit us on [prefabricated-containerhouses.com](http://prefabricated-containerhouses.com)

#### Basic Information

- Place of Origin: china
- Brand Name: INFINITE STARS
- Certification: CE/ISO9001/ISO45001/ISO14001
- Model Number: H
- Minimum Order Quantity: 7 Sets
- Price: dollar1000 /1set
- Packaging Details: One 40 'high container for Marine insurance, can hold 6 sets
- Delivery Time: 5-8work days
- Payment Terms: L/C, T/T
- Supply Ability: 150set/day

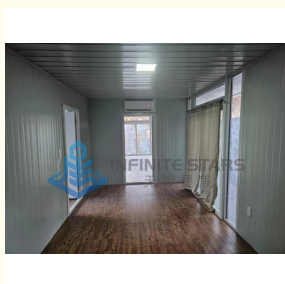


#### Product Specification

- Design: Customized/Modular
- Insulation: EPS/Rock Wool/PU
- Window: PVC/Aluminum Alloy
- Color: Customized
- Usage: Temporary/Permanent
- Accessories: Furniture/Air Conditioner/Generator
- Roof: Galvanized Steel Sheet
- Wall: Sandwich Panel
- Size: 20ft/40ft/Customized
- Door: Steel/Aluminum Alloy
- Material: Steel
- Installation: Easy/Fast
- Name: Prefabricated Container Houses
- MOQ: 7 PCS
- Highlight: **Affordable Prefab Container Homes ,**



#### More Images



## Product Description

### Housing Multiple People On Site Living In Container Houses Is Affordable

Looking for a budget-friendly accommodation solution for your construction site? Our multi-person container housing offers an ideal blend of affordability, functionality, and comfort.

**Economic Efficiency:** With construction costs soaring, it's crucial to find cost-effective accommodation solutions. Our container housing provides a practical alternative to traditional accommodations, significantly reducing expenses without compromising quality.

**Space Optimization:** Designed to maximize space utilization, each container is ingeniously crafted to accommodate multiple individuals comfortably. The layout ensures efficient use of every square foot, providing sleeping quarters, common areas, and necessary amenities within a compact footprint.

**Durability and Security:** Constructed from robust materials, our container housing offers unparalleled durability, capable of withstanding the rigors of construction site environments. Equipped with secure locking mechanisms, occupants can rest assured knowing their belongings are safe at all times.

**Customization Options:** Tailored to meet your specific needs, our container housing can be customized to include amenities such as air conditioning, heating, and sanitation facilities. From basic setups to more elaborate configurations, we provide flexibility to suit varying project requirements.

**Quick Installation:** Time is of the essence in the construction industry. Our container housing solutions are designed for rapid deployment, minimizing downtime and ensuring prompt availability of accommodations for your workforce.

**Sustainability:** Embracing eco-friendly practices, our container housing promotes sustainability through repurposing shipping containers, reducing construction waste, and minimizing environmental impact.

**Compliance and Regulations:** We adhere to all relevant building codes and regulations, ensuring compliance with safety standards and legal requirements.

Standard Package Container House Datasheet		
Product Specification: 2.99-meter standard container	Length(mm)	6055(5840)
	Width(mm)	2990(2780)
	Height(mm)	2896(2550)
	Roof	organized drainage
	Number of floors	≤3
Design parameters	Service life	8-10 years
	Container weight	≤1.96T
	Ground live load	1.8KN/
	Roof live load	1.0KN/
	Wind load	0.8KN/
Structural	Seismic degree	8
	corner column	Galvanized cold rolled section steel, t=2.5mm, H2450X4 pcs material Q235B
	roof main beam	Galvanized cold rolled section steel, t=2.5mm, L5630X2pcs /L2690X2pcs material Q235B
	roof sub-beam	Galvanized square steel, t=1.8mm40*60X6 square tubes, radian t=1.8mm 15*30X3pcs square tube material Q235B
	floor main beam	Galvanized cold rolled section steel, t=2.5mm, L5630X2pcs /L2690X2pcs, material Q235B
	floor sub-beam	Galvanized square steel t=1.2mm, sub-beam X9pcs square tube material Q235B
	Angle piece hanging head	4.2mm steel galvanized stamping welding built-in bucket Angle piece X8
	Paint	Graphene Powder spraying (Electrostatic spraying)
Roof	Roof panel	0.5mm thick color steel plate 360 degree bite, color white gray
	Thermal insulation	100mm glass thermal insulation foam
	Ceiling plate	0.38 thick 831 ceiling

	downpipe	Four corners of downpipe 50PVC pipe X4pcs
Floor	Base	18mm thick fiber cement pressure plate, density $\geq 0.8\text{g/cm}^3$
Wall	Thickness	50mm thick color steel rock wool sandwich board; The outer and inner plates are made of 0.35mm galvanized color steel plate
	Heat preservation	75mm thick rock wool, bulk weight $\geq 90\text{kg/m}^3$ , combustion performance is class A non-combustible
	Color	white gray PE coating
Door	Spec(mm)	Width X height =840*2035 high-end door
	Material	Steel door with paint
Window	Spec(mm)	Front window: width X height =1150*1100: width X height =1150*1100; (Standard) Hollow window anti-theft integrated window
	Frame	Plastic-steel
	Glass	Ordinary 4+9+4 hollow

### Company introduction

As a wholly-owned subsidiary of Wujiang Saima (established in 2005), Suzhou Stars Integrated Housing Co., Ltd. focuses on foreign trade. As one of the most professional prefabricated house manufacturers in south-east China, we provide customers with all kinds of integrated housing solutions.

Equipped with complete production lines, including sandwich panel production machines and steel structure production line, with 5000 square meter workshop and professional staff, we already built long-term business with domestic giants like CSCEC and CREC. Also, based on our export experience in the past years, we are furthering our steps to global customers with best product and service.

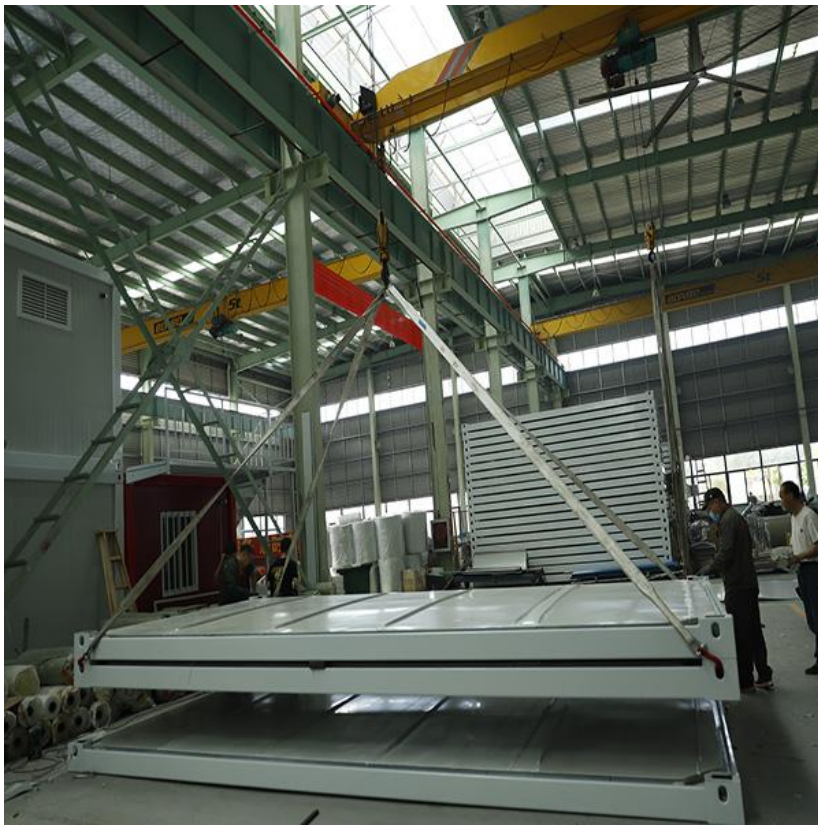
As a supplier to overseas customers all over the world, we are very familiar with the manufacturing standards of various countries, such as European standards, American standards, Australian standards, and so on. We have also participated in the construction of many large-scale projects, such as recent 2022 Qatar World Cup camping construction.

### Company photo

### Workshop

### Storage and shipping

□



**Suzhou Stars Integrated Housing Co., Ltd.**



+8615228076365



sales@szstarhouse.com



prefabricated-containerhouses.com

NO.1 ZHUJIABANG VILLIAGE.ZHENZE TOWN,WUJANG,SUZHOU,CHINA