



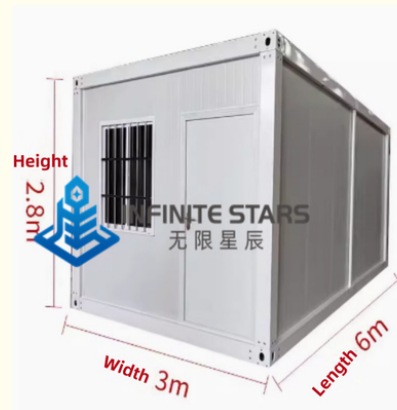
Temporary Container House Prefabricated Modular Building Container Homes

Our Product Introduction

for more products please visit us on prefabricated-containerhouses.com

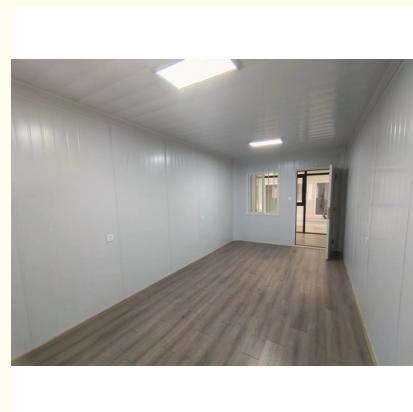
Basic Information

- Place of Origin: china
- Brand Name: INFINITE STARS
- Certification: CE/ISO9001/ISO45001/ISO14001
- Model Number: H
- Minimum Order Quantity: 7 Sets
- Price: dollar1300 /1set
- Packaging Details: One 40 'high container for Marine insurance, can hold 6 sets
- Delivery Time: 5-8work days
- Payment Terms: L/C, T/T
- Supply Ability: 150set/day



Product Specification

- Design: Customized/Modular
- Insulation: EPS/Rock Wool/PU
- Window: PVC/Aluminum Alloy
- Color: Customized
- Usage: Temporary/Permanent
- Accessories: Furniture/Air Conditioner/Generator
- Roof: Galvanized Steel Sheet
- Wall: Sandwich Panel
- Size: 20ft/40ft/Customized
- Electrical System: Lighting/Socket/Switch
- Floor: Plywood/Composite Wood
- Door: Steel/Aluminum Alloy
- Plumbing System: Toilet/Sink/Shower
- Material: Steel
- Installation: Easy/Fast



Product Description

Easy To Move To Build Fast Container Houses Stable And Solid Outdoor Camps

In today's fast-paced world, the need for efficient and reliable temporary housing solutions has become increasingly apparent. This is especially true for outdoor enthusiasts, adventure seekers, and emergency responders who often require shelter in remote or temporary locations. Here, container houses provide an excellent solution, offering portability, speed of assembly, and unparalleled stability.

Container houses, as the name suggests, are made from shipping containers that have been transformed into functional living spaces. These structures are designed to be lightweight yet sturdy, ensuring they can be easily transported to any desired location. Once on site, they can be quickly assembled, often with minimal tools and labor, significantly reducing setup time.

One of the key advantages of container houses is their stability. Made from sturdy steel frames and weatherproof materials, they are designed to withstand extreme weather conditions, including high winds, heavy rains, and even snow. This ensures that occupants can rest easy, knowing their shelter is secure and reliable.

For outdoor campsites, container houses offer a range of benefits. They provide ample living space, allowing campers to store equipment, cook meals, and relax in comfort. Additionally, they can be customized to meet specific needs, whether that's adding additional bedrooms, installing plumbing, or even integrating renewable energy systems.

Moreover, container houses are eco-friendly. By reusing existing shipping containers, we are reducing the demand for new construction materials, thus minimizing waste and environmental impact. This makes them an ideal choice for those who value sustainability and environmental conservation.

Standard Package Container House Datasheet		
Product Specification: 2.99-meter standard container	Length(mm)	6055(5840)
	Width(mm)	2990(2780)
	Height(mm)	2896(2550)
	Roof	organized drainage
	Number of floors	≤3
Design parameters	Service life	8-10 years
	Container weight	≤1.96T
	Ground live load	1.8KN/
	Roof live load	1.0KN/
	Wind load	0.8KN/
Structural	Seismic degree	8
	corner column	Galvanized cold rolled section steel, t=2.5mm, H2450X4 pcs material Q235B
	roof main beam	Galvanized cold rolled section steel, t=2.5mm, L5630X2pcs /L2690X2pcs material Q235B
	roof sub-beam	Galvanized square steel, t=1.8mm40*60X6 square tubes, radian t=1.8mm 15*30X3pcs square tube material Q235B
	floor main beam	Galvanized cold rolled section steel, t=2.5mm, L5630X2pcs /L2690X2pcs, material Q235B
	floor sub-beam	Galvanized square steel t=1.2mm, sub-beam X9pcs square tube material Q235B
	Angle piece hanging head	4.2mm steel galvanized stamping welding built-in bucket Angle piece X8
Roof	Paint	Graphene Powder spraying (Electrostatic spraying)
	Roof panel	0.5mm thick color steel plate 360 degree bite, color white gray
	Thermal insulation	100mm glass thermal insulation foam
	Ceiling plate	0.38 thick 831 ceiling
Floor	downpipe	Four corners of downpipe 50PVC pipe X4pcs
	Base	18mm thick fiber cement pressure plate, density ≥0.8g/cm³

Wall	Thickness	50mm thick color steel rock wool sandwich board; The outer and inner plates are made of 0.35mm galvanized color steel plate
	Heat preservation	75mm thick rock wool, bulk weight $\geq 90\text{kg/m}^3$, combustion performance is class A non-combustible
	Color	white gray PE coating
Door	Spec(mm)	Width X height =840*2035 high-end door
	Material	Steel door with paint
Window	Spec(mm)	Front window: width X height =1150*1100: width X height =1150*1100; (Standard) Hollow window anti-theft integrated window
	Frame	Plastic-steel
	Glass	Ordinary 4+9+4 hollow

Company introduction

As a wholly-owned subsidiary of Wujiang Saima (established in 2005), Suzhou Stars Integrated Housing Co., Ltd. focuses on foreign trade. As one of the most professional prefabricated house manufacturers in south-east China, we provide customers with all kinds of integrated housing solutions.

Equipped with complete production lines, including sandwich panel production machines and steel structure production line, with 5000 square meter workshop and professional staff, we already built long-term business with domestic giants like CSCEC and CREC. Also, based on our export experience in the past years, we are furthering our steps to global customers with best product and service.

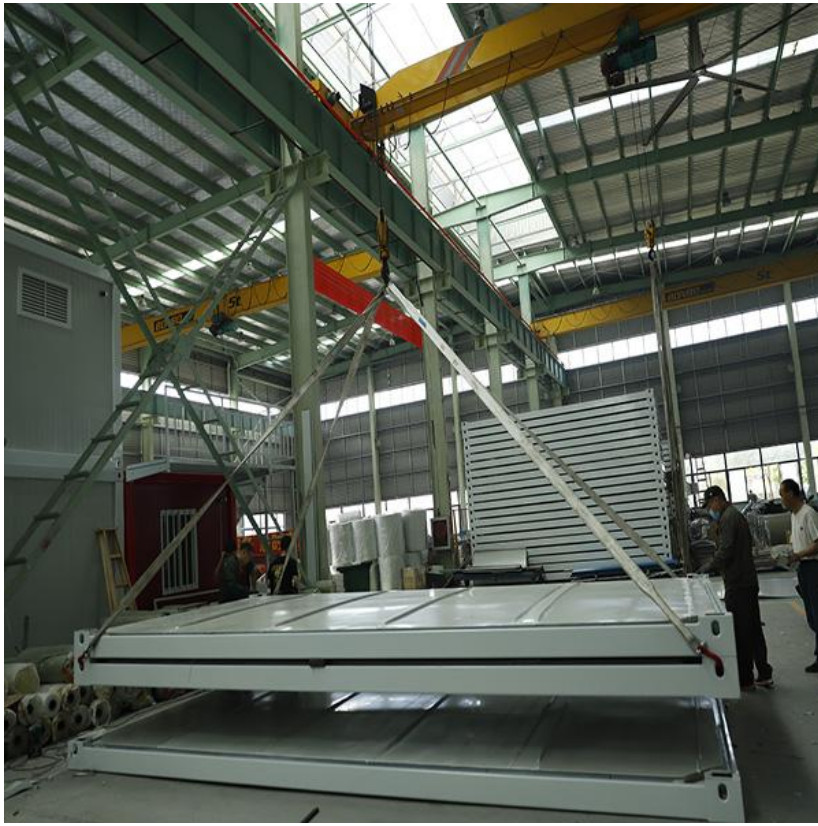
As a supplier to overseas customers all over the world, we are very familiar with the manufacturing standards of various countries, such as European standards, American standards, Australian standards, and so on. We have also participated in the construction of many large-scale projects, such as recent 2022 Qatar World Cup camping construction.

Company photo

Workshop

Storage and shipping

□



Suzhou Stars Integrated Housing Co., Ltd.



+8615228076365



sales@szstarhouse.com



prefabricated-containerhouses.com

NO.1 ZHUJIABANG VILLIAGE.ZHENZE TOWN,WUJANG,SUZHOU,CHINA