



## Steel Moveable Container House Prefabricated Quick Build Container Homes

### Our Product Introduction

for more products please visit us on [prefabricated-containerhouses.com](http://prefabricated-containerhouses.com)

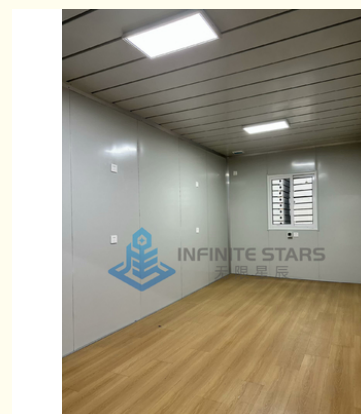
#### Basic Information

- Place of Origin: china
- Brand Name: INFINITE STARS
- Certification: CE/ISO9001/ISO45001/ISO14001
- Model Number: H
- Minimum Order Quantity: 7 Sets
- Price: dollar1300 /1set
- Packaging Details: One 40 'high container for Marine insurance, can hold 6 sets
- Delivery Time: 5-8work days
- Payment Terms: L/C, T/T
- Supply Ability: 100set/day



#### Product Specification

- Name: Moveable Container House
- Size: 20ft/40ft
- Electrical System: Lighting/Sockets/Switches
- Material: Steel
- Floor: Plywood/Composite Board
- Additional Features: Air Conditioning/Furniture/Security System
- Transportation: Convenient And Cost-effective
- Plumbing System: Toilet/Shower/Sink
- Window: PVC/Aluminum Alloy
- Insulation: EPS/Rock Wool/PU
- Customization: Available
- Usage: Temporary/Permanent Housing
- Installation: Quick And Easy
- Door: Steel Door/Aluminum Alloy Door
- Roof: Galvanized Steel Sheet



## Product Description

### A Wide Range Of Quick-Build Container Houses With Mobility And Corrosion Resistance

Looking for a housing solution that offers rapid assembly, mobility, and customizable dimensions? Look no further than our container homes.

#### features:

**Quick Assembly:** Our container homes are designed for rapid assembly, allowing you to move in sooner rather than later. With pre-fabricated components and streamlined construction processes, we minimize the time and effort required for setup, ensuring a swift and efficient building process.

**Mobility:** Whether you're a frequent traveler, a temporary resident, or someone who values flexibility, our container homes offer unparalleled mobility. Designed to be easily transported and relocated, they provide the freedom to move with minimal hassle. Simply disassemble, transport, and reassemble your home wherever life takes you.

**Customizable Sizes:** We understand that one size does not fit all when it comes to housing. That's why our container homes are fully customizable in terms of size and dimensions. Whether you need a compact living space or a spacious family home, we can tailor the size of your container home to meet your specific needs and preferences.

**Quality Construction:** Despite their modular nature, our container homes are built to the highest standards of quality and durability. Constructed from sturdy shipping containers and premium materials, they offer a safe, secure, and comfortable living environment that stands the test of time.

Whether it's used as temporary housing, emergency shelters, or mobile offices, our Fireproof Portable Integrated Living Container offers a versatile solution for various applications.

Standard Package Container House Datasheet

Product Specification: 2.99-meter standard container	Length(mm)	6055(5840)
	Width(mm)	2990(2780)
	Height(mm)	2896(2550)
	Roof	organized drainage
	Number of floors	≤3
Design parameters	Service life	8-10 years
	Container weight	≤1.96T
	Ground live load	1.8KN/
	Roof live load	1.0KN/
	Wind load	0.8KN/
Structural	Seismic degree	8
	corner column	Galvanized cold rolled section steel, t=2.5mm, H2450X4 pcs material Q235B
	roof main beam	Galvanized cold rolled section steel, t=2.5mm, L5630X2pcs /L2690X2pcs material Q235B
	roof sub-beam	Galvanized square steel, t=1.8mm40*60X6 square tubes, radian t=1.8mm 15*30X3pcs square tube material Q235B
	floor main beam	Galvanized cold rolled section steel, t=2.5mm, L5630X2pcs /L2690X2pcs, material Q235B
	floor sub-beam	Galvanized square steel t=1.2mm, sub-beam X9pcs square tube material Q235B
	Angle piece hanging head	4.2mm steel galvanized stamping welding built-in bucket Angle piece X8
Roof	Paint	Graphene Powder spraying (Electrostatic spraying)
	Roof panel	0.5mm thick color steel plate 360 degree bite, color white gray
	Thermal insulation	100mm glass thermal insulation foam
	Ceiling plate	0.38 thick 831 ceiling
Floor	downpipe	Four corners of downpipe 50PVC pipe X4pcs
	Base	18mm thick fiber cement pressure plate, density ≥0.8g/cm³
Wall	Thickness	50mm thick color steel rock wool sandwich board; The outer and inner plates are made of 0.35mm galvanized color steel plate
	Heat preservation	75mm thick rock wool, bulk weight ≥90kg/m³, combustion performance is class A non-combustible
	Color	white gray PE coating
Door	Spec(mm)	Width X height =840*2035 high-end door

	Material	Steel door with paint
Window	Spec(mm)	Front window: width X height =1150*1100: width X height =1150*1100; (Standard) Hollow window anti-theft integrated window
	Frame	Plastic-steel
	Glass	Ordinary 4+9+4 hollow

These features describe the key advantages and functionalities of our Fireproof Portable Integrated Living Container, providing a flexible and reliable solution for various scenarios.

## Company introduction

As a wholly-owned subsidiary of Wujiang Saima (established in 2005), Suzhou Stars Integrated Housing Co., Ltd. focuses on foreign trade. As one of the most professional prefabricated house manufacturers in south-east China, we provide customers with all kinds of integrated housing solutions.

Equipped with complete production lines, including sandwich panel production machines and steel structure production line, with 5000 square meter workshop and professional staff, we already built long-term business with domestic giants like CSCEC and CREC. Also, based on our export experience in the past years, we are furthering our steps to global customers with best product and service.

As a supplier to overseas customers all over the world, we are very familiar with the manufacturing standards of various countries, such as European standards, American standards, Australian standards, and so on. We have also participated in the construction of many large-scale projects, such as recent 2022 Qatar World Cup camping construction.

## Company photo



## Workshop



## Storage and shipping



□

## Why Choose Us:

**Commitment to Sustainability:** We are dedicated to promoting sustainable living practices and minimizing our environmental footprint.

**Affordable Solutions:** Our container homes provide an affordable housing option without compromising on quality or comfort.

**Expertise and Experience:** With years of experience in container home construction, we have the knowledge and expertise to deliver high-quality, cost-effective solutions.

**Customer Satisfaction:** Your satisfaction is our top priority. We work closely with you to understand your needs and deliver homes that exceed your expectations.



Suzhou Stars Integrated Housing Co., Ltd.

+8615228076365    sales@szstarhouse.com    prefabricated-containerhouses.com

NO.1 ZHUJIABANG VILLIAGE.ZHENZE TOWN,WUJANG,SUZHOU,CHINA