



Fireproof Mobile Container Houses , Human Packing Integrated Custom Prefab Container Homes

Our Product Introduction

for more products please visit us on prefabricated-containerhouses.com

Basic Information

- Place of Origin: china
- Brand Name: INFINITE STARS
- Certification: CE/ISO9001/ISO45001/ISO14001
- Model Number: H
- Minimum Order Quantity: 7 Sets
- Price: dollar1300 /1set
- Packaging Details: One 40 'high container for Marine insurance, can hold 6 sets
- Delivery Time: 5-8work days
- Payment Terms: L/C, T/T
- Supply Ability: 100set/day

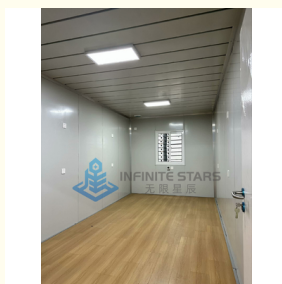


Product Specification

- Wall: Galvanized Steel Sheet
- Durability: Weather-resistant/Corrosion-resistant
- Plumbing System: Toilet/Sink/Shower
- Size: 20ft/40ft
- Usage: Temporary/Permanent Housing
- Customization: Available
- Material: Steel
- Installation: Quick And Easy
- Door: Steel Door
- Electrical System: Lighting/Sockets/Switches
- Roof: Galvanized Steel Sheet
- Window: PVC/Aluminum Alloy
- Insulation: EPS/Rock Wool/PU
- Floor: Plywood/Composite Board
- Name: Prefabricated Container Houses



More Images



Product Description

Fireproof , Mobile , Integrated Human Packing Container Houses For All Scenarios

Our Fireproof Portable Integrated Living Container is designed to provide a safe and versatile housing solution for various scenarios. Whether it's temporary housing for disaster relief, construction site accommodations, or remote workstations, our container offers a blend of functionality, durability, and safety.

Its features:

Fireproof Construction: Built with fire-resistant materials to ensure safety in any environment.

Portability: Easily transportable to different locations, making it suitable for emergency response situations.

Integrated Design: Equipped with essential amenities including sleeping quarters, restroom facilities, and storage space.

Customizable: Can be tailored to specific needs with options for size, layout, and additional features.

Durable: Constructed to withstand harsh conditions, ensuring long-term reliability.

Quick Deployment: Rapid setup and installation, minimizing downtime and facilitating swift response.

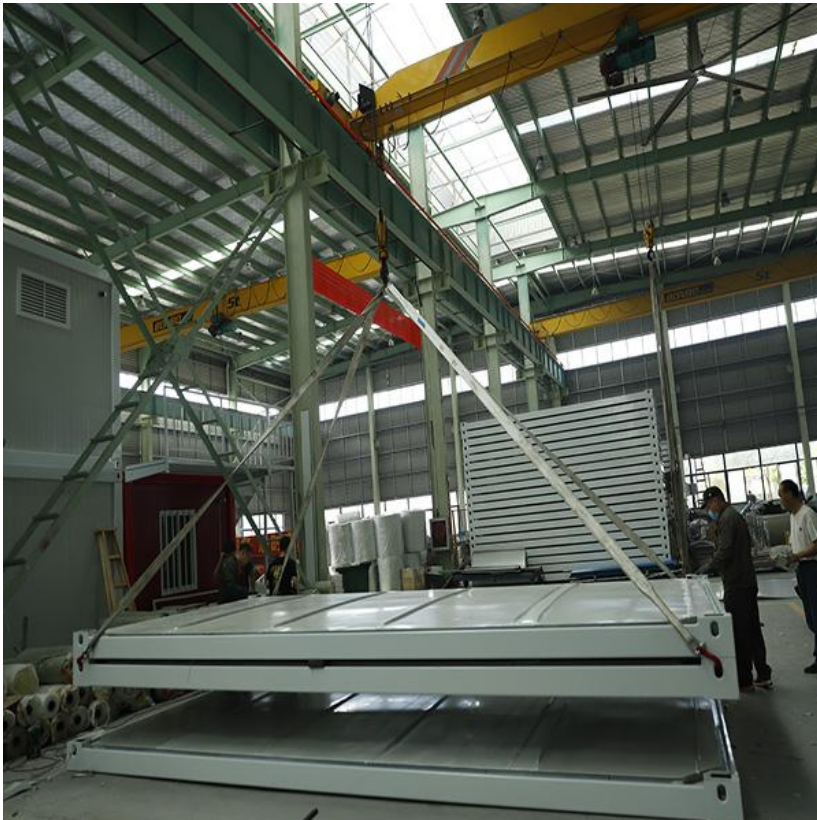
Whether it's used as temporary housing, emergency shelters, or mobile offices, our Fireproof Portable Integrated Living Container offers a versatile solution for various applications.

Standard Package Container House Datasheet		
Product Specification: 2.99-meter standard container	Length(mm)	6055(5840)
	Width(mm)	2990(2780)
	Height(mm)	2896(2550)
	Roof	organized drainage
	Number of floors	≤3
Design parameters	Service life	8-10 years
	Container weight	≤1.96T
	Ground live load	1.8KN/
	Roof live load	1.0KN/
	Wind load	0.8KN/
	Seismic degree	8
Structural	corner column	Galvanized cold rolled section steel, t=2.5mm, H2450X4 pcs material Q235B
	roof main beam	Galvanized cold rolled section steel, t=2.5mm, L5630X2pcs /L2690X2pcs material Q235B
	roof sub-beam	Galvanized square steel, t=1.8mm40*60X6 square tubes, radian t=1.8mm 15*30X3pcs square tube material Q235B
	floor main beam	Galvanized cold rolled section steel, t=2.5mm, L5630X2pcs /L2690X2pcs, material Q235B
	floor sub-beam	Galvanized square steel t=1.2mm, sub-beam X9pcs square tube material Q235B
	Angle piece hanging head	4.2mm steel galvanized stamping welding built-in bucket Angle piece X8
	Paint	Graphene Powder spraying (Electrostatic spraying)
Roof	Roof panel	0.5mm thick color steel plate 360 degree bite, color white gray
	Thermal insulation	100mm glass thermal insulation foam
	Ceiling plate	0.38 thick 831 ceiling
	downpipe	Four corners of downpipe 50PVC pipe X4pcs
Floor	Base	18mm thick fiber cement pressure plate, density ≥0.8g/cm³
Wall	Thickness	50mm thick color steel rock wool sandwich board; The outer and inner plates are made of 0.35mm galvanized color steel plate
	Heat preservation	75mm thick rock wool, bulk weight ≥90kg/m³, combustion performance is class A non-combustible
	Color	white gray PE coating
Door	Spec(mm)	Width X height =840*2035 high-end door
	Material	Steel door with paint
Window	Spec(mm)	Front window: width X height =1150*1100; width X height =1150*1100; (Standard) Hollow window anti-theft integrated window
	Frame	Plastic-steel

Glass

Ordinary 4+9+4 hollow

These features describe the key advantages and functionalities of our Fireproof Portable Integrated Living Container, providing a flexible and reliable solution for various scenarios.





Suzhou Stars Integrated Housing Co., Ltd.



+8615228076365



sales@szstarhouse.com



prefabricated-containerhouses.com

NO.1 ZHUJIABANG VILLIAGE.ZHENZE TOWN,WUJANG,SUZHOU,CHINA